

Changed Nov 15, 2024 11:10

Reviewed Nov 15, 2024 11:10

Erudus ID c898d5d90f684bbcbb425a31ed623855

Version 2.0

Status Published

11016

# GLXY RPL 36x30g GB IE

Galaxy Ripple Chocolate Bar 30g 36x0.03kg

## PRODUCT DESCRIPTION

Confectionery Bar

Brand	<a href="#">Mars</a>
Manufacturer Product Code	457542
Product Type	Food
Product Category	Confectionery
Storage Type	Ambient
Erudus ID	c898d5d90f684bbcbb425a31ed623855
Specification Type	Generic

Inner Component GTIN	5000159553834
Outer Case GTIN	05000159553841



## INGREDIENTS

### Ingredient Declaration

Sugar, Skimmed MILK Powder, Cocoa Butter, Cocoa Mass, Whey Permeate (MILK), Palm Fat, MILK Fat, Emulsifiers (SOYA Lecithin, E476),

### Ingredient Statements

Milk Chocolate contains Milk Solids 14% minimum and Cocoa Solids 25% minimum. Milk Chocolate contains vegetable fats in addition to cocoa butter.

## ALLERGENS

*Product Contains:*

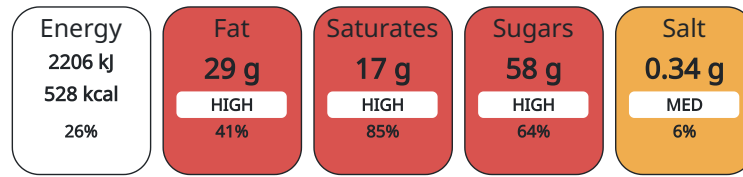
Celery/Celeriac	No	Mustard	No
Cereals Containing Gluten	No	Nuts (Tree)	No
Barley	No	Almond nuts	No
Oats	No	Brazil nuts	No
Rye	No	Cashew nuts	No
Wheat (including Spelt and Khorasan)	No	Hazelnuts	No
Crustacea	No	Macadamia (Queensland) nuts	No
Eggs	No	Pecan nuts	No
Fish	No	Pistachio nuts	No
Lupin	No	Walnuts	No
Milk	Yes	Peanuts	No
Molluscs	No	Sesame Seeds	No
		Soybeans	Yes
		Sulphur Dioxide and Sulphites	No

SUPPLEMENTARY  
INGREDIENT  
INFORMATION  
ADDITIVES

**GM Protein/DNA** No

*Product Contains:*

Each 100g/ml portion contains:



of your reference intake.

Typical values per 100g/ml : Energy 528kcal / 2206kJ

Nutrient	per 100g	RI per 100g
Energy (kJ)	2206 kJ	26%
Energy (kcal)	528 kcal	26%
Fat	29 g	41%
of which Saturates	17 g	85%
Carbohydrate	58 g	22%
of which Sugars	58 g	64%
Protein	7.5 g	15%
Salt	0.34 g	6%

HANDLING &  
STORAGE  
INFORMATION

**Directions For Use**

Ready to eat

**Storage Instructions**

Keep cool and dry

**Shelf Life from Time of Production** 364 Days

ORIGIN

**Product Country of Origin** United Kingdom

**Origin of the Primary Ingredient**

PRODUCT  
CHARACTERISTICS  
CONFIGURATION

Standards Testing

Case Configuration

Inner Pack Configuration

**Total Quantity of Inner Components in** 36 Units

**Outer Case**

PRODUCT  
WEIGHTS

Inner Component

**Variable Weight Consumer Item** No

**Inner Component Weight** 0.03 kg

Outer Case

**Outer Case Gross Weight** 1.33 kg

**Outer Case Net Weight** 1.08 kg

PRODUCT DIMENSIONS

Inner Component	
<b>Inner Component Depth</b>	0 mm
<b>Inner Component Width</b>	0 mm
<b>Inner Component Height</b>	0 mm
Outer Case	
<b>Outer Case Depth</b>	157 mm
<b>Outer Case Width</b>	198 mm
<b>Outer Case Height</b>	113 mm

PALLET INFORMATION

<b>Quantity of Cases Per Pallet Layer</b>	37 Cases	<b>Pallet Height</b>	1.52 MTR
<b>Quantity of Layers Per Pallet</b>	12 Layers	<b>Pallet Gross Weight</b>	619.19 kg
<b>Quantity of Cases Per Pallet</b>	444 Cases		

OTHER INFORMATION CONTACT INFORMATION

**Address**

Mars  
3d Dundee Road  
SL1 4LG  
Slough  
United Kingdom

adrian.holdstock@effem.com

**Technical**

Sharon Day  
sharon.day@effem.com

The information on the [Erudus System](#) has been supplied by the manufacturers of the products and, whilst the owners of the Erudus System take steps to ensure the information is regularly updated, they give no warranty and no guarantee that the information is accurate. Product information and ingredients may change, please always read product labels carefully in addition to using the information provided by Erudus.

We do not accept liability for any inaccuracies or incorrect information contained on this site.  
Please visit <http://www.erudus.com/terms-and-conditions> for full terms and conditions.