

Changed Nov 15, 2024 11:11

Reviewed Nov 15, 2024 11:11

Erudus ID 4836235ab2c541cf827afbe90a277038

Version 2.0

Status Published

15543

# MW std 56x21.5g Everst GB IE

Milky Way Chocolate Bar 21.5g 56x0.02kg

## PRODUCT DESCRIPTION

Confectionery Bar

|                           |                                  |
|---------------------------|----------------------------------|
| Brand                     | <a href="#">Mars</a>             |
| Manufacturer Product Code | 452909                           |
| Product Type              | Food                             |
| Product Category          | Confectionery                    |
| Storage Type              | Ambient                          |
| Erudus ID                 | 4836235ab2c541cf827afbe90a277038 |
| Specification Type        | Generic                          |

|                      |               |
|----------------------|---------------|
| Inner Component GTIN | 5000159550567 |
| Outer Case GTIN      | 5000159550574 |



## INGREDIENTS

### Ingredient Declaration

Sugar, Glucose Syrup, Skimmed MILK Powder, Cocoa Butter, Cocoa Mass, Sunflower Oil, Palm Fat, Whey Permeate (MILK), MILK Fat, BARLEY Malt Extract, Salt, Emulsifier (SOYA Lecithin), EGG White Powder, Milk Chocolate contains Milk Solids 14% minimum, Milk Chocolate contains Vegetable Fats in addition to Cocoa Butter

### Ingredient Statements

Milk Chocolate contains Milk Solids 14% minimum. Milk Chocolate contains vegetable fats in addition to coca butter.

## ALLERGENS

Product Contains:

|                                      |     |                               |             |
|--------------------------------------|-----|-------------------------------|-------------|
| Celery/Celery                        | No  | Mustard                       | No          |
| Cereals Containing Gluten            | Yes | Nuts (Tree)                   | May Contain |
| Barley                               | Yes | Almond nuts                   | May Contain |
| Oats                                 | No  | Brazil nuts                   | May Contain |
| Rye                                  | No  | Cashew nuts                   | May Contain |
| Wheat (including Spelt and Khorasan) | No  | Hazelnuts                     | May Contain |
| Crustacea                            | No  | Macadamia (Queensland) nuts   | May Contain |
| Eggs                                 | Yes | Pecan nuts                    | May Contain |
| Fish                                 | No  | Pistachio nuts                | May Contain |
| Lupin                                | No  | Walnuts                       | May Contain |
| Milk                                 | Yes | Peanuts                       | May Contain |
| Molluscs                             | No  | Sesame Seeds                  | No          |
|                                      |     | Soybeans                      | Yes         |
|                                      |     | Sulphur Dioxide and Sulphites | No          |

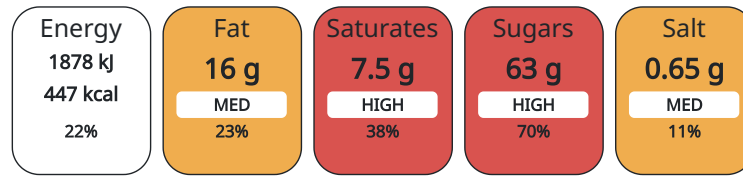
Risk Source:

SUPPLEMENTARY  
INGREDIENT  
INFORMATION  
ADDITIVES

**GM Protein/DNA** No

*Product Contains:*

Each 100g/ml portion contains:



of your reference intake.

Typical values per 100g/ml : Energy 447kcal / 1878kJ

| Nutrient           | per 100g | RI per 100g |
|--------------------|----------|-------------|
| Energy (kJ)        | 1878 kJ  | 22%         |
| Energy (kcal)      | 447 kcal | 22%         |
| Fat                | 16 g     | 23%         |
| of which Saturates | 7.5 g    | 38%         |
| Carbohydrate       | 71 g     | 27%         |
| of which Sugars    | 63 g     | 70%         |
| Protein            | 3.8 g    | 8%          |
| Salt               | 0.65 g   | 11%         |

HANDLING &  
STORAGE  
INFORMATION

**Directions For Use**

Ready to eat

**Storage Instructions**

Keep cool and dry

**Shelf Life from Time of Production** 364 Days

ORIGIN

**Product Country of Origin** United Kingdom

**Origin of the Primary Ingredient**

PRODUCT  
CHARACTERISTICS  
CONFIGURATION

Standards Testing

Case Configuration

Inner Pack Configuration

**Total Quantity of Inner Components in** 56 Units

**Outer Case**

PRODUCT  
WEIGHTS

Inner Component

**Variable Weight Consumer Item** No

**Inner Component Weight** 0.02 kg

Outer Case

**Outer Case Gross Weight** 1.34 kg

**Outer Case Net Weight** 1.2 kg

PRODUCT DIMENSIONS

|                        |        |
|------------------------|--------|
| Inner Component        |        |
| Inner Component Depth  | 0 mm   |
| Inner Component Width  | 0 mm   |
| Inner Component Height | 0 mm   |
| Outer Case             |        |
| Outer Case Depth       | 224 mm |
| Outer Case Width       | 200 mm |
| Outer Case Height      | 84 mm  |

PALLET INFORMATION

|                                    |           |                     |           |
|------------------------------------|-----------|---------------------|-----------|
| Quantity of Cases Per Pallet Layer | 20 Cases  | Pallet Height       | 1.67 MTR  |
| Quantity of Layers Per Pallet      | 18 Layers | Pallet Gross Weight | 511.32 kg |
| Quantity of Cases Per Pallet       | 360 Cases |                     |           |

OTHER INFORMATION CONTACT INFORMATION

**Address**

Mars  
3d Dundee Road  
SL1 4LG  
Slough  
United Kingdom

adrian.holdstock@effem.com

**Technical**

Sharon Day  
sharon.day@effem.com

The information on the [Erudus System](#) has been supplied by the manufacturers of the products and, whilst the owners of the Erudus System take steps to ensure the information is regularly updated, they give no warranty and no guarantee that the information is accurate. Product information and ingredients may change, please always read product labels carefully in addition to using the information provided by Erudus.

We do not accept liability for any inaccuracies or incorrect information contained on this site.  
Please visit <http://www.erudus.com/terms-and-conditions> for full terms and conditions.