

Changed May 28, 2025 07:30

Reviewed May 28, 2025 07:30

Erudus ID 11e51197ede14d7fb93baaf653adb83a

Version 1.0

Status Published

12207

Fanta Pear 330ml X24 Can

Fanta Pear 24x0.33kg

PRODUCT DESCRIPTION

Fanta Pear 330ml x24 CAN

Brand	Coca-Cola
Manufacturer Product Code	644620
Product Type	Drink
Product Category	Drinks - General
Storage Type	Ambient
Erudus ID	11e51197ede14d7fb93baaf653adb83a
Specification Type	Drinks

Inner Component GTIN	05449000342263
Outer Case GTIN	05017726450724
Pallet GTIN	05017726350727



INGREDIENTS

Ingredient Declaration

Ingredients: Carbonated Water, Sugar, Pear Juice From Concentrate (3%), Acids (Citric Acid, Malic Acid), Stabilisers (Acacia Gum, Glycerol Esters Of Wood Rosins), Acidity Regulator (Sodium Gluconate), Antioxidant (Ascorbic Acid), Preservative (Potassium Sorbate), Sweeteners (Cyclamates, Acesulfame K, Sucralose), Flavourings, Colours (E 150d, Lutein).

ALLERGENS

Product Contains:

Celery/Celeriac	No	Mustard	No
Cereals Containing Gluten	No	Nuts (Tree)	No
Barley	No	Almond nuts	No
Oats	No	Brazil nuts	No
Rye	No	Cashew nuts	No
Wheat (including Spelt and Khorasan)	No	Hazelnuts	No
Crustacea	No	Macadamia (Queensland) nuts	No
Eggs	No	Pecan nuts	No
Fish	No	Pistachio nuts	No
Lupin	No	Walnuts	No
Milk	No	Peanuts	No
Molluscs	No	Sesame Seeds	No
		Soybeans	No
		Sulphur Dioxide and Sulphites	No

SUPPLEMENTARY
INGREDIENT
INFORMATION

Palm Oil	No
Hydrogenated Vegetable Oil/Fat	No
GM Protein/DNA	No

ADDITIVES

Product Contains:

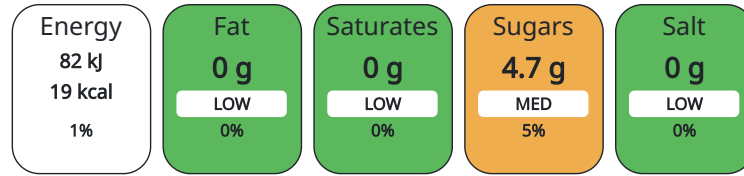
Artificial Antioxidants	No	Artificial Flavourings	No
Artificial Colours	Yes	Artificial Preservatives	Yes
Artificial Flavour Enhancers	No	Artificial Sweeteners	Yes

DIET SUITABILITY

Vegan Diet	Suitable for	Vegetarian Diet	Suitable for
-------------------	--------------	------------------------	--------------

NUTRITIONAL
INFORMATION AS
SOLD

Each 100g/ml portion contains:



of your reference intake.

Typical values per 100g/ml : Energy 19kcal / 82kj

Nutrient	per 100ml	RI per 100ml	per 100ml serving	RI per 100ml serving
Energy (kJ)	82 kJ	1%	82	1%
Energy (kcal)	19 kcal	1%	19	1%
Fat	0 g		0 g	
of which Saturates	0 g		0 g	
Carbohydrate	4.7 g	2%	4.7 g	2%
of which Sugars	4.7 g	5%	4.7 g	5%
Protein	0 g		0 g	
Salt	0 g		0 g	

Serving Size	100 ml
---------------------	--------

HFSS (HIGH IN
FAT, SALT AND
SUGAR)

HFSS Status	Yes
HFSS Score	1

HANDLING &
STORAGE
INFORMATION

Directions For Use
Best served chilled.

Storage Instructions
Store on a cool dry place.

Shelf Life from Time of Production	360 Days
---	----------

ORIGIN

Product Country of Origin	Great Britain
Origin of the Primary Ingredient	Great Britain

PRODUCT
CHARACTERISTICS
CONFIGURATION

Standards Testing

Case Configuration	Inner Pack Configuration
Total Quantity of Inner Components in Outer Case	24 Units
Is the Outer Case Splittable?	No

PRODUCT WEIGHTS

Inner Component	
Inner Component Weight	0.33 kg
Outer Case	
Outer Case Gross Weight	8.42 kg
Outer Case Net Weight	8.05 kg

PRODUCT DIMENSIONS

Inner Component	
Inner Component Depth	66.5 mm
Inner Component Width	66.5 mm
Inner Component Height	115.5 mm
Outer Case	
Outer Case Depth	404 mm
Outer Case Width	118 mm
Outer Case Height	271 mm


PALLET INFORMATION

Quantity of Cases Per Pallet Layer	10 Cases	Pallet Height	1.56 MTR
Quantity of Layers Per Pallet	12 Layers	Pallet Gross Weight	1040.23 kg
Quantity of Cases Per Pallet	120 Cases		

PACKAGING

Inner Component Packaging						
Type	Materials	Weight	Recycled Material %	Recyclable	Returnable	Composite
Can	Aluminium	285.6 g				
Outer Case Packaging						
Type	Materials	Weight	Recycled Material %	Recyclable	Returnable	Composite
Case	Paper/Cardboard	59.63 g				
Case	Plastic	16.977 g				

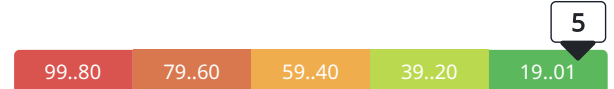
ENVIRONMENT IMPACT


 **Industry Average**
This impact score is based on an Industry Average for this product type.

Impact per kg 

Carbon CO ₂ eq. per kg	0.42 kg	Water Use L eq. per kg	2.1 kl
Eutrophication PO ₄ ³⁻ eq. per kg	16.8 g	Land Use m ² *yr per kg	0.35 m ² *yr
Biodiversity SLI per kg	0.28 SLI		

Carbon Intensity Score 



Data Quality Score 



CONTACT INFORMATION

Address
Coca-Cola
Coca-Cola Europacific Partners Great Britain Limited
Pemberton House, Bakers Road
UB8 1EZ
Uxbridge
United Kingdom

contact@ccep.com
0808100000

Technical
Data Queries
npidataexchange@ccep.com

The information on the [Erudus System](#) has been supplied by the manufacturers of the products and, whilst the owners of the Erudus System take steps to ensure the information is regularly updated, they give no warranty and no guarantee that the information is accurate. Product information and ingredients may change, please always read product labels carefully in addition to using the information provided by Erudus.

We do not accept liability for any inaccuracies or incorrect information contained on this site.
Please visit <http://www.erudus.com/terms-and-conditions> for full terms and conditions.