

Changed Mar 07, 2025 11:55

Reviewed Mar 07, 2025 11:55

Erudus ID 0f0592bcceac4286b905962cfe0f1cd8

Version 2.0

Status Published

12467

Lucozade Sport Orange 6x 4 x 500ml

Lucozade Sport Orange 24x

PRODUCT DESCRIPTION

Unlock your body's potential with Lucozade Sport. Your performance partner for sports and exercise.

Brand	Lucozade Ribena Suntory Limited
Manufacturer Product Code	F40045
Product Type	Drink
Product Category	Juices and Cordials
Storage Type	Ambient
Erudus ID	0f0592bcceac4286b905962cfe0f1cd8
Specification Type	Drinks

Inner Component GTIN	5054267000452
Outer Case GTIN	05054267400450



INGREDIENTS

Ingredient Declaration

Water, Glucose Syrup, Acid (Citric Acid), Acidity Regulator (Sodium Citrate), Preservative (Potassium Sorbate), Stabiliser (Acacia Gum), Antioxidant (Ascorbic Acid), Sweeteners (Aspartame, Acesulfame K), Flavouring, Niacin (Vitamin B3), Colour (Beta Carotene). Contains a source of Phenylalanine.

ALLERGENS

Product Contains:

Celery/Celeriac	No	Mustard	No
Cereals Containing Gluten	No	Nuts (Tree)	No
Barley	No	Almond nuts	No
Oats	No	Brazil nuts	No
Rye	No	Cashew nuts	No
Wheat (including Spelt and Khorasan)	No	Hazelnuts	No
Crustacea	No	Macadamia (Queensland) nuts	No
Eggs	No	Pecan nuts	No
Fish	No	Pistachio nuts	No
Lupin	No	Walnuts	No
Milk	No	Peanuts	No
Molluscs	No	Sesame Seeds	No
		Soybeans	No
		Sulphur Dioxide and Sulphites	No

SUPPLEMENTARY
INGREDIENT
INFORMATION

Palm Oil	No
Hydrogenated Vegetable Oil/Fat	No
GM Protein/DNA	No

ADDITIVES

Product Contains:

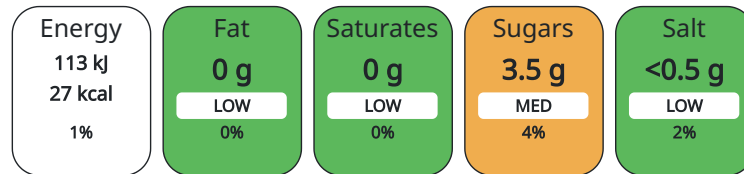
Artificial Antioxidants	No	Artificial Flavourings	Yes
Artificial Colours	No	Artificial Preservatives	Yes
Artificial Flavour Enhancers	No	Artificial Sweeteners	Yes

DIET SUITABILITY

Vegan Diet	Suitable for	Vegetarian Diet	Suitable for
Halal Diet	No	Kosher Diet	No

NUTRITIONAL
INFORMATION AS
SOLD

Each 100g/ml portion contains:



of your reference intake.

Typical values per 100g/ml : Energy 27kcal / 113kJ

Nutrient	per 100g	RI per 100g	per 500g serving	RI per 500g serving
Energy (kJ)	113 kJ	1%	565	7%
Energy (kcal)	27 kcal	1%	135	7%
Fat	0 g		0 g	
of which Saturates	0 g		0 g	
Carbohydrate	6.3 g	2%	31.5 g	12%
of which Sugars	3.5 g	4%	17.5 g	19%
Protein	< 0.5 g	1%	2.5 g	5%
Salt	0.12 g	2%	0.6 g	10%
Sodium	< 5 mg		25 mg	

Serving Size 500 g

HFSS (HIGH IN
FAT, SALT AND
SUGAR)
HANDLING &
STORAGE
INFORMATION

HFSS Status No

Directions For Use

Drink this if you're an adult who trains or takes part in sport. It's best when you're eating properly and staying healthy.

Storage Instructions

Once opened refrigerate. Consume within 4 days. Find the Best Before End date on the cap or top of this pack.

Shelf Life from Time of Production 180 Days

ORIGIN

Product Country of Origin United Kingdom

Additional Origin Details

As above

Origin of the Primary Ingredient

PRODUCT
CHARACTERISTICS

Standards Testing			
Do you undertake trend analysis of microbiological results?	No	Is shelf life testing undertaken?	No

CONFIGURATION	Case Configuration	Inner Pack Configuration					
CONFIGURATION	Total Quantity of Inner Components in Outer Case	24 Units					
	Is the Outer Case Splittable?	Yes					
	PRODUCT WEIGHTS						
PRODUCT WEIGHTS	Inner Component						
	Outer Case						
	Outer Case Gross Weight	13.19 kg					
	Outer Case Net Weight	12.34 kg					
PRODUCT DIMENSIONS	PRODUCT DIMENSIONS						
	Inner Component						
	Inner Component Depth	66 mm					
	Inner Component Width	66 mm					
	Inner Component Height	228 mm					
	Outer Case						
	Outer Case Depth	397 mm					
	Outer Case Width	265 mm					
PALLETT INFORMATION	Outer Case Height	232 mm					
	Quantity of Cases Per Pallet Layer	10 Cases	Pallet Height	1.6 MTR			
	Quantity of Layers Per Pallet	6 Layers	Pallet Gross Weight	819.22 kg			
	Quantity of Cases Per Pallet	60 Cases					
PACKAGING	Inner Component Packaging						
	Type	Materials	Weight	Recycled Material %	Recyclable	Returnable	Composite
	Bottle	Plastic	34.3 g				
	Bottle	Paper/Cardboard	0.7 g				
	Outer Case Packaging						
	Type	Materials	Weight	Recycled Material %	Recyclable	Returnable	Composite
	Case	Plastic	34.3 g				
	Case	Paper/Cardboard	0.7 g				
	CONTACT INFORMATION	Address					
		Lucozade Ribena Suntory Limited					
Building 1							
ARC							
UB8 1DH							
Uxbridge England							
sales.operations@suntory.com							
07785 432833							

The information on the [Erudus System](#) has been supplied by the manufacturers of the products and, whilst the owners of the Erudus System take steps to ensure the information is regularly updated, they give no warranty and no guarantee that the information is accurate. Product information and ingredients may change, please always read product labels carefully in addition to using the information provided by Erudus.

We do not accept liability for any inaccuracies or incorrect information contained on this site.
Please visit <http://www.erudus.com/terms-and-conditions> for full terms and conditions.