

Changed Nov 15, 2024 11:20

Reviewed Nov 15, 2024 11:20

Erudus ID e3c6785e8530439aad70ae20d2759348

Version 2.0

Status Published

11053

MALT TSR 24x35g Sngl ES GB IE

Maltesers Teasers Single 35g 24x0.04kg

PRODUCT DESCRIPTION

Block Chocolate

Brand	Mars
Manufacturer Product Code	282342
Product Type	Food
Product Category	Confectionery
Storage Type	Ambient
Erudus ID	e3c6785e8530439aad70ae20d2759348
Specification Type	Generic

Inner Component GTIN 5000159462129

Outer Case GTIN 5000159462136



INGREDIENTS

Ingredient Declaration

Sugar, Cocoa Butter, Skimmed MILK Powder, Cocoa Mass, Whey Permeate (MILK), Glucose Syrup, Palm Fat, BARLEY Malt Extract, MILK Fat, Emulsifier (SOYA Lecithin), WHEAT Flour, Raising Agents (E341, E500), Potassium Carbonates, WHEAT Gluten, Sweet Whey Powder (MILK), Salt, Milk Chocolate contains Milk Solids 14% minimum and Cocoa Solids 25% minimum., Milk Chocolate contains Vegetable Fats in addition to Cocoa Butter

Ingredient Statements

Milk Chocolate contains Milk Solids 14% minimum and Cocoa Solids 25% minimum. Milk Chocolate contains vegetable fats in addition to cocoa butter.

ALLERGENS

Product Contains:

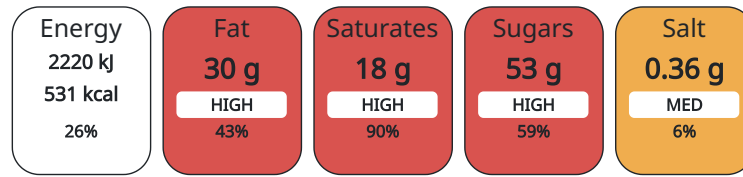
Celery/Celeriac	No	Mustard	No
Cereals Containing Gluten	Yes	Nuts (Tree)	No
Barley	Yes	Almond nuts	No
Oats	No	Brazil nuts	No
Rye	No	Cashew nuts	No
Wheat (including Spelt and Khorasan)	Yes	Hazelnuts	No
Crustacea	No	Macadamia (Queensland) nuts	No
Eggs	No	Pecan nuts	No
Fish	No	Pistachio nuts	No
Lupin	No	Walnuts	No
Milk	Yes	Peanuts	No
Molluscs	No	Sesame Seeds	No
		Soybeans	Yes
		Sulphur Dioxide and Sulphites	No

SUPPLEMENTARY
INGREDIENT
INFORMATION
ADDITIVES

GM Protein/DNA No

Product Contains:

Each 100g/ml portion contains:



of your reference intake.

Typical values per 100g/ml : Energy 531kcal / 2220kJ

Nutrient	per 100g	RI per 100g
Energy (kJ)	2220 kJ	26%
Energy (kcal)	531 kcal	27%
Fat	30 g	43%
of which Saturates	18 g	90%
Carbohydrate	57 g	22%
of which Sugars	53 g	59%
Protein	7.7 g	15%
Salt	0.36 g	6%

HANDLING &
STORAGE
INFORMATION

Directions For Use

Ready to eat

Storage Instructions

Keep cool and dry

Shelf Life from Time of Production 364 Days

ORIGIN

Product Country of Origin United Kingdom

Origin of the Primary Ingredient

PRODUCT
CHARACTERISTICS
CONFIGURATION

Standards Testing

Case Configuration

Inner Pack Configuration

Total Quantity of Inner Components in 24 Units

Outer Case

PRODUCT
WEIGHTS

Inner Component

Variable Weight Consumer Item No

Inner Component Weight 0.04 kg

Outer Case

Outer Case Gross Weight 0.97 kg

Outer Case Net Weight 0.84 kg

PRODUCT DIMENSIONS

Inner Component	
Inner Component Depth	0 mm
Inner Component Width	0 mm
Inner Component Height	0 mm
Outer Case	
Outer Case Depth	201 mm
Outer Case Width	150 mm
Outer Case Height	87 mm

PALLET INFORMATION

Quantity of Cases Per Pallet Layer	36 Cases	Pallet Height	1.64 MTR
Quantity of Layers Per Pallet	17 Layers	Pallet Gross Weight	625.48 kg
Quantity of Cases Per Pallet	612 Cases		

OTHER INFORMATION CONTACT INFORMATION

Address

Mars
3d Dundee Road
SL1 4LG
Slough
United Kingdom

adrian.holdstock@effem.com

Technical

Sharon Day
sharon.day@effem.com

The information on the [Erudus System](#) has been supplied by the manufacturers of the products and, whilst the owners of the Erudus System take steps to ensure the information is regularly updated, they give no warranty and no guarantee that the information is accurate. Product information and ingredients may change, please always read product labels carefully in addition to using the information provided by Erudus.

We do not accept liability for any inaccuracies or incorrect information contained on this site.
Please visit <http://www.erudus.com/terms-and-conditions> for full terms and conditions.