

Changed Feb 04, 2025 13:22

Reviewed Feb 04, 2025 13:22

Erudus ID e017530fc87a4f86b30c647b9c4446e3

Version 1.1

Status Published

12318

Squashies Love Hearts 12 x 120g

Squashies Love Hearts 12x120g

PRODUCT DESCRIPTION

Squashies Love Hearts

Brand	Swizzels Matlow Limited
Manufacturer Product Code	92666
Product Type	Food
Product Category	Confectionery
Storage Type	Ambient
Erudus ID	e017530fc87a4f86b30c647b9c4446e3
Specification Type	Generic



Inner Component GTIN	5010478585577
Outer Case GTIN	05010478567412

INGREDIENTS

Ingredient Declaration

Glucose Syrup, Sugar, Gelling Agent: Gelatine; Modified Starch, Acidity Regulators: Citric Acid, Trisodium Citrate; Flavourings, Pectin, Glazing Agent: Carnaubawax; Colours: Anthocyanin, Copper Chlorophyllin, Curcumin, Lutein, Paprika Extract.

ALLERGENS

Product Contains:

Celery/Celeryiac	No	Mustard	No
Cereals Containing Gluten	No	Nuts (Tree)	No
Barley	No	Almond nuts	No
Oats	No	Brazil nuts	No
Rye	No	Cashew nuts	No
Wheat (including Spelt and Khorasan)	No	Hazelnuts	No
Crustacea	No	Macadamia (Queensland) nuts	No
Eggs	No	Pecan nuts	No
Fish	No	Pistachio nuts	No
Lupin	No	Walnuts	No
Milk	No	Peanuts	No
Molluscs	No	Sesame Seeds	No
		Soybeans	No
		Sulphur Dioxide and Sulphites	No

SUPPLEMENTARY INGREDIENT INFORMATION

GM Protein/DNA	No
----------------	----

ADDITIVES

Product Contains:

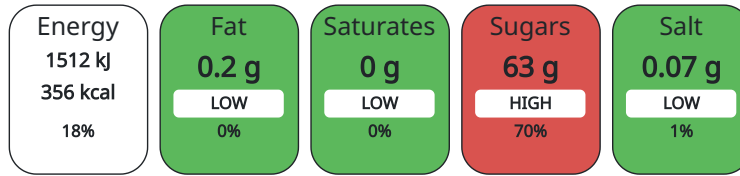
Artificial Antioxidants	No	Artificial Flavourings	Yes
Artificial Colours	No	Artificial Preservatives	No
Artificial Flavour Enhancers	No	Artificial Sweeteners	No

DIET SUITABILITY

Vegan Diet	No	Vegetarian Diet	No
Halal Diet	No	Kosher Diet	No

NUTRITIONAL INFORMATION AS SOLD

Each 100g/ml portion contains:



of your reference intake.

Typical values per 100g/ml : Energy 356kcal / 1512kJ

Nutrient	per 100g	RI per 100g
Energy (kJ)	1512 kJ	18%
Energy (kcal)	356 kcal	18%
Fat	0.2 g	0%
of which Saturates	0 g	
Carbohydrate	84 g	32%
of which Sugars	63 g	70%
Protein	3.4 g	7%
Salt	0.07 g	1%

HANDLING & STORAGE INFORMATION

Directions For Use

N/A

Storage Instructions

Store in a cool dark place.

Shelf Life from Time of Production 548 Days

ACCREDITATIONS/ CERTIFICATIONS/ ASSURANCE SCHEMES ORIGIN

FSSC 22000

ISO 9001:2015 (Quality Management Systems)

Product Country of Origin United Kingdom

Origin of the Primary Ingredient

PRODUCT CHARACTERISTICS CONFIGURATION

Standards Testing

Case Configuration

Inner Pack Configuration

Total Quantity of Inner Components in 12 Units

Outer Case

Is the Outer Case Splittable? Yes

PRODUCT WEIGHTS

Inner Component

Variable Weight Consumer Item No

Inner Component Weight 120 g

Outer Case

Outer Case Gross Weight 1.58 kg

Outer Case Net Weight 1.44 kg

PRODUCT DIMENSIONS

Inner Component	
Inner Component Depth	30 mm
Inner Component Width	150 mm
Inner Component Height	185 mm
Outer Case	
Outer Case Depth	220 mm
Outer Case Width	150 mm
Outer Case Height	187 mm

PALLET INFORMATION

Quantity of Cases Per Pallet Layer	34 Cases	Pallet Height	1.68 MTR
Quantity of Layers Per Pallet	8 Layers	Pallet Gross Weight	445 kg
Quantity of Cases Per Pallet	272 Cases		

PACKAGING

Inner Component Packaging						
Type	Materials	Weight	Recycled Material %	Recyclable	Returnable	Composite
Bag	Plastic / OPP (Oriented Polypropylene)	2.121 g				
Outer Case Packaging						
Type	Materials	Weight	Recycled Material %	Recyclable	Returnable	Composite
Case	Paper/Cardboard / Corrugated	91 g				
Transport Packaging						
Type	Materials	Weight	Recycled Material %	Recyclable	Returnable	Composite
Layer Card	Paper/Cardboard	378 g				
Pallet Wrap	Plastic / LDPE (Low Density Polyethylene)	125 g				

OTHER INFORMATION

Commodity Code	1704906500
Meursing Code	7012

CONTACT INFORMATION

Address	Commercial
Swizzels Matlow Limited	Marie Kirkham
Carlton House	marie.kirkham@swizzels-matlow.com
Albion Road	0800 970 0480
SK22 3HA	PA to the Sales Team
New Mills, High Peak	Complaints
Derbyshire	customer.support@swizzels-matlow.com
United Kingdom	0800 970 0480
ben.cooper@swizzels-matlow.com	
0800 970 0480	

The information on the [Erudus System](#) has been supplied by the manufacturers of the products and, whilst the owners of the Erudus System take steps to ensure the information is regularly updated, they give no warranty and no guarantee that the information is accurate. Product information and ingredients may change, please always read product labels carefully in addition to using the information provided by Erudus.

We do not accept liability for any inaccuracies or incorrect information contained on this site. Please visit <http://www.erudus.com/terms-and-conditions> for full terms and conditions.