

Changed Feb 20, 2025 15:11

Reviewed Feb 20, 2025 15:11

Erudus ID a4995996462149d5bc53566a654c4728

Version 2.0

Status Published

39611

Lakeland Dairies Semi-Skimmed Milk 12x1LT

Lakeland Dairies Semi-skimmed Milk 12x1lt

PRODUCT DESCRIPTION

Long life semi-skimmed milk

Brand	Lakeland Dairies Newtownards
Manufacturer Product Code	40000333
Product Type	Drink
Product Category	Milk - Cow's
Storage Type	Ambient
Erudus ID	a4995996462149d5bc53566a654c4728
Specification Type	Dairy



Inner Component GTIN	5010652988194
Outer Case GTIN	05010652610613



INGREDIENTS

Ingredient Declaration

Semi-Skimmed MILK

ALLERGENS

Product Contains:

Celery/Celeriac	No	Mustard	No
Cereals Containing Gluten	No	Nuts (Tree)	No
Barley	No	Almond nuts	No
Oats	No	Brazil nuts	No
Rye	No	Cashew nuts	No
Wheat (including Spelt and Khorasan)	No	Hazelnuts	No
Crustacea	No	Macadamia (Queensland) nuts	No
Eggs	No	Pecan nuts	No
Fish	No	Pistachio nuts	No
Lupin	No	Walnuts	No
Milk	Yes	Peanuts	No
Molluscs	No	Sesame Seeds	No
		Soybeans	No
		Sulphur Dioxide and Sulphites	No

SUPPLEMENTARY
INGREDIENT
INFORMATION

Palm Oil	No	Alcoholic Strength %Vol (ABV)	0 % Vol
Hydrogenated Vegetable Oil/Fat	No		
GM Protein/DNA	No		

ADDITIVES

Product Contains:

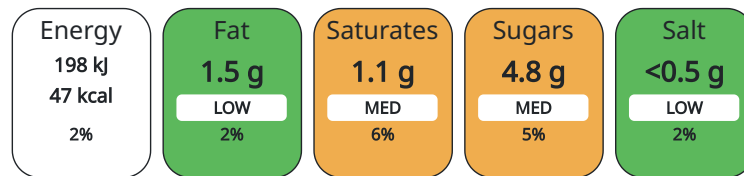
Artificial Antioxidants	No	Artificial Flavourings	No
Artificial Colours	No	Artificial Preservatives	No
Artificial Flavour Enhancers	No	Artificial Sweeteners	No

DIET SUITABILITY

Vegetarian Diet	Suitable for	Halal Diet	Certified
Kosher Diet	No		

NUTRITIONAL
INFORMATION AS
SOLD

Each 100g/ml portion contains:



of your reference intake.

Typical values per 100g/ml : Energy 47kcal / 198kj

Nutrient	per 100ml	RI per 100ml	per 100ml serving	RI per 100ml serving
Energy (kJ)	198 kJ	2%	198	2%
Energy (kcal)	47 kcal	2%	47	2%
Fat	1.5 g	2%	1.5 g	2%
of which Saturates	1.1 g	6%	1.1 g	6%
Carbohydrate	4.8 g	2%	4.8 g	2%
of which Sugars	4.8 g	5%	4.8 g	5%
Fibre	0 g		0 g	
Protein	3.4 g	7%	3.4 g	7%
Salt	0.13 g	2%	0.13 g	2%

Serving Size 100 ml

VITAMINS AND
MINERALS AS
SOLD

Nutrient	per 100ml	RI per 100ml	per 100ml serving	RI per 100ml serving
Calcium	110 mg	14%	110 mg	14%

HANDLING &
STORAGE
INFORMATION

Directions For Use

Once opened, pour from carton.

Storage Instructions

Store in a cool, dry place. Once opened, keep refrigerated and treat as fresh milk. Consume within 3 days of opening.

Shelf Life from Time of Production 212 Days

ACCREDITATIONS/
CERTIFICATIONS/
ASSURANCE
SCHEMES

BRCGS Certified	ISO 14001 (Environmental Management)
School Approved (The Requirement for School Food Regulation 2014)	

ORIGIN	Product Country of Origin		United Kingdom				
	Additional Origin Details						
	Made in the UK (Northern Ireland)						
PRODUCT CHARACTERISTICS	Origin of the Primary Ingredient						
	Standards Testing						
CONFIGURATION	Do you undertake trend analysis of microbiological results?			Yes	Is shelf life testing undertaken?		Yes
	Case Configuration			Inner Pack Configuration			
PRODUCT WEIGHTS	Total Quantity of Inner Components in Outer Case						
				12 Units			
	Inner Component						
	Variable Weight Consumer Item			Yes			
	Outer Case						
PRODUCT DIMENSIONS	Outer Case Gross Weight						
				12.94 kg			
	Outer Case Net Weight						
				12.42 kg			
	Inner Component						
	Inner Component Depth			72 mm			
	Inner Component Width			75 mm			
	Inner Component Height			206 mm			
PALLET INFORMATION	Outer Case						
	Outer Case Depth			303 mm			
	Outer Case Width			236 mm			
	Outer Case Height			216 mm			
	Quantity of Cases Per Pallet Layer			17 Cases	Pallet Height		1.23 MTR
PACKAGING	Quantity of Layers Per Pallet			4 Layers			
	Quantity of Cases Per Pallet			68 Cases			
	Inner Component Packaging						
	Type	Materials	Weight	Recycled Material %	Recyclable	Returnable	Composite
Carton	Plastic	1 g					
Carton	Paper/Cardboard	29 g					
OTHER INFORMATION	Outer Case Packaging						
	Type	Materials	Weight	Recycled Material %	Recyclable	Returnable	Composite
	Case	Paper/Cardboard	148 g				
	Intrastat/Taric Code			0401201100	Identification/Health Marks		UK(NI) NI207M
Commodity Code			04012011			EC	
CONTACT INFORMATION	Address			Commercial			
	Lakeland Dairies Newtownards Lakeland Dairies (Newtownards) Dublin Road Killygarry, Cavan Ireland			Marketing marketingadmin@pritchitts.com 020 8290 7007 Marketing Team			
	aorr@pritchitts.com +353 (0)494364200						

The information on the [Erudus System](#) has been supplied by the manufacturers of the products and, whilst the owners of the Erudus System take steps to ensure the information is regularly updated, they give no warranty and no guarantee that the information is accurate. Product information and ingredients may change, please always read product labels carefully in addition to using the information provided by Erudus.

We do not accept liability for any inaccuracies or incorrect information contained on this site.
Please visit <http://www.erudus.com/terms-and-conditions> for full terms and conditions.