

Changed Jan 21, 2026 09:17

Reviewed Jan 21, 2026 09:17

Erudus ID 96b522ef506c45589472ac0445dfb604

Version 1.0

Status Published

12161

Coca-Cola Cherry Float 330ml x24

Coca-cola Cherry Float 24x0.354kg

PRODUCT DESCRIPTION

Coca-Cola Cherry Float 330ml x24 Can

Brand	Coca-Cola
Manufacturer Product Code	645302
Product Type	Drink
Product Category	Drinks - General
Storage Type	Ambient
Erudus ID	96b522ef506c45589472ac0445dfb604
Specification Type	Drinks

Inner Component GTIN	5449000344724
Outer Case GTIN	05017726454524
Pallet GTIN	05017726354527



INGREDIENTS

Ingredient Declaration

Ingredients: Carbonated Water, Acids (Citric Acid, Tartaric Acid), Acidity Regulator (Sodium Citrates), Sweeteners (Aspartame, Acesulfame-K, Sucralose), Natural Lemon And Lime Flavourings.

ALLERGENS

Product Contains:

Celery/Celeriac	No	Mustard	No
Cereals Containing Gluten	No	Nuts (Tree)	No
Barley	No	Almond nuts	No
Oats	No	Brazil nuts	No
Rye	No	Cashew nuts	No
Wheat (including Spelt and Khorasan)	No	Hazelnuts	No
Crustacea	No	Macadamia (Queensland) nuts	No
Eggs	No	Pecan nuts	No
Fish	No	Pistachio nuts	No
Lupin	No	Walnuts	No
Milk	No	Peanuts	No
Molluscs	No	Sesame Seeds	No
		Soybeans	No
		Sulphur Dioxide and Sulphites	No

SUPPLEMENTARY
INGREDIENT
INFORMATION

Palm Oil	No
Hydrogenated Vegetable Oil/Fat	No
GM Protein/DNA	No

ADDITIVES

Product Contains:

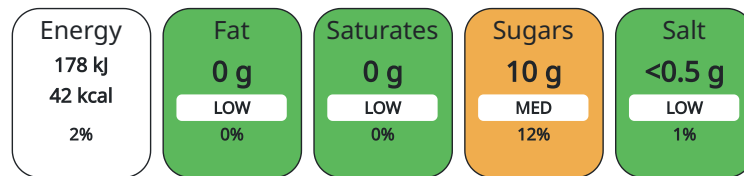
Artificial Antioxidants	No	Artificial Flavourings	No
Artificial Colours	No	Artificial Preservatives	No
Artificial Flavour Enhancers	No	Artificial Sweeteners	Yes

DIET SUITABILITY

Vegan Diet	Suitable for	Vegetarian Diet	Suitable for
Halal Diet	Suitable for	Kosher Diet	Suitable for

NUTRITIONAL
INFORMATION AS
SOLD

Each 100g/ml portion contains:



of your reference intake.

Typical values per 100g/ml : Energy 42kcal / 178kJ

Nutrient	per 100ml	RI per 100ml	per 330ml serving	RI per 330ml serving
Energy (kJ)	178 kJ	2%	587 kJ	7%
Energy (kcal)	42 kcal	2%	139 kcal	7%
Fat	0 g		0 g	
of which Saturates	0 g		0 g	
Carbohydrate	10.4 g	4%	34 g	13%
of which Sugars	10.4 g	12%	34 g	38%
Protein	0 g		0 g	
Salt	0.03 g	1%	0.1 g	2%

Serving Size	330 ml
Number of Servings	1 Servings

HFSS (HIGH IN
FAT, SALT AND
SUGAR)

HFSS Status	No
HFSS Score	0

HANDLING &
STORAGE
INFORMATION

Directions For Use
Best served chilled.

Storage Instructions
Store in a cool dry place.

Shelf Life from Time of Production	180 Days
------------------------------------	----------

ORIGIN

Product Country of Origin	Belgium
Origin of the Primary Ingredient	Not Applicable

PRODUCT
CHARACTERISTICS
CONFIGURATION

Standards Testing	
Case Configuration	Inner Pack Configuration
Total Quantity of Inner Components in Outer Case	24 Units
Is the Outer Case Splittable?	No

PRODUCT WEIGHTS

Inner Component	
Inner Component Weight	0.354 kg
Net Drained Weight	0.34 kg
Outer Case	
Outer Case Gross Weight	8.6 kg
Outer Case Net Weight	8.3 kg

PRODUCT DIMENSIONS

Inner Component	
Inner Component Depth	66.5 mm
Inner Component Width	115.5 mm
Inner Component Height	66.5 mm
Outer Case	
Outer Case Depth	404 mm
Outer Case Width	271 mm
Outer Case Height	118 mm

PALLET INFORMATION

Quantity of Cases Per Pallet Layer	12 Cases	Pallet Height	1.58 MTR
Quantity of Layers Per Pallet	10 Layers	Pallet Gross Weight	1062 kg
Quantity of Cases Per Pallet	120 Cases		

PACKAGING

Inner Component Packaging						
Type	Materials	Weight	Recycled Material %	Recyclable	Returnable	Composite
Can	Aluminium	295.2 g				
Outer Case Packaging						
Type	Materials	Weight	Recycled Material %	Recyclable	Returnable	Composite
Case	Plastic	16.977 g				
Case	Paper/Cardboard	51.2 g				
Transport Packaging						
Type	Materials	Weight	Recycled Material %	Recyclable	Returnable	Composite
Pallet	Paper/Cardboard	6.6825E-5 g				
Pallet	Plastic	3.125 g				

OTHER INFORMATION CONTACT INFORMATION

Address	Technical
Coca-Cola	Data Queries
Coca-Cola Europacific Partners Great Britain Limited	npidataexchange@ccep.com
Pemberton House, Bakers Road	
UB8 1EZ	
Uxbridge	
United Kingdom	
contact@ccep.com	
08081000000	

The information on the [Erudus System](#) has been supplied by the manufacturers of the products and, whilst the owners of the Erudus System take steps to ensure the information is regularly updated, they give no warranty and no guarantee that the information is accurate. Product information and ingredients may change, please always read product labels carefully in addition to using the information provided by Erudus.

We do not accept liability for any inaccuracies or incorrect information contained on this site.
Please visit <http://www.erudus.com/terms-and-conditions> for full terms and conditions.