

02010

Kenco Decaf Instant Coffee 300g, Vending Bag

Kenco Decaf Instant Coffee 300g, Vending Bag

PRODUCT DESCRIPTION

Freeze-dried decaffeinated instant coffee

Brand	Jacobs Douwe Egberts Professional GB
Manufacturer Product Code	4032078
Product Type	Drink
Product Category	Tea & Coffee
Storage Type	Ambient
Erudus ID	5b5035e09ef3492c8ae18c5bf29fb65b
Specification Type	Legacy



Inner Component GTIN 8711000518410

Outer Case GTIN 8711000518427



INGREDIENTS

Ingredient Declaration

Soluble coffee

ALLERGENS

Product Contains:

Celery/Celeriac	No	Mustard	No
Cereals Containing Gluten	No	Nuts (Tree)	No
Barley	No	Almond nuts	No
Oats	No	Brazil nuts	No
Rye	No	Cashew nuts	No
Wheat (including Spelt and Khorasan)	No	Hazelnuts	No
Crustacea	No	Macadamia (Queensland) nuts	No
Eggs	No	Pecan nuts	No
Fish	No	Pistachio nuts	No
Lupin	No	Walnuts	No
Milk	No	Peanuts	No
Molluscs	No	Sesame Seeds	No
		Soybeans	No
		Sulphur Dioxide and Sulphites	No

Additional Allergen Information

n/a

SUPPLEMENTARY
INGREDIENT
INFORMATION

Palm Oil	No
Hydrogenated Vegetable Oil/Fat	No
GM Protein/DNA	No

ADDITIVES

Product Contains:

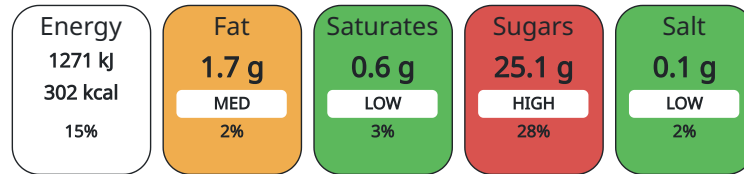
Artificial Antioxidants	No	Artificial Flavourings	No
Artificial Colours	No	Artificial Preservatives	No
Artificial Flavour Enhancers	No	Artificial Sweeteners	No

DIET SUITABILITY

Suitable for Coeliacs	No	Halal Diet	No
Kosher Diet	Suitable for	Vegetarian Diet	Suitable for
Vegan Diet	Suitable for		

NUTRITIONAL
INFORMATION

Each 100g/ml portion contains:



of your reference intake.

Typical values per 100g/ml : Energy 302kcal / 1271kJ

Nutrient	per 100g/ml	RI per 100g/ml
Energy (kJ)	1271 kJ	15%
Energy (kcal)	302 kcal	15%
Fat	1.7 g	2%
of which Saturates	0.6 g	3%
Carbohydrate	42 g	16%
of which Sugars	25.1 g	28%
Protein	19.5 g	39%
Salt	0.1 g	2%

HANDLING &
STORAGE
INFORMATION

Directions For Use

Add 1.4g of coffee to your cup for every 170ml of hot water, just off the boil

Storage Instructions

STORE IN A COOL, DRY PLACE

Shelf Life from Time of Production 730 Days

ORIGIN

Product Country of Origin United Kingdom

PRODUCT
CHARACTERISTICS
CONFIGURATION

Standards Testing

Case Configuration

Inner Pack Configuration

Total Quantity of Inner Components in 10 Units

Outer Case

Is the Outer Case Splittable? Yes

PRODUCT WEIGHTS

Inner Component	
Variable Weight Consumer Item	No
Net Drained Weight	0.3 kg
Weight/Volume	
0.31Kg	
Outer Case	
Outer Case Gross Weight	3.49 kg
Outer Case Net Weight	3 kg

PRODUCT DIMENSIONS

Inner Component	
Inner Component Depth	90 mm
Inner Component Width	60 mm
Inner Component Height	300 mm
Outer Case	
Outer Case Depth	380 mm
Outer Case Width	220 mm
Outer Case Height	240 mm

PALLET INFORMATION

Quantity of Cases Per Pallet Layer	13 Cases	Pallet Height	1.11 MTR
Quantity of Layers Per Pallet	4 Layers	Pallet Gross Weight	210 kg
Quantity of Cases Per Pallet	52 Cases		

PACKAGING

Inner Component Packaging						
Type	Materials	Weight	Recycled Material %	Recyclable	Returnable	Composite
Bag	Plastic	9.8 g				
Outer Case Packaging						
Type	Materials	Weight	Recycled Material %	Recyclable	Returnable	Composite
Case	Plastic	2.4 g				
Case	Paper/Cardboard	335 g				
Transport Packaging						
Type	Materials	Weight	Recycled Material %	Recyclable	Returnable	Composite
Other	Plastic	340 g				
Other	Paper/Cardboard	660.1 g				
Other	Wood	30000 g				

OTHER INFORMATION
CONTACT INFORMATION

	Identification/Health Marks	n/a
Address		
Jacobs Douwe Egberts Professional GB		
Quantum House		
60 Norden Road		
SL6 4AY		
Maidenhead		
Berkshire		
United Kingdom		
Gemma.Povey@jdecOFFEE.com		
+44 (0)1628 501 642		

The information on the [Erudus System](#) has been supplied by the manufacturers of the products and, whilst the owners of the Erudus System take steps to ensure the information is regularly updated, they give no warranty and no guarantee that the information is accurate. Product information and ingredients may change, please always read product labels carefully in addition to using the information provided by Erudus.

We do not accept liability for any inaccuracies or incorrect information contained on this site.
Please visit <http://www.erudus.com/terms-and-conditions> for full terms and conditions.