

Changed Nov 15, 2024 11:10

Reviewed Nov 15, 2024 11:10

Erudus ID a65d638476c34cff875f2def4be84441

Version 2.0

Status Published

11057

M&MS Crispy 24x36g GB IE

M&m's Crispy Chocolate Bag 36g 24x0.04kg

PRODUCT DESCRIPTION

Bite Size Chocolate

Brand	Mars
Manufacturer Product Code	464176
Product Type	Food
Product Category	Confectionery
Storage Type	Ambient
Erudus ID	a65d638476c34cff875f2def4be84441
Specification Type	Generic

Inner Component GTIN 5000159561662

Outer Case GTIN 5000159561679



INGREDIENTS

Ingredient Declaration

Sugar, Cocoa Mass, Rice Flour (9.2%), Skimmed MILK Powder, Cocoa Butter, Palm Kernel Fat, Palm Fat, Starch, Whey Permeate (MILK), MILK Fat, Glucose Syrup, Shea Fat, BARLEY Malt Extract, Stabiliser (Gum Arabic), Salt, Dextrin, Emulsifier (SOYA Lecithin), Dextrose, Glazing Agent (Carnauba Wax), Colours (E100, Carmine, E133, E160a, E160e, E170), Flavouring, Palm Kernel Oil, Milk Chocolate contains Milk Solids 14% minimum, Milk Chocolate contains Vegetable Fats in addition to Cocoa Butter

Ingredient Statements

Milk Chocolate contains Milk Solids 14% minimum. Milk Chocolate contains vegetable fats in addition to coca butter.

ALLERGENS

Product Contains:

Celery/Celery	No	Mustard	No
Cereals Containing Gluten	Yes	Nuts (Tree)	May Contain
Barley	Yes	Almond nuts	May Contain
Oats	No	Brazil nuts	May Contain
Rye	No	Cashew nuts	May Contain
Wheat (including Spelt and Khorasan)	No	Hazelnuts	May Contain
Crustacea	No	Macadamia (Queensland) nuts	May Contain
Eggs	No	Pecan nuts	May Contain
Fish	No	Pistachio nuts	May Contain
Lupin	No	Walnuts	May Contain
Milk	Yes	Peanuts	May Contain
Molluscs	No	Sesame Seeds	No
		Soybeans	Yes
		Sulphur Dioxide and Sulphites	No

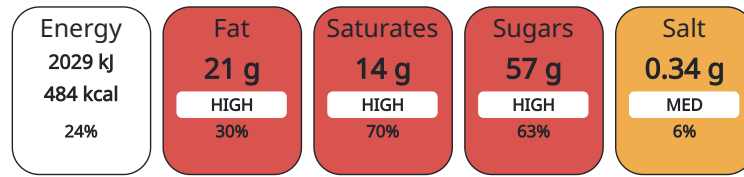
Risk Source:

SUPPLEMENTARY
INGREDIENT
INFORMATION
ADDITIVES

GM Protein/DNA No

Product Contains:

Each 100g/ml portion contains:



of your reference intake.

Typical values per 100g/ml : Energy 484kcal / 2029kJ

Nutrient	per 100g	RI per 100g
Energy (kJ)	2029 kJ	24%
Energy (kcal)	484 kcal	24%
Fat	21 g	30%
of which Saturates	14 g	70%
Carbohydrate	68 g	26%
of which Sugars	57 g	63%
Protein	4.3 g	9%
Salt	0.34 g	6%

HANDLING &
STORAGE
INFORMATION

Directions For Use

Ready to eat

Storage Instructions

Keep cool and dry

Shelf Life from Time of Production 364 Days

ORIGIN

Product Country of Origin France

Origin of the Primary Ingredient

PRODUCT
CHARACTERISTICS
CONFIGURATION

Standards Testing

Case Configuration

Inner Pack Configuration

Total Quantity of Inner Components in 24 Units

Outer Case

PRODUCT
WEIGHTS

Inner Component

Variable Weight Consumer Item No

Inner Component Weight 0.04 kg

Outer Case

Outer Case Gross Weight 1.08 kg

Outer Case Net Weight 0.86 kg

PRODUCT DIMENSIONS

Inner Component	
Inner Component Depth	0 mm
Inner Component Width	0 mm
Inner Component Height	0 mm
Outer Case	
Outer Case Depth	233 mm
Outer Case Width	146 mm
Outer Case Height	112 mm

PALLET INFORMATION

Quantity of Cases Per Pallet Layer	32 Cases	Pallet Height	1.62 MTR
Quantity of Layers Per Pallet	13 Layers	Pallet Gross Weight	480.11 kg
Quantity of Cases Per Pallet	416 Cases		

OTHER INFORMATION CONTACT INFORMATION

Address

Mars
3d Dundee Road
SL1 4LG
Slough
United Kingdom

adrian.holdstock@effem.com

Technical

Sharon Day
sharon.day@effem.com

The information on the [Erudus System](#) has been supplied by the manufacturers of the products and, whilst the owners of the Erudus System take steps to ensure the information is regularly updated, they give no warranty and no guarantee that the information is accurate. Product information and ingredients may change, please always read product labels carefully in addition to using the information provided by Erudus.

We do not accept liability for any inaccuracies or incorrect information contained on this site.
Please visit <http://www.erudus.com/terms-and-conditions> for full terms and conditions.