

Changed Nov 12, 2024 17:09

Reviewed Nov 12, 2024 17:09

Erudus ID 360c4894a75346929a135d6d534fde60

Version 1.0

Status Published

11058

Skittles Wild Berry Sweets Bag 45g

Skittles Wild Berry Sweets Bag 45g 36x0.05kg

PRODUCT DESCRIPTION

Chewy /Toffee Candy

Brand	Mars
Manufacturer Product Code	368714
Product Type	Food
Product Category	Confectionery
Storage Type	Ambient
Erudus ID	360c4894a75346929a135d6d534fde60
Specification Type	Generic

Inner Component GTIN	4009900522083
Outer Case GTIN	4009900522076

INGREDIENTS

Ingredient Declaration

Sugar, Glucose Syrup, Palm Fat, Acid Citric Acid, Dextrin, Maltodextrin, Flavourings, Modified Starch, Acidity Regulator Trisodium Citrate, Glazing Agent , Carnauba Wax, Concentrates (Sweet Potato, Radish), Colours E170, E100, E132, E132, E133, E160a, E162, E163, Emulsifier Lecithin

ALLERGENS

Product Contains:

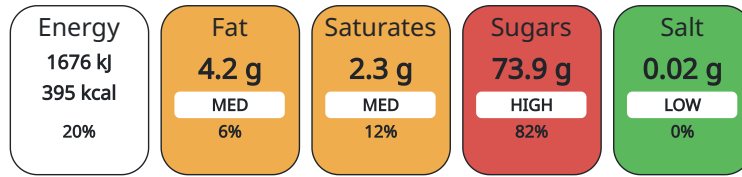
Celery/Celериac	No	Mustard	No
Cereals Containing Gluten	No	Nuts (Tree)	No
Barley	No	Almond nuts	No
Oats	No	Brazil nuts	No
Rye	No	Cashew nuts	No
Wheat (including Spelt and Khorasan)	No	Hazelnuts	No
Crustacea	No	Macadamia (Queensland) nuts	No
Eggs	No	Pecan nuts	No
Fish	No	Pistachio nuts	No
Lupin	No	Walnuts	No
Milk	No	Peanuts	No
Molluscs	No	Sesame Seeds	No
		Soybeans	No
		Sulphur Dioxide and Sulphites	No

SUPPLEMENTARY INGREDIENT INFORMATION ADDITIVES

GM Protein/DNA	No
-----------------------	----

Product Contains:

Each 100g/ml portion contains:



of your reference intake.

Typical values per 100g/ml : Energy 395kcal / 1676kJ

Nutrient	per 100g	RI per 100g
Energy (kJ)	1676 kJ	20%
Energy (kcal)	395 kcal	20%
Fat	4.2 g	6%
of which Saturates	2.3 g	12%
Carbohydrate	89 g	34%
of which Sugars	73.9 g	82%
Protein	0 g	
Salt	0.02 g	0%

HANDLING &
STORAGE
INFORMATION

Directions For Use

Ready to eat

Storage Instructions

Keep cool and dry

Shelf Life from Time of Production 455 Days

ORIGIN

Product Country of Origin Czech Republic

Origin of the Primary Ingredient

PRODUCT
CHARACTERISTICS
CONFIGURATION

Standards Testing

Case Configuration

Inner Pack Configuration

Total Quantity of Inner Components in 36 Units

Outer Case

PRODUCT
WEIGHTS

Inner Component

Variable Weight Consumer Item No

Inner Component Weight 0.05 kg

Outer Case

Outer Case Gross Weight 1.81 kg

Outer Case Net Weight 1.62 kg

PRODUCT
DIMENSIONS

Inner Component

Inner Component Depth 0 mm

Inner Component Width 0 mm

Inner Component Height 0 mm

Outer Case

Outer Case Depth 242 mm

Outer Case Width 122 mm

Outer Case Height 165 mm

PALLET
INFORMATION

Quantity of Cases Per Pallet Layer	36 Cases
Quantity of Layers Per Pallet	9 Layers
Quantity of Cases Per Pallet	324 Cases

Pallet Height	1.65 MTR
Pallet Gross Weight	621.49 kg

OTHER
INFORMATION
CONTACT
INFORMATION

Address

Mars
3d Dundee Road
SL1 4LG
Slough
United Kingdom

adrian.holdstock@effem.com

Technical

Sharon Day
sharon.day@effem.com

The information on the [Erudus System](#) has been supplied by the manufacturers of the products and, whilst the owners of the Erudus System take steps to ensure the information is regularly updated, they give no warranty and no guarantee that the information is accurate. Product information and ingredients may change, please always read product labels carefully in addition to using the information provided by Erudus.

We do not accept liability for any inaccuracies or incorrect information contained on this site.
Please visit <http://www.erudus.com/terms-and-conditions> for full terms and conditions.