

Changed Sep 26, 2025 08:35

Reviewed Sep 26, 2025 08:35

Erudus ID 29f8eefa2c774313bb095652c620dd8a

Version 1.0

Status Published

11060

M&M's Choco 45g 1 x 24

M&m's Choco Singles 24x45g

PRODUCT DESCRIPTION

Milk chocolate (68%) in a sugar shell.

Brand	Mars Wrigley Confectionery
Manufacturer	Mars
Manufacturer Product Code	280042
Product Type	Food
Product Category	Confectionery
Storage Type	Ambient
Erudus ID	29f8eefa2c774313bb095652c620dd8a
Specification Type	Generic



Inner Component GTIN	40111490
Outer Case GTIN	5000159460309



INGREDIENTS

Ingredient Declaration

Sugar, cocoa mass, skimmed **milk** powder, cocoa butter, **lactose**, starch, **milk** fat, palm fat, glucose syrup, shea fat, stabiliser (gum arabic), dextrin, colours*, carmine, emulsifier (**soya** lecithin), glazing agent (carnauba wax), salt, palm kernel oil, flavouring.

Ingredient Statements

Milk chocolate contains milk solids 14% minimum. *E100, E133, E160a, E160e, E170. Milk chocolate contains vegetable fats in addition to cocoa butter. Milk chocolate (68%) in a sugar shell.

ALLERGENS

Product Contains:

Celery/Celeriac	No	Mustard	No
Cereals Containing Gluten	No	Nuts (Tree)	May Contain
Barley	No	Almond nuts	May Contain
Oats	No	Brazil nuts	No
Rye	No	Cashew nuts	No
Wheat (including Spelt and Khorasan)	No	Hazelnuts	May Contain
Crustacea	No	Macadamia (Queensland) nuts	No
Eggs	No	Pecan nuts	No
Fish	No	Pistachio nuts	No
Lupin	No	Walnuts	No
Milk	Yes	Peanuts	May Contain
Molluscs	No	Sesame Seeds	No
		Soybeans	Yes
		Sulphur Dioxide and Sulphites	No

Risk Source:

Allergen Statement On Pack

May contain: almond, hazelnut, peanut

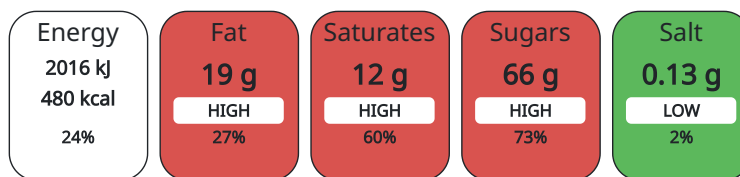
GM Protein/DNA	No
----------------	----

Product Contains:

SUPPLEMENTARY
INGREDIENT
INFORMATION
ADDITIVES

NUTRITIONAL
INFORMATION AS
SOLD

Each 100g/ml portion contains:



of your reference intake.

Typical values per 100g/ml : Energy 480kcal / 2016kJ

Nutrient	per 100g	RI per 100g	per 45g serving	RI per 45g serving
Energy (kJ)	2016 kJ	24%	907.2 kJ	11%
Energy (kcal)	480 kcal	24%	216 kcal	11%
Fat	19 g	27%	8.55 g	12%
of which Saturates	12 g	60%	5.4 g	27%
Carbohydrate	70 g	27%	31.5 g	12%
of which Sugars	66 g	73%	29.7 g	33%
Protein	5.2 g	10%	2.34 g	5%
Salt	0.13 g	2%	0.06 g	1%

Serving Size	45 g
--------------	------

HANDLING &
STORAGE
INFORMATION

Directions For Use

Ready to Eat

Storage Instructions

Keep Cool and Dry

Shelf Life from Time of Production	364 Days
------------------------------------	----------

ORIGIN	Product Country of Origin	France	
	Origin of the Primary Ingredient	Not Applicable	
PRODUCT CHARACTERISTICS CONFIGURATION	Standards Testing		
	Case Configuration		Inner Pack Configuration
	Total Quantity of Inner Components in Outer Case	24 Units	
PRODUCT WEIGHTS	Inner Component		
	Inner Component Weight	45 g	
	Outer Case		
	Outer Case Gross Weight	1.3 kg	
	Outer Case Net Weight	1.08 kg	
PRODUCT DIMENSIONS	Inner Component		
	Inner Component Depth	18 mm	
	Inner Component Width	135 mm	
	Inner Component Height	70 mm	
	Outer Case		
	Outer Case Depth	233 mm	
	Outer Case Width	146 mm	
	Outer Case Height	112 mm	
PALLET INFORMATION	Quantity of Cases Per Pallet Layer	32 Cases	Pallet Height 1.62 MTR
	Quantity of Layers Per Pallet	13 Layers	Pallet Gross Weight 570.8 kg
	Quantity of Cases Per Pallet	416 Cases	
OTHER INFORMATION CONTACT INFORMATION	Address		Technical
	Mars 3d Dundee Road SL1 4LG Slough United Kingdom adrian.holdstock@effem.com		Sharon Day sharon.day@effem.com

The information on the [Erudus System](#) has been supplied by the manufacturers of the products and, whilst the owners of the Erudus System take steps to ensure the information is regularly updated, they give no warranty and no guarantee that the information is accurate. Product information and ingredients may change, please always read product labels carefully in addition to using the information provided by Erudus.

We do not accept liability for any inaccuracies or incorrect information contained on this site.
Please visit <http://www.erudus.com/terms-and-conditions> for full terms and conditions.