

Changed Nov 12, 2024 17:09

Reviewed Nov 12, 2024 17:09

Erudus ID 7a5a2779ba2e44a7b40355b109a65421

Version 1.0

Status Published



11061

Starburst Original Fruit Chews 45g

Starburst Original Fruit Chews 45g 24x0.05kg

PRODUCT DESCRIPTION

Chewy / Toffee Candy

Brand	Mars
Manufacturer Product Code	312789
Product Type	Food
Product Category	Confectionery
Storage Type	Ambient
Erudus ID	7a5a2779ba2e44a7b40355b109a65421
Specification Type	Generic

Inner Component GTIN	90111334
Outer Case GTIN	4009900498173

INGREDIENTS

Ingredient Declaration

Glucose Syrup, Sugar, Palm Fat, Concentrated Fruit Juices 1.4% (Apple, Orange, Blackcurrant, Strawberry, Lime, Lemon), Acid Citric Acid, Modified Starch, Acid Malic Acid, Dextrin, Flavourings, Maltodextrin, Antioxidant Ascorbic Acid, Emulsifier Lecithin, Colour Anthocyanins, Beta-Carotene, Spirulina Extract, Equivalent to 11.5% Fruit Juice

ALLERGENS

Product Contains:

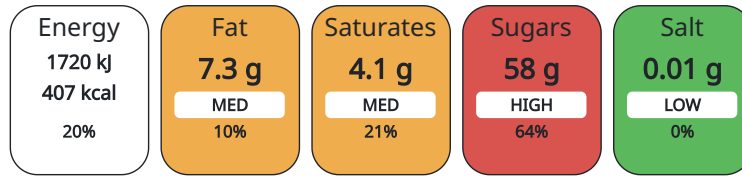
Celery/Celery	No	Mustard	No
Cereals Containing Gluten	No	Nuts (Tree)	No
Barley	No	Almond nuts	No
Oats	No	Brazil nuts	No
Rye	No	Cashew nuts	No
Wheat (including Spelt and Khorasan)	No	Hazelnuts	No
Crustacea	No	Macadamia (Queensland) nuts	No
Eggs	No	Pecan nuts	No
Fish	No	Pistachio nuts	No
Lupin	No	Walnuts	No
Milk	No	Peanuts	No
Molluscs	No	Sesame Seeds	No
		Soybeans	No
		Sulphur Dioxide and Sulphites	No

SUPPLEMENTARY INGREDIENT INFORMATION ADDITIVES

GM Protein/DNA	No
-----------------------	----

Product Contains:

Each 100g/ml portion contains:



of your reference intake.

Typical values per 100g/ml : Energy 407kcal / 1720kJ

Nutrient	per 100g	RI per 100g
Energy (kJ)	1720 kJ	20%
Energy (kcal)	407 kcal	20%
Fat	7.3 g	10%
of which Saturates	4.1 g	21%
Carbohydrate	84 g	32%
of which Sugars	58 g	64%
Protein	0 g	
Salt	0.01 g	0%

HANDLING &
STORAGE
INFORMATION

Directions For Use

Ready to eat

Storage Instructions

Keep cool and dry

Shelf Life from Time of Production 365 Days

ORIGIN

Product Country of Origin Czech Republic

Origin of the Primary Ingredient

PRODUCT
CHARACTERISTICS
CONFIGURATION

Standards Testing

Case Configuration

Inner Pack Configuration

Total Quantity of Inner Components in 24 Units

Outer Case

PRODUCT
WEIGHTS

Inner Component

Variable Weight Consumer Item No

Inner Component Weight 0.05 kg

Outer Case

Outer Case Gross Weight 1.25 kg

Outer Case Net Weight 1.08 kg

PRODUCT
DIMENSIONS

Inner Component

Inner Component Depth 0 mm

Inner Component Width 0 mm

Inner Component Height 0 mm

Outer Case

Outer Case Depth 161 mm

Outer Case Width 152 mm

Outer Case Height 94 mm

PALLET
INFORMATION

Quantity of Cases Per Pallet Layer	42 Cases
Quantity of Layers Per Pallet	11 Layers
Quantity of Cases Per Pallet	462 Cases

Pallet Height	1.2 MTR
Pallet Gross Weight	613.61 kg

OTHER
INFORMATION
CONTACT
INFORMATION

Address

Mars
3d Dundee Road
SL1 4LG
Slough
United Kingdom

adrian.holdstock@effem.com

Technical

Sharon Day
sharon.day@effem.com

The information on the [Erudus System](#) has been supplied by the manufacturers of the products and, whilst the owners of the Erudus System take steps to ensure the information is regularly updated, they give no warranty and no guarantee that the information is accurate. Product information and ingredients may change, please always read product labels carefully in addition to using the information provided by Erudus.

We do not accept liability for any inaccuracies or incorrect information contained on this site.
Please visit <http://www.erudus.com/terms-and-conditions> for full terms and conditions.