

Changed Oct 15, 2024 12:14

Reviewed Oct 15, 2024 12:14

Erudus ID 45ed2692d8ee417a88029826a88d5cd3

Version 2.0

Status Published

02115

NESCAFE ORIGINAL Classic Granules 6x750g

Nescafe Original Classic 6x750g

PRODUCT DESCRIPTION

Soluble coffee

| | |
|---------------------------|----------------------------------|
| Brand | Nestle UK |
| Manufacturer Product Code | 12533643 |
| Product Type | Drink |
| Product Category | Tea & Coffee |
| Storage Type | Ambient |
| Erudus ID | 45ed2692d8ee417a88029826a88d5cd3 |
| Specification Type | Drinks |



Inner Component GTIN 7613035298989

Outer Case GTIN 07613035298996



INGREDIENTS

Ingredient Declaration

Soluble coffee

ALLERGENS

Product Contains:

| | | | |
|--------------------------------------|----|-------------------------------|----|
| Celery/Celeriac | No | Mustard | No |
| Cereals Containing Gluten | No | Nuts (Tree) | No |
| Barley | No | Almond nuts | No |
| Oats | No | Brazil nuts | No |
| Rye | No | Cashew nuts | No |
| Wheat (including Spelt and Khorasan) | No | Hazelnuts | No |
| Crustacea | No | Macadamia (Queensland) nuts | No |
| Eggs | No | Pecan nuts | No |
| Fish | No | Pistachio nuts | No |
| Lupin | No | Walnuts | No |
| Milk | No | Peanuts | No |
| Molluscs | No | Sesame Seeds | No |
| | | Soybeans | No |
| | | Sulphur Dioxide and Sulphites | No |

SUPPLEMENTARY
INGREDIENT
INFORMATION

| | |
|--------------------------------|----|
| Palm Oil | No |
| Hydrogenated Vegetable Oil/Fat | No |
| GM Protein/DNA | No |

ADDITIVES

Product Contains:

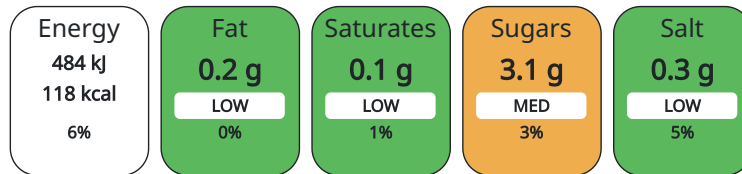
| | | | |
|------------------------------|----|--------------------------|----|
| Artificial Antioxidants | No | Artificial Flavourings | No |
| Artificial Colours | No | Artificial Preservatives | No |
| Artificial Flavour Enhancers | No | Artificial Sweeteners | No |

DIET SUITABILITY

| | | | |
|------------|--------------|-----------------|--------------|
| Vegan Diet | Suitable for | Vegetarian Diet | Suitable for |
| Halal Diet | Suitable for | Kosher Diet | Suitable for |

NUTRITIONAL
INFORMATION AS
SOLD

Each 100g/ml portion contains:



of your reference intake.

Typical values per 100g/ml : Energy 118kcal / 484kj

| Nutrient | per 100g | RI per 100g |
|--------------------|----------|-------------|
| Energy (kJ) | 484 kJ | 6% |
| Energy (kcal) | 118 kcal | 6% |
| Fat | 0.2 g | 0% |
| of which Saturates | 0.1 g | 1% |
| Carbohydrate | 3.1 g | 1% |
| of which Sugars | 3.1 g | 3% |
| Fibre | 34.1 g | |
| Protein | 7.8 g | 16% |
| Salt | 0.3 g | 5% |

HANDLING &
STORAGE
INFORMATION

Directions For Use

For the perfect serve Always use a dry measure and freshly boiled water (not boiling hot) 1 rounded teaspoon (minimum 1.8g) per mug 1 rounded tablespoon (minimum 6g) per pint

Storage Instructions

Store in a cool, dry place

Shelf Life from Time of Production 720 Days

ACCREDITATIONS/
CERTIFICATIONS/
ASSURANCE
SCHEMES
ORIGIN

FSSC 22000

Product Country of Origin United Kingdom

Origin of the Primary Ingredient

PRODUCT
CHARACTERISTICS

| | | | |
|---|----|-----------------------------------|----|
| Standards Testing | | | |
| Do you undertake trend analysis of microbiological results? | No | Is shelf life testing undertaken? | No |

| | | | | | | | | |
|---------------------|---|--|--------------------|----------------------------|---------------------------------|-------------------|------------------|--|
| CONFIGURATION | Case Configuration | | | Inner Pack Configuration | | | | |
| | Total Quantity of Inner Components in Outer Case | | 6 Units | | | | | |
| | Is the Outer Case Splittable? | | Yes | | | | | |
| PRODUCT WEIGHTS | Inner Component | | | | | | | |
| | Inner Component Weight | | 750 g | | | | | |
| | Outer Case | | | | | | | |
| | Outer Case Gross Weight | | 6.27 kg | | | | | |
| | Outer Case Net Weight | | 4.5 kg | | | | | |
| PRODUCT DIMENSIONS | Inner Component | | | | | | | |
| | Inner Component Depth | | 210 mm | | | | | |
| | Inner Component Width | | 108 mm | | | | | |
| | Inner Component Height | | 193 mm | | | | | |
| | Outer Case | | | | | | | |
| | Outer Case Depth | | 424 mm | | | | | |
| | Outer Case Width | | 323 mm | | | | | |
| | Outer Case Height | | 194 mm | | | | | |
| PALLET INFORMATION | Quantity of Cases Per Pallet Layer | | 8 Cases | Pallet Height | | 1.33 MTR | | |
| | Quantity of Layers Per Pallet | | 6 Layers | Pallet Gross Weight | | 331 kg | | |
| | Quantity of Cases Per Pallet | | 48 Cases | | | | | |
| PACKAGING | Inner Component Packaging | | | | | | | |
| | Type | Materials | Weight | Recycled Material % | Recyclable | Returnable | Composite | |
| | Tin | Plastic | 38 g | | | | | |
| | Tin | Steel | 238.5 g | | | | | |
| | Outer Case Packaging | | | | | | | |
| | Type | Materials | Weight | Recycled Material % | Recyclable | Returnable | Composite | |
| | Case | Plastic | 80 g | | | | | |
| | Case | Paper/Cardboard | 23.6 g | | | | | |
| | OTHER INFORMATION CONTACT INFORMATION | Address | | | Complaints | | | |
| | | Contact our Professionals: Nestle Professional | | | consumer.services@uk.nestle.com | | | |
| Nestle Professional | | | 0800 00 00 30 (UK) | | | | | |
| Haxby Road | | | | | | | | |
| YO91 1WS | | | | | | | | |
| York | | | | | | | | |
| United Kingdom | | | | | | | | |
| 0800 00 0030 (UK) | | | | | | | | |

The information on the [Erudus System](#) has been supplied by the manufacturers of the products and, whilst the owners of the Erudus System take steps to ensure the information is regularly updated, they give no warranty and no guarantee that the information is accurate. Product information and ingredients may change, please always read product labels carefully in addition to using the information provided by Erudus.

We do not accept liability for any inaccuracies or incorrect information contained on this site. Please visit <http://www.erudus.com/terms-and-conditions> for full terms and conditions.