

Changed Jan 30, 2025 13:46

Reviewed Jan 30, 2025 13:46

Erudus ID cea23b54f1ad4d45a3d8468f861402ef

Version 1.0

Status Published

03002

CDM 100G CARAMEL NIBBLES 10CA

Cdm 100g Caramel Nibbles Ea 10x100g

PRODUCT DESCRIPTION

Milk chocolates with a soft caramel centre (25 %).

Brand	Mondelez UK Ltd
Manufacturer Product Code	4316844
Product Type	Food
Product Category	Confectionery
Storage Type	Ambient
Erudus ID	cea23b54f1ad4d45a3d8468f861402ef
Specification Type	Generic

Inner Component GTIN 07622202257940

Outer Case GTIN 07622202257933



INGREDIENTS

Ingredient Declaration

MILK**, sugar, cocoa butter, glucose syrup, vegetable fats (palm, shea), glucose-fructose syrup, cocoa mass, whey powder (from MILK), emulsifier (E442), flavourings, salt, acidity regulator (sodium carbonates).

Ingredient Statements

**The equivalent of 426 ml of fresh liquid milk in every 227 g of milk chocolate. MILK CHOCOLATE: MILK SOLIDS 20 % MINIMUM, ACTUAL 23 %. CONTAINS VEGETABLE FATS IN ADDITION TO COCOA BUTTER

ALLERGENS

Product Contains:

Celery/Celeriac	No	Mustard	No
Cereals Containing Gluten	No	Nuts (Tree)	No
Barley	No	Almond nuts	No
Oats	No	Brazil nuts	No
Rye	No	Cashew nuts	No
Wheat (including Spelt and Khorasan)	No	Hazelnuts	No
Crustacea	No	Macadamia (Queensland) nuts	No
Eggs	No	Pecan nuts	No
Fish	No	Pistachio nuts	No
Lupin	No	Walnuts	No
Milk	Yes	Peanuts	No
Molluscs	No	Sesame Seeds	No
		Soybeans	No
		Sulphur Dioxide and Sulphites	No

SUPPLEMENTARY
INGREDIENT
INFORMATION
ADDITIVES

GM Protein/DNA No

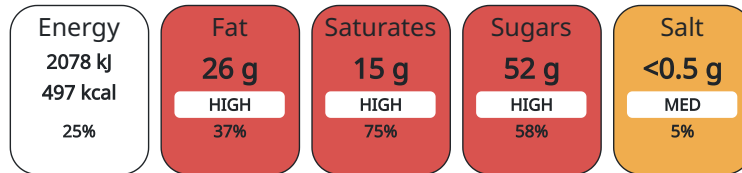
Product Contains:

DIET SUITABILITY

Vegan Diet	No	Vegetarian Diet	Suitable for
Halal Diet	No	Kosher Diet	No

NUTRITIONAL
INFORMATION AS
SOLD

Each 100g/ml portion contains:



of your reference intake.

Typical values per 100g/ml : Energy 497kcal / 2078kj

Nutrient	per 100g	RI per 100g
Energy (kJ)	2078 kJ	25%
Energy (kcal)	497 kcal	25%
Fat	26 g	37%
of which Saturates	15 g	75%
Carbohydrate	59 g	23%
of which Sugars	52 g	58%
Fibre	1.6 g	
Protein	5.7 g	11%
Salt	0.31 g	5%

Serving Size Description 1 portion = 8 pieces (24 g).
Approximately 4 portions per pack.

Number of Servings 4 Servings

HFSS (HIGH IN
FAT, SALT AND
SUGAR)

HFSS Status Yes

HFSS Score 26

HANDLING &
STORAGE
INFORMATION

Directions For Use

Ready to eat.

Storage Instructions

Store in a dry place. Protect from heat.

Shelf Life from Time of Production 275 Days

ORIGIN

Product Country of Origin Great Britain

Origin of the Primary Ingredient

PRODUCT
CHARACTERISTICS
CONFIGURATION

Standards Testing

Case Configuration Inner Pack Configuration

Total Quantity of Inner Components in Outer Case 10 Units

PRODUCT WEIGHTS

Inner Component	
Variable Weight Consumer Item	No
Inner Component Weight	100 g
Outer Case	
Outer Case Gross Weight	1.17 kg
Outer Case Net Weight	1 kg

PRODUCT DIMENSIONS

Inner Component	
Inner Component Depth	37 mm
Inner Component Width	112 mm
Inner Component Height	155 mm
Outer Case	
Outer Case Depth	385 mm
Outer Case Width	119 mm
Outer Case Height	152 mm

PALLET INFORMATION

Quantity of Cases Per Pallet Layer	25 Cases	Pallet Type	Euro Pallet
Quantity of Layers Per Pallet	10 Layers	Pallet Height	1.68 MTR
Quantity of Cases Per Pallet	250 Cases	Pallet Gross Weight	292.83 kg

OTHER INFORMATION CONTACT INFORMATION

Address

Mondelez UK Ltd
PO Box 12
Bournville Lane
B30 2LU
Bournville
Birmingham
England

thomas.brooks@mdlz.com
+44 1214 582 000

Technical

Tomas Sakalik
tomas.sakalik@mdlz.com
Publication Expert

The information on the [Erudus System](#) has been supplied by the manufacturers of the products and, whilst the owners of the Erudus System take steps to ensure the information is regularly updated, they give no warranty and no guarantee that the information is accurate. Product information and ingredients may change, please always read product labels carefully in addition to using the information provided by Erudus.

We do not accept liability for any inaccuracies or incorrect information contained on this site.
Please visit <http://www.erudus.com/terms-and-conditions> for full terms and conditions.