

08104

Walkers Quavers Cheese Snacks Crisps 34g x 30

Walkers Quavers Cheese Snacks 34g 30x34g

PRODUCT DESCRIPTION

Walkers Quavers Snacks Cheese 34g

Brand	Walkers Snacks Limited (PepsiCo)
Manufacturer Product Code	300002516
Product Type	Food
Product Category	Nuts and Seeds
Storage Type	Ambient
Erudus ID	2a7f1a47f4ad446c8091c4910812f996
Specification Type	Legacy



Inner Component GTIN 05000328529660

Outer Case GTIN 05000328529677



INGREDIENTS

Ingredient Declaration

Potato Starch, Sunflower Oil, Cheese Flavour [Whey Powder (from MILK), Flavouring (contains MILK), Flavour Enhancers (Monosodium Glutamate, Disodium 5'-Ribonucleotide), MILK Powder, Cheese Powder (from MILK), Potassium Chloride, Garlic Powder, Acid (Lactic Acid), Colour (Paprika Extract)], Rice Flour, SOYA Flour, Salt, Yeast, Onion Powder (Malt Flour from BARLEY), Pepper, WHEAT flour (contains Calcium, Iron, Niacin, Thiamin), Colour (Annatto norbixin)

ALLERGENS

Product Contains:

Celery/Celery	May Contain	Mustard	May Contain
Cereals Containing Gluten	Yes	Nuts (Tree)	No
Barley	Yes	Almond nuts	No
Oats	No	Brazil nuts	No
Rye	No	Cashew nuts	No
Wheat (including Spelt and Khorasan)	Yes	Hazelnuts	No
Crustacea	No	Macadamia (Queensland) nuts	No
Eggs	No	Pecan nuts	No
Fish	No	Pistachio nuts	No
Lupin	No	Walnuts	No
Milk	Yes	Peanuts	No
Molluscs	No	Sesame Seeds	No
		Soybeans	Yes
		Sulphur Dioxide and Sulphites	No

Risk Source:

Additional Allergen Information

Contains: See highlighted ingredients

**SUPPLEMENTARY
INGREDIENT
INFORMATION
ADDITIVES**

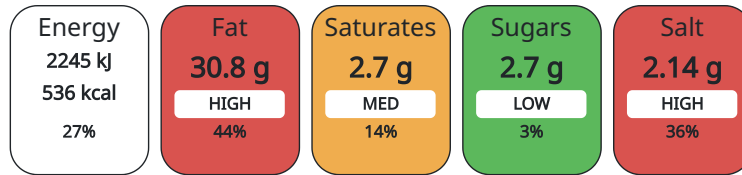
GM Protein/DNA	No
<i>Product Contains:</i>	
Artificial Antioxidants	No
Artificial Colours	No
Artificial Flavour Enhancers	Yes

Artificial Preservatives No**DIET SUITABILITY**

Suitable for Coeliacs	No
Kosher Diet	No
Vegan Diet	No

Halal Diet No**Vegetarian Diet** Suitable for**NUTRITIONAL
INFORMATION**

Each 100g/ml portion contains:



of your reference intake.

Typical values per 100g/ml : Energy 536kcal / 2245kJ

Nutrient	per 100g/ml	RI per 100g/ml
Energy (kJ)	2245 kJ	27%
Energy (kcal)	536 kcal	27%
Fat	30.8 g	44%
of which Saturates	2.7 g	14%
Carbohydrate	62.1 g	24%
of which Sugars	2.7 g	3%
Fibre	1.2 g	
Protein	2.5 g	5%
Salt	2.14 g	36%

**HFSS (HIGH IN
FAT, SALT AND
SUGAR)****HFSS Status** Yes**HANDLING &
STORAGE
INFORMATION****Directions For Use**

This pack contains 1 serving

Storage Instructions

Store in a cool dry place They are best when consumed immediately after opening.

Shelf Life from Time of Production 112 Days**ORIGIN****Product Country of Origin** United Kingdom**PRODUCT
CHARACTERISTICS
CONFIGURATION**

Standards Testing

Case Configuration

Inner Pack Configuration

Total Quantity of Inner Components in 30 Units**Outer Case**

PRODUCT WEIGHTS

Inner Component	
Variable Weight Consumer Item	No
Inner Component Weight	34 g
Outer Case	
Outer Case Gross Weight	1.38 kg
Outer Case Net Weight	1.02 kg

PRODUCT DIMENSIONS

Inner Component	
Inner Component Depth	400 mm
Inner Component Width	159 mm
Inner Component Height	215 mm
Outer Case	
Outer Case Depth	399 mm
Outer Case Width	299 mm
Outer Case Height	319 mm

PALLET INFORMATION

Quantity of Cases Per Pallet Layer	10 Cases	Pallet Height	2.28 MTR
Quantity of Layers Per Pallet	7 Layers	Pallet Gross Weight	100.8 kg
Quantity of Cases Per Pallet	70 Cases		

OTHER INFORMATION CONTACT INFORMATION

Address

Walkers Snacks Limited (PepsiCo)
450 South Oak Way
Green Park
RG2 6UW
Reading
United Kingdom

karthick.s@pepsico.com
07824608485

Commercial

Olivia.Greenaway@pepsico.com
olivia.greenaway@pepsico.com

The information on the [Erudus System](#) has been supplied by the manufacturers of the products and, whilst the owners of the Erudus System take steps to ensure the information is regularly updated, they give no warranty and no guarantee that the information is accurate. Product information and ingredients may change, please always read product labels carefully in addition to using the information provided by Erudus.

We do not accept liability for any inaccuracies or incorrect information contained on this site.
Please visit <http://www.erudus.com/terms-and-conditions> for full terms and conditions.