

Changed Mar 12, 2026 10:31

Reviewed Mar 12, 2026 10:31

Erudus ID de64f218619a40349bb566f95621d2d6

Version 3.0

Status Published

09017

# Jacob's Mini Cheddars Original 30 x 45g

Mini Cheddars Original 45x45g

## PRODUCT DESCRIPTION

Cheese Snack Biscuits

Brand	<a href="#">Pladis (UK) Ltd</a>
Manufacturer Product Code	42826
Product Type	Food
Product Category	Biscuits, Wafers and Crackers
Storage Type	Ambient
Erudus ID	de64f218619a40349bb566f95621d2d6
Specification Type	Bakery Products

Inner Component GTIN 5000168031064

Outer Case GTIN 5000168031057



## INGREDIENTS

### Ingredient Declaration

Flour (WHEAT Flour, Calcium, Iron, Niacin, Thiamin), Vegetable Oils (Palm), Dried Cheese (10%) (MILK) [Dried Powdered Cheese (MILK), Natural Flavouring], Sugar, Glucose Syrup, Salt, Dried Whey (MILK), BARLEY Malt Extract, Raising Agents (Ammonium Bicarbonate, Sodium Bicarbonate), Acid (Lactic Acid), Natural Flavourings.

## ALLERGENS

*Product Contains:*

Celery/Celeriac	No	Mustard	No
Cereals Containing Gluten	Yes	Nuts (Tree)	No
Barley	Yes	Almond nuts	No
Oats	No	Brazil nuts	No
Rye	No	Cashew nuts	No
Wheat (including Spelt and Khorasan)	Yes	Hazelnuts	No
Crustacea	No	Macadamia (Queensland) nuts	No
Eggs	May Contain	Pecan nuts	No
Fish	No	Pistachio nuts	No
Lupin	No	Walnuts	No
Milk	Yes	Peanuts	No
Molluscs	No	Sesame Seeds	No
		Soybeans	May Contain
		Sulphur Dioxide and Sulphites	No

*Risk Source:*

### Additional Allergen Information

Contains: Milk, Gluten (Wheat, Barley). May also contain Egg, Soya. The additional may contain allergens (Rye, Kamut, Spelt, Oats) relate to the inherent risk in the supply chain from different cereals from field to manufacturing.

### SUPPLEMENTARY INGREDIENT INFORMATION

<b>Palm Oil</b>	Yes
<b>Hydrogenated Vegetable Oil/Fat</b>	No
<b>GM Protein/DNA</b>	No

### ADDITIVES

*Product Contains:*

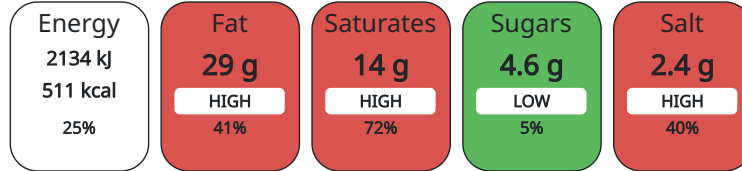
<b>Artificial Colours</b>	No	<b>Artificial Flavourings</b>	No
---------------------------	----	-------------------------------	----

### DIET SUITABILITY

<b>Vegan Diet</b>	No	<b>Vegetarian Diet</b>	No
<b>Halal Diet</b>	No	<b>Kosher Diet</b>	No

### NUTRITIONAL INFORMATION AS SOLD

Each 100g/ml portion contains:



of your reference intake.

Typical values per 100g/ml : Energy 511kcal / 2134kj

Nutrient	per 100g	RI per 100g
Energy (kJ)	2134 kJ	25%
Energy (kcal)	511 kcal	26%
Fat	28.6 g	41%
of which Saturates	14.4 g	72%
Carbohydrate	51.5 g	20%
of which Sugars	4.6 g	5%
Fibre	2.6 g	
Protein	10.3 g	21%
Salt	2.4 g	40%

### HFSS (HIGH IN FAT, SALT AND SUGAR)

<b>HFSS Status</b>	Yes
<b>HFSS Score</b>	25

### HANDLING & STORAGE INFORMATION

#### Directions For Use

Ready to Eat.

#### Storage Instructions

Store in a cool, dry place. Once opened store in an airtight container.

<b>Shelf Life from Time of Production</b>	217 Days
-------------------------------------------	----------

### ACCREDITATIONS/ CERTIFICATIONS/ ASSURANCE SCHEMES ORIGIN

<b>BRCGS Certified</b>	<b>Roundtable of Sustainable Palm Oil (RSPO)</b>
------------------------	--------------------------------------------------

<b>Product Country of Origin</b>	United Kingdom
----------------------------------	----------------

<b>Origin of the Primary Ingredient</b>	United Kingdom
-----------------------------------------	----------------

### PRODUCT CHARACTERISTICS

<b>Standards Testing</b>			
<b>Do you undertake trend analysis of microbiological results?</b>	No	<b>Is shelf life testing undertaken?</b>	No

CONFIGURATION	Case Configuration		Inner Pack Configuration				
	<b>Total Quantity of Inner Components in Outer Case</b>	45 Units					
PRODUCT WEIGHTS	Inner Component						
	<b>Variable Weight Consumer Item</b>	No					
	<b>Inner Component Weight</b>	45 g					
	Outer Case						
PRODUCT DIMENSIONS	<b>Outer Case Gross Weight</b>	1.49 kg					
	<b>Outer Case Net Weight</b>	1.35 kg					
	Inner Component						
	<b>Inner Component Depth</b>	45 mm					
	<b>Inner Component Width</b>	114 mm					
	<b>Inner Component Height</b>	150 mm					
	Outer Case						
	<b>Outer Case Depth</b>	396 mm					
PALLET INFORMATION	<b>Outer Case Width</b>	296 mm					
	<b>Outer Case Height</b>	142 mm					
	<b>Quantity of Cases Per Pallet Layer</b>	10 Cases	<b>Pallet Height</b>	1.3 MTR			
	<b>Quantity of Layers Per Pallet</b>	8 Layers	<b>Pallet Gross Weight</b>	147 kg			
PACKAGING	<b>Quantity of Cases Per Pallet</b>	80 Cases					
	Inner Component Packaging						
	<b>Type</b>	<b>Materials</b>	<b>Weight</b>	<b>Recycled Material %</b>	<b>Recyclable</b>	<b>Returnable</b>	<b>Composite</b>
	Film	Plastic	1.58 g				
	Outer Case Packaging						
	<b>Type</b>	<b>Materials</b>	<b>Weight</b>	<b>Recycled Material %</b>	<b>Recyclable</b>	<b>Returnable</b>	<b>Composite</b>
	Case	Plastic	47.4 g				
	Case	Paper/Cardboard	239 g				
OTHER INFORMATION	<b>Commodity Code</b>	1905904500					
CONTACT INFORMATION	<b>Address</b>	Pladis (UK) Ltd pladis, Building 3, Chiswick Park 566 Chiswick High Road W4 5YA Chiswick London England  Anna.Stachniak@pladisglobal.com					

The information on the [Erudus System](#) has been supplied by the manufacturers of the products and, whilst the owners of the Erudus System take steps to ensure the information is regularly updated, they give no warranty and no guarantee that the information is accurate. Product information and ingredients may change, please always read product labels carefully in addition to using the information provided by Erudus.

We do not accept liability for any inaccuracies or incorrect information contained on this site.  
Please visit <http://www.erudus.com/terms-and-conditions> for full terms and conditions.