

Changed Jun 23, 2025 15:27

Reviewed Jun 23, 2025 15:27

Erudus ID ffb0573b4026494a901c596ea1f1dce4

Version 2.0

Status Published

09043

Jacob's Mini Cheddars Red Leicester Flavour 30x45g

Mini Cheddars Red Leicester Flavour 30x45g

PRODUCT DESCRIPTION

Cheese Snack Biscuits with Red Leicester Cheese Flavour

Brand	Pladis (UK) Ltd
Manufacturer Product Code	42828
Product Type	Food
Product Category	Biscuits, Wafers and Crackers
Storage Type	Ambient
Erudus ID	ffb0573b4026494a901c596ea1f1dce4
Specification Type	Bakery Products

Inner Component GTIN 5000168031026

Outer Case GTIN 5000168031019



INGREDIENTS

Ingredient Declaration

Flour (WHEAT Flour, Calcium, Iron, Niacin, Thiamin), Vegetable Oil (Palm), Dried Powdered Cheese (6%) (MILK), Cheddar and Red Leicester Cheese Flavouring (MILK) [Salt, WHEAT Flour, Natural Flavourings, Dried BUTTERMILK, Maltodextrin, Sugar, Acid (Citric Acid), Emulsifier (Gum Arabic)], Glucose Syrup, Sugar, Dried Whey (MILK), BARLEY Malt Extract, Raising Agents (Ammonium Bicarbonate, Sodium Bicarbonate), Salt, Acid (Lactic Acid), Natural Flavourings.

ALLERGENS

Product Contains:

Celery/Celeryiac	No	Mustard	No
Cereals Containing Gluten	Yes	Nuts (Tree)	No
Barley	Yes	Almond nuts	No
Oats	May Contain	Brazil nuts	No
Rye	May Contain	Cashew nuts	No
Wheat (including Spelt and Khorasan)	Yes	Hazelnuts	No
Crustacea	No	Macadamia (Queensland) nuts	No
Eggs	No	Pecan nuts	No
Fish	No	Pistachio nuts	No
Lupin	No	Walnuts	No
Milk	Yes	Peanuts	No
Molluscs	No	Sesame Seeds	No
		Soybeans	May Contain
		Sulphur Dioxide and Sulphites	No

Risk Source:

Additional Allergen Information

Contains: Milk, Gluten (Wheat, Barley). May also contain Soya.

**SUPPLEMENTARY
INGREDIENT
INFORMATION**

Palm Oil	Yes
Hydrogenated Vegetable Oil/Fat	No
GM Protein/DNA	No

ADDITIVES*Product Contains:*

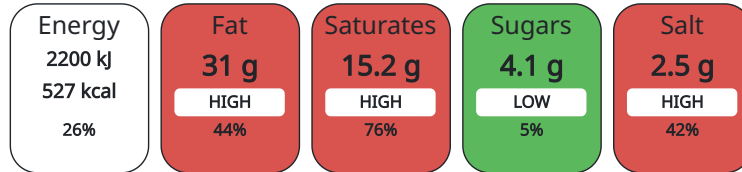
Artificial Colours	No	Artificial Flavourings	No
---------------------------	----	-------------------------------	----

DIET SUITABILITY

Vegan Diet	No	Vegetarian Diet	No
Halal Diet	No	Kosher Diet	No

**NUTRITIONAL
INFORMATION AS
SOLD**

Each 100g/ml portion contains:



of your reference intake.

Typical values per 100g/ml : Energy 527kcal / 2200kJ

Nutrient	per 100g	RI per 100g
Energy (kJ)	2200 kJ	26%
Energy (kcal)	527 kcal	26%
Fat	31 g	44%
of which Saturates	15.2 g	76%
Carbohydrate	51.2 g	20%
of which Sugars	4.1 g	5%
Fibre	2.6 g	
Protein	8.9 g	18%
Salt	2.5 g	42%

**HFSS (HIGH IN
FAT, SALT AND
SUGAR)**

HFSS Status	Yes
HFSS Score	24

**HANDLING &
STORAGE
INFORMATION****Directions For Use**

Ready to Eat.

Storage Instructions

Store in a cool, dry place. Once opened store in an airtight container.

Shelf Life from Time of Production	245 Days
---	----------

**ACCREDITATIONS/
CERTIFICATIONS/
ASSURANCE
SCHEMES
ORIGIN**

BRCGS Certified	Roundtable of Sustainable Palm Oil (RSPO)
Product Country of Origin	United Kingdom
Origin of the Primary Ingredient	United Kingdom

**PRODUCT
CHARACTERISTICS**

Standards Testing			
Do you undertake trend analysis of microbiological results?	No	Is shelf life testing undertaken?	No

CONFIGURATION	Case Configuration	Inner Pack Configuration					
PRODUCT WEIGHTS	Total Quantity of Inner Components in Outer Case	30 Units					
	Inner Component						
	Variable Weight Consumer Item	No					
	Inner Component Weight	45 g					
	Outer Case						
	Outer Case Gross Weight	1.49 kg					
PRODUCT DIMENSIONS	Outer Case Net Weight	1.35 kg					
	Inner Component						
	Inner Component Depth	45 mm					
	Inner Component Width	114 mm					
	Inner Component Height	150 mm					
	Outer Case						
PALLET INFORMATION	Outer Case Depth	396 mm					
	Outer Case Width	296 mm					
	Outer Case Height	142 mm					
	Quantity of Cases Per Pallet Layer	10 Cases	Pallet Height	1.3 MTR			
	Quantity of Layers Per Pallet	8 Layers	Pallet Gross Weight	147 kg			
	Quantity of Cases Per Pallet	80 Cases					
PACKAGING	Inner Component Packaging						
	Type	Materials	Weight	Recycled Material %	Recyclable	Returnable	Composite
	Film	Plastic	1.58 g	0.00 %			
	Outer Case Packaging						
	Type	Materials	Weight	Recycled Material %	Recyclable	Returnable	Composite
	Case	Plastic	47.4 g				
	Case	Paper/Cardboard	239 g				
	OTHER INFORMATION	Commodity Code	1905904500				
		Address	Pladis (UK) Ltd pladis, Building 3, Chiswick Park 566 Chiswick High Road W4 5YA Chiswick London England				
			Anna.Stachniak@pladisglobal.com				

The information on the [Erudus System](#) has been supplied by the manufacturers of the products and, whilst the owners of the Erudus System take steps to ensure the information is regularly updated, they give no warranty and no guarantee that the information is accurate. Product information and ingredients may change, please always read product labels carefully in addition to using the information provided by Erudus.

We do not accept liability for any inaccuracies or incorrect information contained on this site.
Please visit <http://www.erudus.com/terms-and-conditions> for full terms and conditions.