

Changed Nov 15, 2024 11:11

Reviewed Nov 15, 2024 11:11

Erudus ID eaebd2af42094622ac98a8157d08d924

Version 2.0

Status Published

11001

BTY Mi 24x57g Std UK Everest

Bounty Milk Chocolate Duo Bar 57g 24x0.06kg

PRODUCT DESCRIPTION

Confectionery Bar

Brand	Mars
Manufacturer Product Code	461665
Product Type	Food
Product Category	Confectionery
Storage Type	Ambient
Erudus ID	eaebd2af42094622ac98a8157d08d924
Specification Type	Generic

Inner Component GTIN 5000159557405

Outer Case GTIN 5000159556569



INGREDIENTS

Ingredient Declaration

Sugar, Desiccated Coconut, Glucose Syrup, Cocoa Butter, Cocoa Mass, Skimmed MILK Powder, Whey Permeate (MILK), Emulsifiers (SOYA Lecithin, E471), MILK Fat, Humectant (Glycerol), Palm Fat, Salt, Milk Chocolate contains Milk Solids 14% minimum, Milk Chocolate contains Vegetable Fats in addition to Cocoa Butter

Ingredient Statements

Milk Chocolate contains Milk Solids 14% minimum. Milk Chocolate contains vegetable fats in addition to coca butter.

ALLERGENS

Product Contains:

Celery/Celery	No	Mustard	No
Cereals Containing Gluten	No	Nuts (Tree)	May Contain
Barley	No	Almond nuts	May Contain
Oats	No	Brazil nuts	May Contain
Rye	No	Cashew nuts	May Contain
Wheat (including Spelt and Khorasan)	No	Hazelnuts	May Contain
Crustacea	No	Macadamia (Queensland) nuts	May Contain
Eggs	No	Pecan nuts	May Contain
Fish	No	Pistachio nuts	May Contain
Lupin	No	Walnuts	May Contain
Milk	Yes	Peanuts	No
Molluscs	No	Sesame Seeds	No
		Soybeans	Yes
		Sulphur Dioxide and Sulphites	No

Risk Source:

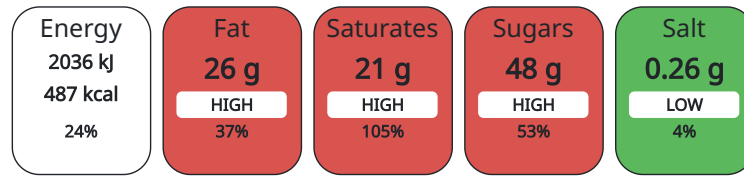
SUPPLEMENTARY
INGREDIENT
INFORMATION
ADDITIVES

GM Protein/DNA No

NUTRITIONAL
INFORMATION AS
SOLD

Product Contains:

Each 100g/ml portion contains:



of your reference intake.

Typical values per 100g/ml : Energy 487kcal / 2036kJ

Nutrient	per 100g	RI per 100g
Energy (kJ)	2036 kJ	24%
Energy (kcal)	487 kcal	24%
Fat	26 g	37%
of which Saturates	21 g	105%
Carbohydrate	60 g	23%
of which Sugars	48 g	53%
Protein	3.8 g	8%
Salt	0.26 g	4%

HANDLING &
STORAGE
INFORMATION

Directions For Use

Ready to eat

Storage Instructions

Keep cool and dry

Shelf Life from Time of Production 217 Days

ORIGIN

Product Country of Origin Netherlands (the)

Origin of the Primary Ingredient

PRODUCT
CHARACTERISTICS
CONFIGURATION

Standards Testing

Case Configuration

Inner Pack Configuration

Total Quantity of Inner Components in 24 Units

Outer Case

PRODUCT
WEIGHTS

Inner Component

Variable Weight Consumer Item No

Inner Component Weight 0.06 kg

Outer Case

Outer Case Gross Weight 1.52 kg

Outer Case Net Weight 1.37 kg

PRODUCT DIMENSIONS

Inner Component	
Inner Component Depth	0 mm
Inner Component Width	0 mm
Inner Component Height	0 mm
Outer Case	
Outer Case Depth	238 mm
Outer Case Width	153 mm
Outer Case Height	63 mm

PALLET INFORMATION

Quantity of Cases Per Pallet Layer	30 Cases	Pallet Height	1.23 MTR
Quantity of Layers Per Pallet	17 Layers	Pallet Gross Weight	810.72 kg
Quantity of Cases Per Pallet	510 Cases		

OTHER INFORMATION CONTACT INFORMATION

Address

Mars
3d Dundee Road
SL1 4LG
Slough
United Kingdom

adrian.holdstock@effem.com

Technical

Sharon Day
sharon.day@effem.com

The information on the [Erudus System](#) has been supplied by the manufacturers of the products and, whilst the owners of the Erudus System take steps to ensure the information is regularly updated, they give no warranty and no guarantee that the information is accurate. Product information and ingredients may change, please always read product labels carefully in addition to using the information provided by Erudus.

We do not accept liability for any inaccuracies or incorrect information contained on this site.
Please visit <http://www.erudus.com/terms-and-conditions> for full terms and conditions.