

Changed Mar 27, 2025 15:43

Reviewed Mar 27, 2025 15:43

Erudus ID 5831a68ae5144c0f9f2db01f26a4e187

Version 1.0

Status Published

11013

MILKYBAR BUTTONS Bag 48x30g

Milkybar White Chocolate Buttons Bag 30g 48x30g

PRODUCT DESCRIPTION

White chocolate pieces.

Brand	Nestle UK
Manufacturer Product Code	12558959
Product Type	Food
Product Category	Confectionery
Storage Type	Ambient
Erudus ID	5831a68ae5144c0f9f2db01f26a4e187
Specification Type	Generic

Inner Component GTIN	50243228
Outer Case GTIN	5000189389441



INGREDIENTS

Ingredient Declaration

sugar, cocoa butter, whole MILK powder, glucose syrup, emulsifier (lecithins), flavouring.

Ingredient Statements

Rainforest Alliance Certified cocoa. Find out more at ra.org IMPORTANT: YOUNG CHILDREN (LESS THAN 4 YEARS) HAVE LIMITED CHEWING ABILITY AND COULD CHOKe ON SMALL SWEETS

ALLERGENS

Product Contains:

Celery/Celeriac	No	Mustard	No
Cereals Containing Gluten	No	Nuts (Tree)	No
Barley	No	Almond nuts	No
Oats	No	Brazil nuts	No
Rye	No	Cashew nuts	No
Wheat (including Spelt and Khorasan)	No	Hazelnuts	No
Crustacea	No	Macadamia (Queensland) nuts	No
Eggs	No	Pecan nuts	No
Fish	No	Pistachio nuts	No
Lupin	No	Walnuts	No
Milk	Yes	Peanuts	No
Molluscs	No	Sesame Seeds	No
		Soybeans	May Contain
		Sulphur Dioxide and Sulphites	No

Risk Source:

Soybeans (Risk Source)	Line
------------------------	------

Additional Allergen Information

Contains: MILK.

**SUPPLEMENTARY
INGREDIENT
INFORMATION**

Palm Oil	No
Hydrogenated Vegetable Oil/Fat	No
GM Protein/DNA	No

ADDITIVES

Product Contains:

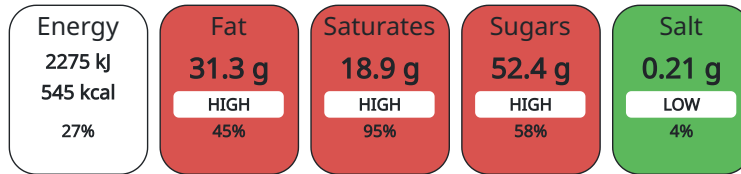
Artificial Antioxidants	No	Artificial Flavourings	No
Artificial Colours	No	Artificial Preservatives	No
Artificial Flavour Enhancers	No	Artificial Sweeteners	No

DIET SUITABILITY

Vegan Diet	No	Vegetarian Diet	Suitable for
Halal Diet	No	Kosher Diet	No

**NUTRITIONAL
INFORMATION AS
SOLD**

Each 100g/ml portion contains:



of your reference intake.

Typical values per 100g/ml : Energy 545kcal / 2275kJ

Nutrient	per 100g	RI per 100g
Energy (kJ)	2275 kJ	27%
Energy (kcal)	545 kcal	27%
Fat	31.3 g	45%
of which Saturates	18.9 g	95%
Carbohydrate	59.4 g	23%
of which Sugars	52.4 g	58%
Fibre	0 g	
Protein	6 g	12%
Salt	0.21 g	4%

Serving Size Description 1 serving = 17 buttons

**NUTRITIONAL
INFORMATION AS
PREPARED**

Nutrient	per 100g/ml prepared	RI per 100g/ml prepared
Energy (kJ)		
Energy (kcal)		
Fat		
of which Saturates		
Carbohydrate		
of which Sugars		
Fibre		
Protein		
Salt		

HANDLING & STORAGE INFORMATION

Directions For Use

Ready to eat

Storage Instructions

Store cool and dry

Shelf Life from Time of Production 365 Days

ORIGIN

Product Country of Origin Great Britain

Origin of the Primary Ingredient United Kingdom

PRODUCT CHARACTERISTICS

Standards Testing

Do you undertake trend analysis of microbiological results?	No	Is shelf life testing undertaken?	No
---	----	-----------------------------------	----

CONFIGURATION

Case Configuration

Inner Pack Configuration

Total Quantity of Inner Components in Outer Case 48 Units

PRODUCT WEIGHTS

Inner Component

Variable Weight Consumer Item No

Inner Component Weight 30 g

Outer Case

Outer Case Gross Weight 1.7 kg

Outer Case Net Weight 1.44 kg

PRODUCT DIMENSIONS

Inner Component

Inner Component Depth 89 mm

Inner Component Width 10 mm

Inner Component Height 125 mm

Outer Case

Outer Case Depth 231 mm

Outer Case Width 182 mm

Outer Case Height 147 mm

PALLET INFORMATION

Quantity of Cases Per Pallet Layer 26 Cases

Pallet Height 1.34 MTR

Quantity of Layers Per Pallet 8 Layers

Pallet Gross Weight 384 kg

Quantity of Cases Per Pallet 208 Cases

PACKAGING

Inner Component Packaging

Type	Materials	Weight	Recycled Material %	Recyclable	Returnable	Composite
Bag	Plastic	1 g				

Outer Case Packaging

Type	Materials	Weight	Recycled Material %	Recyclable	Returnable	Composite
Bag	Plastic	1 g				
Bag	Paper/Cardboard	131 g				

Transport Packaging

Type	Materials	Weight	Recycled Material %	Recyclable	Returnable	Composite
Other	Plastic	2 g				

SAFETY & WARNINGS

Product Health Warning

IMPORTANT: YOUNG CHILDREN (LESS THAN 4 YEARS) HAVE LIMITED CHEWING ABILITY AND COULD CHOKE ON SMALL SWEETS

OTHER
INFORMATION

Manufacturer Comments

Important: Young children (less than 4 years) have limited chewing ability and could choke on small sweets.

CONTACT
INFORMATION

Address

NESTLE UK&I LTD Head Office

Nestle UK&I Ltd

Haxby Road

YO31 8TA1

York

United Kingdom

0800 00 00 30

Complaints

consumer.services@uk.nestle.com

0800 00 00 30 (UK)

The information on the [Erudus System](#) has been supplied by the manufacturers of the products and, whilst the owners of the Erudus System take steps to ensure the information is regularly updated, they give no warranty and no guarantee that the information is accurate. Product information and ingredients may change, please always read product labels carefully in addition to using the information provided by Erudus.

We do not accept liability for any inaccuracies or incorrect information contained on this site.
Please visit <http://www.erudus.com/terms-and-conditions> for full terms and conditions.