

Changed Nov 15, 2024 11:11

Reviewed Nov 15, 2024 11:11

Erudus ID 42c7f6856cd747ab8cc730e96f816725

Version 2.0

Status Published

11014

GLXY MIN 40x42g Bag GB IE MT

Galaxy Minstrels 42gx40 40x0.04kg

PRODUCT DESCRIPTION

Bite Size Chocolate

Brand	Mars
Manufacturer Product Code	183226
Product Type	Food
Product Category	Confectionery
Storage Type	Ambient
Erudus ID	42c7f6856cd747ab8cc730e96f816725
Specification Type	Generic

Inner Component GTIN	5000159001274
Outer Case GTIN	05000159378666



INGREDIENTS

Ingredient Declaration

Sugar, Skimmed MILK Powder, Cocoa Butter, Cocoa Mass, Whey Permeate (MILK), Palm Fat, MILK Fat, Emulsifier (SOYA Lecithin), Dextrin, Colours (Curcumin, Vegetable Carbon, Beetroot Red), Starch, Glazing Agent (Carnauba Wax), Palm Kernel Oil, Milk Chocolate contains Milk Solids 14% minimum, Milk Chocolate contains Vegetable fats in addition to Cocoa Butter

Ingredient Statements

Milk Chocolate contains Milk Solids 14% minimum. Milk Chocolate contains vegetable fats in addition to coca butter.

ALLERGENS

Product Contains:

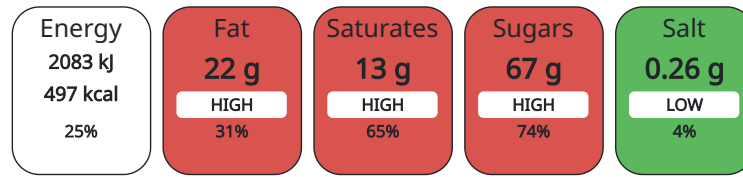
Celery/Celery	No	Mustard	No
Cereals Containing Gluten	No	Nuts (Tree)	No
Barley	No	Almond nuts	No
Oats	No	Brazil nuts	No
Rye	No	Cashew nuts	No
Wheat (including Spelt and Khorasan)	No	Hazelnuts	No
Crustacea	No	Macadamia (Queensland) nuts	No
Eggs	No	Pecan nuts	No
Fish	No	Pistachio nuts	No
Lupin	No	Walnuts	No
Milk	Yes	Peanuts	No
Molluscs	No	Sesame Seeds	No
		Soybeans	Yes
		Sulphur Dioxide and Sulphites	No

SUPPLEMENTARY
INGREDIENT
INFORMATION
ADDITIVES

GM Protein/DNA No

Product Contains:

Each 100g/ml portion contains:



of your reference intake.

Typical values per 100g/ml : Energy 497kcal / 2083kJ

Nutrient	per 100g	RI per 100g
Energy (kJ)	2083 kJ	25%
Energy (kcal)	497 kcal	25%
Fat	22 g	31%
of which Saturates	13 g	65%
Carbohydrate	68 g	26%
of which Sugars	67 g	74%
Protein	5.8 g	12%
Salt	0.26 g	4%

HANDLING &
STORAGE
INFORMATION

Directions For Use

Ready to eat

Storage Instructions

Keep cool and dry

Shelf Life from Time of Production 364 Days

ORIGIN

Product Country of Origin United Kingdom

Origin of the Primary Ingredient

PRODUCT
CHARACTERISTICS
CONFIGURATION

Standards Testing

Case Configuration

Inner Pack Configuration

Total Quantity of Inner Components in 40 Units

Outer Case

PRODUCT
WEIGHTS

Inner Component

Variable Weight Consumer Item No

Inner Component Weight 0.04 kg

Outer Case

Outer Case Gross Weight 1.95 kg

Outer Case Net Weight 1.68 kg

PRODUCT DIMENSIONS

Inner Component	
Inner Component Depth	0 mm
Inner Component Width	0 mm
Inner Component Height	0 mm
Outer Case	
Outer Case Depth	303 mm
Outer Case Width	175 mm
Outer Case Height	125 mm

PALLET INFORMATION

Quantity of Cases Per Pallet Layer	20 Cases	Pallet Height	1.66 MTR
Quantity of Layers Per Pallet	12 Layers	Pallet Gross Weight	497.52 kg
Quantity of Cases Per Pallet	240 Cases		

OTHER INFORMATION CONTACT INFORMATION

Address

Mars
3d Dundee Road
SL1 4LG
Slough
United Kingdom

adrian.holdstock@effem.com

Technical

Sharon Day
sharon.day@effem.com

The information on the [Erudus System](#) has been supplied by the manufacturers of the products and, whilst the owners of the Erudus System take steps to ensure the information is regularly updated, they give no warranty and no guarantee that the information is accurate. Product information and ingredients may change, please always read product labels carefully in addition to using the information provided by Erudus.

We do not accept liability for any inaccuracies or incorrect information contained on this site.
Please visit <http://www.erudus.com/terms-and-conditions> for full terms and conditions.