

Changed Nov 12, 2024 17:09

Reviewed Nov 12, 2024 17:09

Erudus ID 7a2f6b4e69d243dbb545458becaadd11

Version 1.0

Status Published



11017

# Skittles Fruits Sweets Bag 45g

Skittles Fruits Sweets Bag 45g 36x0.05kg

## PRODUCT DESCRIPTION

Chewy /Toffee Candy

Brand	<a href="#">Mars</a>
Manufacturer Product Code	368598
Product Type	Food
Product Category	Confectionery
Storage Type	Ambient
Erudus ID	7a2f6b4e69d243dbb545458becaadd11
Specification Type	Generic

Inner Component GTIN	4009900522120
Outer Case GTIN	4009900522113

## INGREDIENTS

### Ingredient Declaration

Sugar, Glucose Syrup, Palm Fat, Acids Citric Acid, Malic Acid, Dextrin, Maltodextrin, Flavourings, Modified Starch, Colours E162, E163, E170, E160a, E100, E132, E133, Acidity Regulator Trisodium Citrate, Glazing Agent Carnauba Wax

## ALLERGENS

*Product Contains:*

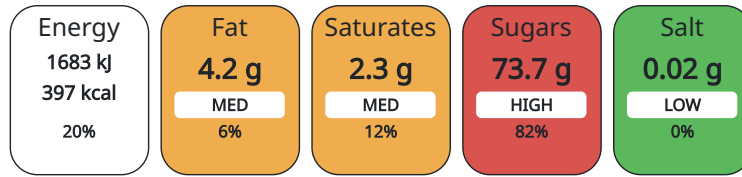
<b>Celery/Celery</b>	No	<b>Mustard</b>	No
<b>Cereals Containing Gluten</b>	No	<b>Nuts (Tree)</b>	No
<b>Barley</b>	No	<b>Almond nuts</b>	No
<b>Oats</b>	No	<b>Brazil nuts</b>	No
<b>Rye</b>	No	<b>Cashew nuts</b>	No
<b>Wheat (including Spelt and Khorasan)</b>	No	<b>Hazelnuts</b>	No
<b>Crustacea</b>	No	<b>Macadamia (Queensland) nuts</b>	No
<b>Eggs</b>	No	<b>Pecan nuts</b>	No
<b>Fish</b>	No	<b>Pistachio nuts</b>	No
<b>Lupin</b>	No	<b>Walnuts</b>	No
<b>Milk</b>	No	<b>Peanuts</b>	No
<b>Molluscs</b>	No	<b>Sesame Seeds</b>	No
		<b>Soybeans</b>	No
		<b>Sulphur Dioxide and Sulphites</b>	No

## SUPPLEMENTARY INGREDIENT INFORMATION ADDITIVES

<b>GM Protein/DNA</b>	No
-----------------------	----

*Product Contains:*

Each 100g/ml portion contains:



of your reference intake.

Typical values per 100g/ml : Energy 397kcal / 1683kJ

Nutrient	per 100g	RI per 100g
Energy (kJ)	1683 kJ	20%
Energy (kcal)	397 kcal	20%
Fat	4.2 g	6%
of which Saturates	2.3 g	12%
Carbohydrate	89.1 g	34%
of which Sugars	73.7 g	82%
Protein	0 g	
Salt	0.02 g	0%

HANDLING &  
STORAGE  
INFORMATION

Directions For Use

Ready to eat

Storage Instructions

Keep cool and dry

Shelf Life from Time of Production 730 Days

ORIGIN

Product Country of Origin Czech Republic

Origin of the Primary Ingredient

PRODUCT  
CHARACTERISTICS  
CONFIGURATION

Standards Testing

Case Configuration

Inner Pack Configuration

Total Quantity of Inner Components in 36 Units

Outer Case

PRODUCT  
WEIGHTS

Inner Component

Variable Weight Consumer Item No

Inner Component Weight 0.05 kg

Outer Case

Outer Case Gross Weight 1.81 kg

Outer Case Net Weight 1.62 kg

PRODUCT  
DIMENSIONS

Inner Component

Inner Component Depth 0 mm

Inner Component Width 0 mm

Inner Component Height 0 mm

Outer Case

Outer Case Depth 242 mm

Outer Case Width 122 mm

Outer Case Height 165 mm

PALLET  
INFORMATION

<b>Quantity of Cases Per Pallet Layer</b>	36 Cases
<b>Quantity of Layers Per Pallet</b>	9 Layers
<b>Quantity of Cases Per Pallet</b>	324 Cases

<b>Pallet Height</b>	1.65 MTR
<b>Pallet Gross Weight</b>	621.49 kg

OTHER  
INFORMATION  
CONTACT  
INFORMATION

**Address**

Mars  
3d Dundee Road  
SL1 4LG  
Slough  
United Kingdom

adrian.holdstock@effem.com

**Technical**

Sharon Day  
sharon.day@effem.com

The information on the [Erudus System](#) has been supplied by the manufacturers of the products and, whilst the owners of the Erudus System take steps to ensure the information is regularly updated, they give no warranty and no guarantee that the information is accurate. Product information and ingredients may change, please always read product labels carefully in addition to using the information provided by Erudus.

We do not accept liability for any inaccuracies or incorrect information contained on this site.  
Please visit <http://www.erudus.com/terms-and-conditions> for full terms and conditions.