

Changed Feb 25, 2025 13:46

Reviewed Feb 25, 2025 13:46

Erudus ID d74592be7e7f415eb64d3c7744cbbc15

Version 2.0

Status Published

12010

# Munchies Milk Chocolate Tube 36x52g

Creamy Milk Chocolate Cubes Encasing A Soft Caramel & Crunchy Biscuit Centre 36x52g

## PRODUCT DESCRIPTION

Milk chocolates with soft caramel (30%) and crisp biscuit centre (6%).

Brand	<a href="#">Nestle UK</a>
Manufacturer Product Code	12269548
Product Type	Food
Product Category	Confectionery
Storage Type	Ambient
Erudus ID	d74592be7e7f415eb64d3c7744cbbc15
Specification Type	Generic

Inner Component GTIN	50249473
Outer Case GTIN	5000189211018



## INGREDIENTS

### Ingredient Declaration

Sugar, Glucose syrup, Whole and skimmed MILK powder, Vegetable fats (Palm, Rapeseed, Shea/ Illipe/ Mango kernel/ Kokum gurgi/ Sal), Invert sugar syrup, Cocoa butter, Cocoa mass, Sweetened condensed skimmed MILK, Lactose and proteins from whey (from MILK), Whey powder (from MILK), WHEAT flour (contains Calcium, Iron, Thiamin and Niacin), Emulsifier (Sunflower lecithin), BARLEY malt extract, Raising agents (Ammonium bicarbonate, Sodium bicarbonate), Salt, Natural vanilla flavouring.

## ALLERGENS

### Product Contains:

Celery/Celeriac	No	Mustard	No
Cereals Containing Gluten	Yes	Nuts (Tree)	No
Barley	Yes	Almond nuts	No
Oats	No	Brazil nuts	No
Rye	No	Cashew nuts	No
Wheat (including Spelt and Khorasan)	Yes	Hazelnuts	No
Crustacea	No	Macadamia (Queensland) nuts	No
Eggs	No	Pecan nuts	No
Fish	No	Pistachio nuts	No
Lupin	No	Walnuts	No
Milk	Yes	Peanuts	No
Molluscs	No	Sesame Seeds	No
		Soybeans	No
		Sulphur Dioxide and Sulphites	No

### Additional Allergen Information

For Allergens see ingredients in BOLD Important. Young children (less than 4 years) have limited chewing ability and could choke on small sweets.

SUPPLEMENTARY  
INGREDIENT  
INFORMATION

Palm Oil	Yes
Hydrogenated Vegetable Oil/Fat	No
GM Protein/DNA	No

ADDITIVES

*Product Contains:*

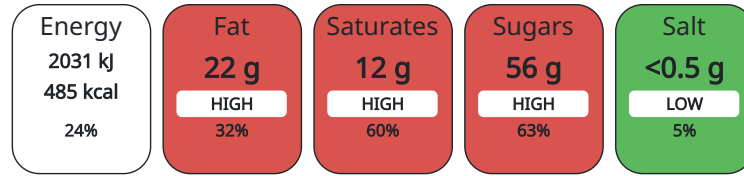
Artificial Colours	No	Artificial Flavourings	No
		Artificial Preservatives	No

DIET SUITABILITY

Vegan Diet	No	Vegetarian Diet	Suitable for
Halal Diet	No	Kosher Diet	No

NUTRITIONAL  
INFORMATION AS  
SOLD

Each 100g/ml portion contains:



of your reference intake.

Typical values per 100g/ml : Energy 485kcal / 2031kj

Nutrient	per 100g	RI per 100g
Energy (kJ)	2031 kJ	24%
Energy (kcal)	485 kcal	24%
Fat	22.4 g	32%
of which Saturates	11.9 g	60%
Carbohydrate	64.5 g	25%
of which Sugars	56.3 g	63%
Fibre	1.5 g	
Protein	5.4 g	11%
Salt	0.3 g	5%

HFSS (HIGH IN  
FAT, SALT AND  
SUGAR)

HFSS Status	Yes
-------------	-----

HANDLING &  
STORAGE  
INFORMATION

**Directions For Use**  
Ready to Eat

**Storage Instructions**  
Store cool and dry

**Shelf Life from Time of Production** 240 Days

ACCREDITATIONS/  
CERTIFICATIONS/  
ASSURANCE  
SCHEMES

FSSC 22000	ISO 14001 (Environmental Management)
ISO 22000 (Food Safety Management)	ISO 45001 (Occupational Health and Safety)
Rainforest Alliance	Roundtable of Sustainable Palm Oil (RSPO)
Sedex	

ORIGIN

Product Country of Origin	United Kingdom
Origin of the Primary Ingredient	

PRODUCT  
CHARACTERISTICS

Standards Testing	
-------------------	--

CONFIGURATION

Case Configuration

Inner Pack Configuration

<b>Total Quantity of Inner Components in Outer Case</b>	36 Units
<b>Is the Outer Case Splittable?</b>	No

PRODUCT WEIGHTS

Inner Component	
<b>Variable Weight Consumer Item</b>	No
<b>Inner Component Weight</b>	52 g
Outer Case	
<b>Outer Case Gross Weight</b>	2.07 kg
<b>Outer Case Net Weight</b>	1.87 kg

PRODUCT DIMENSIONS

Inner Component	
<b>Inner Component Depth</b>	20 mm
<b>Inner Component Width</b>	151 mm
<b>Inner Component Height</b>	20 mm
Outer Case	
<b>Outer Case Depth</b>	161 mm
<b>Outer Case Width</b>	129 mm
<b>Outer Case Height</b>	124 mm

PALLET INFORMATION

<b>Quantity of Cases Per Pallet Layer</b>	47 Cases	<b>Pallet Height</b>	1.28 MTR
<b>Quantity of Layers Per Pallet</b>	9 Layers	<b>Pallet Gross Weight</b>	871 kg
<b>Quantity of Cases Per Pallet</b>	423 Cases		

PACKAGING

Inner Component Packaging							
Type	Materials	Weight	Recycled Material %	Recyclable	Returnable	Composite	
Paper Foil	Paper/Cardboard	0.72 g					
Paper Foil	Aluminium	0.37 g					
Outer Case Packaging							
Type	Materials	Weight	Recycled Material %	Recyclable	Returnable	Composite	
Case	Plastic	0.52 g					
Case	Paper/Cardboard	88 g					
Transport Packaging							
Type	Materials	Weight	Recycled Material %	Recyclable	Returnable	Composite	
Other	Plastic	1.6 g					

MARKETING INFORMATION

**Marketing Description**  
 Creamy milk chocolate cubes encasing a soft caramel & crunchy biscuit centre No artificial colours, flavours & preservatives  
 Perfect for sharing with family or friends Rainforest Alliance Certified cocoa

OTHER INFORMATION

CONTACT  
INFORMATION

**Address**

Nestle UK  
Nestlé UK Ltd  
PO Box 207  
YO91 1WS  
York  
England

[helen.brewer@uk.nestle.com](mailto:helen.brewer@uk.nestle.com)  
0800 00 00 30 (UK)

**Complaints**

[consumer.services@uk.nestle.com](mailto:consumer.services@uk.nestle.com)  
0800 00 00 30 (UK)

The information on the [Erudus System](#) has been supplied by the manufacturers of the products and, whilst the owners of the Erudus System take steps to ensure the information is regularly updated, they give no warranty and no guarantee that the information is accurate. Product information and ingredients may change, please always read product labels carefully in addition to using the information provided by Erudus.

We do not accept liability for any inaccuracies or incorrect information contained on this site.  
Please visit <http://www.erudus.com/terms-and-conditions> for full terms and conditions.