

Changed Oct 10, 2024 16:10

Reviewed Oct 10, 2024 16:10

Erudus ID 80104ce8a3954c6c8d20226569ec50e3

Version 3.1

Status Published

12039

KIT KAT CHUNKY Milk 24x40g

Chocolate Bar, Comprising A Crispy Wafer Covered With A Tasty Layer Of Milk Chocolate 24x40g

PRODUCT DESCRIPTION

Crispy wafer finger covered with thick milk chocolate (68%).

Brand	Nestle UK
Manufacturer Product Code	12405887
Product Type	Food
Product Category	Confectionery
Storage Type	Ambient
Erudus ID	80104ce8a3954c6c8d20226569ec50e3
Specification Type	Generic



Inner Component GTIN 7613037051230

Outer Case GTIN 7613037051247



INGREDIENTS

Ingredient Declaration

Sugar, WHEAT Flour (contains Calcium, Iron, Thiamin and Niacin), Whole MILK Powder, Cocoa Mass, Cocoa Butter, Vegetable Fats (Palm, Shea, Sal), Whey Powder Product (MILK), Skimmed MILK Powder, Emulsifier (Lecithins), Yeast, Raising Agent (Sodium Bicarbonate), Glucose Syrup, Butterfat (MILK), Whey Powder (MILK), Natural Flavourings

ALLERGENS

Product Contains:

Celery/Celery	No	Mustard	No
Cereals Containing Gluten	Yes	Nuts (Tree)	May Contain
Barley	No	Almond nuts	May Contain
Oats	No	Brazil nuts	May Contain
Rye	No	Cashew nuts	May Contain
Wheat (including Spelt and Khorasan)	Yes	Hazelnuts	May Contain
Crustacea	No	Macadamia (Queensland) nuts	May Contain
Eggs	No	Pecan nuts	May Contain
Fish	No	Pistachio nuts	May Contain
Lupin	No	Walnuts	May Contain
Milk	Yes	Peanuts	May Contain
Molluscs	No	Sesame Seeds	No
		Soybeans	No
		Sulphur Dioxide and Sulphites	No

Risk Source:

Additional Allergen Information

May contain PEANUTS and TREE NUTS

SUPPLEMENTARY
INGREDIENT
INFORMATION

Palm Oil	Yes
Hydrogenated Vegetable Oil/Fat	No
GM Protein/DNA	No

ADDITIVES

Product Contains:

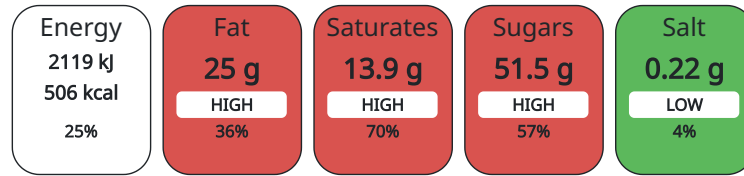
Artificial Antioxidants	No	Artificial Flavourings	No
Artificial Colours	No	Artificial Preservatives	No
Artificial Flavour Enhancers	No	Artificial Sweeteners	No

DIET SUITABILITY

Vegan Diet	No	Vegetarian Diet	Suitable for
Halal Diet	No	Kosher Diet	No

NUTRITIONAL
INFORMATION AS
SOLD

Each 100g/ml portion contains:



of your reference intake.

Typical values per 100g/ml : Energy 506kcal / 2119kJ

Nutrient	per 100g	RI per 100g
Energy (kJ)	2119 kJ	25%
Energy (kcal)	506 kcal	25%
Fat	25 g	36%
of which Saturates	13.9 g	70%
Carbohydrate	62.2 g	24%
of which Sugars	51.5 g	57%
Fibre	2.3 g	
Protein	6.7 g	13%
Salt	0.22 g	4%

HFSS (HIGH IN
FAT, SALT AND
SUGAR)
HANDLING &
STORAGE
INFORMATION

HFSS Status	Yes
--------------------	-----

Directions For Use

Ready to eat

Storage Instructions

Store cool and dry

Shelf Life from Time of Production	270 Days
---	----------

ACCREDITATIONS/
CERTIFICATIONS/
ASSURANCE
SCHEMES
ORIGIN

FSSC 22000	Rainforest Alliance
-------------------	----------------------------

Product Country of Origin	United Kingdom
----------------------------------	----------------

Origin of the Primary Ingredient	
---	--

PRODUCT
CHARACTERISTICS

Standards Testing	
--------------------------	--

	Do you undertake trend analysis of microbiological results?	No	Is shelf life testing undertaken?	No	
CONFIGURATION	Case Configuration		Inner Pack Configuration		
	Total Quantity of Inner Components in Outer Case	24 Units			
	Is the Outer Case Splittable?	Yes			
PRODUCT WEIGHTS	Inner Component				
	Variable Weight Consumer Item	No			
	Inner Component Weight	40 g			
	Outer Case				
	Outer Case Gross Weight	1.08 kg			
	Outer Case Net Weight	0.96 kg			
PRODUCT DIMENSIONS	Inner Component				
	Inner Component Depth	16 mm			
	Inner Component Width	117 mm			
	Inner Component Height	29 mm			
	Outer Case				
	Outer Case Depth	223 mm			
	Outer Case Width	1 mm			
	Outer Case Height	81 mm			
	PALLET INFORMATION	Quantity of Cases Per Pallet Layer	32 Cases	Pallet Height	1.27 MTR
		Quantity of Layers Per Pallet	13 Layers	Pallet Gross Weight	480 kg
Quantity of Cases Per Pallet		416 Cases			
PACKAGING	Inner Component Packaging				
	Type	Materials	Weight	Recycled Material %	
				Recyclable	
				Returnable	
				Composite	
	Paper/Polyethylene	Plastic	1 g		
	Outer Case Packaging				
	Type	Materials	Weight	Recycled Material %	
				Recyclable	
			Returnable		
			Composite		
Case	Plastic	2 g			
Case	Paper/Cardboard	104 g			
OTHER INFORMATION CONTACT INFORMATION	Address		Complaints		
	Nestle UK Nestlé UK Ltd PO Box 207 YO91 1WS York England helen.brewer@uk.nestle.com 0800 00 00 30 (UK)		consumer.services@uk.nestle.com 0800 00 00 30 (UK)		

The information on the [Erudus System](#) has been supplied by the manufacturers of the products and, whilst the owners of the Erudus System take steps to ensure the information is regularly updated, they give no warranty and no guarantee that the information is accurate. Product information and ingredients may change, please always read product labels carefully in addition to using the information provided by Erudus.

We do not accept liability for any inaccuracies or incorrect information contained on this site.
Please visit <http://www.erudus.com/terms-and-conditions> for full terms and conditions.