

Changed Oct 10, 2024 16:09

Reviewed Oct 10, 2024 16:09

Erudus ID 07a13c2d93454e3a8f40b2703319a637

Version 2.0

Status Published

17418

Yorkie Original Milk Chocolate Bar 24x46g

Chunky Milk Chocolate 24x46g

PRODUCT DESCRIPTION

Chunky milk chocolate

Brand	Nestle UK
Manufacturer Product Code	12351299
Product Type	Food
Product Category	Confectionery
Storage Type	Ambient
Erudus ID	07a13c2d93454e3a8f40b2703319a637
Specification Type	Generic



Inner Component GTIN	7613034872630
Outer Case GTIN	07613036249898



INGREDIENTS

Ingredient Declaration

Sugar, Dried Whole MILK, Cocoa Butter, Cocoa Mass, Vegetable Fat (from Palm/Shea/Sal/Illipe/Kokum Gurgi/Mango Kernel), Lactose and Proteins from Whey (from MILK), Whey Powder (from MILK), Butterfat (from MILK), Emulsifier (Sunflower Lecithin), Contains Cocoa Solids 25% minimum, MILK Solids 14% minimum and Vegetable Fat in addition to Cocoa Butter

ALLERGENS

Product Contains:

Celery/Celeriac	No	Mustard	No
Cereals Containing Gluten	May Contain	Nuts (Tree)	No
Barley	No	Almond nuts	No
Oats	No	Brazil nuts	No
Rye	No	Cashew nuts	No
Wheat (including Spelt and Khorasan)	May Contain	Hazelnuts	No
Crustacea	No	Macadamia (Queensland) nuts	No
Eggs	No	Pecan nuts	No
Fish	No	Pistachio nuts	No
Lupin	No	Walnuts	No
Milk	Yes	Peanuts	No
Molluscs	No	Sesame Seeds	No
		Soybeans	No
		Sulphur Dioxide and Sulphites	No

Risk Source:

Additional Allergen Information

May contain GLUTEN.

SUPPLEMENTARY
INGREDIENT
INFORMATION

Palm Oil	Yes
Hydrogenated Vegetable Oil/Fat	No
GM Protein/DNA	No

ADDITIVES

Product Contains:

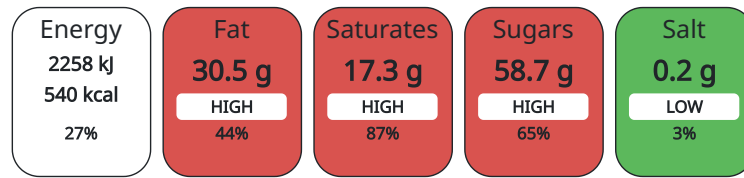
Artificial Antioxidants	No	Artificial Flavourings	No
Artificial Colours	No	Artificial Preservatives	No
Artificial Flavour Enhancers	No	Artificial Sweeteners	No

DIET SUITABILITY

Vegan Diet	No	Vegetarian Diet	Suitable for
Halal Diet	No	Kosher Diet	No

NUTRITIONAL
INFORMATION AS
SOLD

Each 100g/ml portion contains:



of your reference intake.

Typical values per 100g/ml : Energy 540kcal / 2258kJ

Nutrient	per 100g	RI per 100g
Energy (kJ)	2258 kJ	27%
Energy (kcal)	540 kcal	27%
Fat	30.5 g	44%
of which Saturates	17.3 g	87%
Carbohydrate	59.8 g	23%
of which Sugars	58.7 g	65%
Fibre	1.7 g	
Protein	5.8 g	12%
Salt	0.2 g	3%

HFSS (HIGH IN
FAT, SALT AND
SUGAR)
HANDLING &
STORAGE
INFORMATION

HFSS Status	Yes
--------------------	-----

Directions For Use

Ready to Eat

Storage Instructions

Store cool and dry

Shelf Life from Time of Production	365 Days
---	----------

ACCREDITATIONS/
CERTIFICATIONS/
ASSURANCE
SCHEMES
ORIGIN

FSSC 22000	Rainforest Alliance
Roundtable of Sustainable Palm Oil (RSPO)	

Product Country of Origin	United Kingdom
----------------------------------	----------------

Origin of the Primary Ingredient	
---	--

PRODUCT
CHARACTERISTICS

Standards Testing

	Do you undertake trend analysis of microbiological results?	No	Is shelf life testing undertaken?	No			
CONFIGURATION	Case Configuration		Inner Pack Configuration				
	Total Quantity of Inner Components in Outer Case	24 Units					
	Is the Outer Case Splittable?	No					
PRODUCT WEIGHTS	Inner Component						
	Variable Weight Consumer Item	No					
	Inner Component Weight	46 g					
	Outer Case						
	Outer Case Gross Weight	1.3 kg					
	Outer Case Net Weight	1.1 kg					
PRODUCT DIMENSIONS	Inner Component						
	Inner Component Depth	159 mm					
	Inner Component Width	15 mm					
	Inner Component Height	31 mm					
	Outer Case						
	Outer Case Depth	232 mm					
	Outer Case Width	152 mm					
	Outer Case Height	76 mm					
PALLET INFORMATION	Quantity of Cases Per Pallet Layer	30 Cases	Pallet Height	1.23 MTR			
	Quantity of Layers Per Pallet	14 Layers	Pallet Gross Weight	576 kg			
	Quantity of Cases Per Pallet	420 Cases					
PACKAGING	Inner Component Packaging						
	Type	Materials	Weight	Recycled Material %	Recyclable	Returnable	Composite
	Film	Plastic	0.71 g				
	Outer Case Packaging						
	Type	Materials	Weight	Recycled Material %	Recyclable	Returnable	Composite
	Case	Plastic	2.6 g				
	Case	Paper/Cardboard	97 g				
OTHER INFORMATION CONTACT INFORMATION	Address		Complaints				
	Nestle UK		consumer.services@uk.nestle.com				
	Nestlé UK Ltd		0800 00 00 30 (UK)				
	PO Box 207						
	YO91 1WS						
	York						
	England						
	helen.brewer@uk.nestle.com						
	0800 00 00 30 (UK)						

The information on the [Erudus System](#) has been supplied by the manufacturers of the products and, whilst the owners of the Erudus System take steps to ensure the information is regularly updated, they give no warranty and no guarantee that the information is accurate. Product information and ingredients may change, please always read product labels carefully in addition to using the information provided by Erudus.

We do not accept liability for any inaccuracies or incorrect information contained on this site.
Please visit <http://www.erudus.com/terms-and-conditions> for full terms and conditions.