

Changed Feb 27, 2025 10:40

Reviewed Feb 27, 2025 10:40

Erudus ID 34bc6e083852403fa5d76f9a78ad1755

Version 1.0

Status Published

12070

KIT KAT 4 Finger Milk 24x41.5g

Kit Kat 4 Finger Milk Chocolate Bar 41.5g 24x41.5g

PRODUCT DESCRIPTION

Four crispy wafer fingers covered with milk chocolate (66%).

Brand	Nestle UK
Manufacturer Product Code	12585632
Product Type	Food
Product Category	Confectionery
Storage Type	Ambient
Erudus ID	34bc6e083852403fa5d76f9a78ad1755
Specification Type	Generic

Inner Component GTIN	8445291255999
Outer Case GTIN	8445291256002



INGREDIENTS

Ingredient Declaration

sugar, WHEAT flour (contains calcium, iron, thiamin and niacin), whole MILK Powder, cocoa mass, cocoa butter, vegetable fats (palm, shea, palm kernel, sal), whey powder product (MILK), skimmed MILK powder, emulsifier (lecithins), yeast, raising agent (sodium bicarbonate), glucose syrup, butterfat (MILK), whey powder (MILK), natural flavourings.

ALLERGENS

Product Contains:

Celery/Celery	No	Mustard	No
Cereals Containing Gluten	Yes	Nuts (Tree)	No
Barley	No	Almond nuts	No
Oats	No	Brazil nuts	No
Rye	No	Cashew nuts	No
Wheat (including Spelt and Khorasan)	Yes	Hazelnuts	No
Crustacea	No	Macadamia (Queensland) nuts	No
Eggs	No	Pecan nuts	No
Fish	No	Pistachio nuts	No
Lupin	No	Walnuts	No
Milk	Yes	Peanuts	No
Molluscs	No	Sesame Seeds	No
		Soybeans	No
		Sulphur Dioxide and Sulphites	No

SUPPLEMENTARY
INGREDIENT
INFORMATION

Palm Oil	Yes
Hydrogenated Vegetable Oil/Fat	No
GM Protein/DNA	No

ADDITIVES

Product Contains:

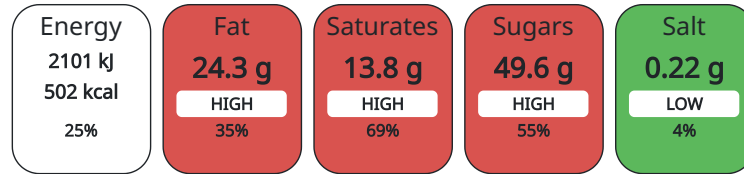
Artificial Colours	No	Artificial Flavourings	No
		Artificial Preservatives	No

DIET SUITABILITY

Vegan Diet	No	Vegetarian Diet	Suitable for
Halal Diet	No	Kosher Diet	No

NUTRITIONAL
INFORMATION AS
SOLD

Each 100g/ml portion contains:



of your reference intake.

Typical values per 100g/ml : Energy 502kcal / 2101kJ

Nutrient	per 100g	RI per 100g
Energy (kJ)	2101 kJ	25%
Energy (kcal)	502 kcal	25%
Fat	24.3 g	35%
of which Saturates	13.8 g	69%
Carbohydrate	62.5 g	24%
of which Sugars	49.6 g	55%
Fibre	2.3 g	
Protein	6.9 g	14%
Salt	0.22 g	4%

Serving Size Description 1 bar = 1 serving

NUTRITIONAL
INFORMATION AS
PREPARED

Nutrient	per 100g/ml prepared	RI per 100g/ml prepared
Energy (kJ)		
Energy (kcal)		
Fat		
of which Saturates		
Carbohydrate		
of which Sugars		
Fibre		
Protein		
Salt		

HANDLING & STORAGE INFORMATION

Directions For Use

Ready to eat

Storage Instructions

Store cool and dry

Shelf Life from Time of Production 365 Days

ACCREDITATIONS/ CERTIFICATIONS/ ASSURANCE SCHEMES ORIGIN

FSSC 22000

Product Country of Origin United Kingdom

Origin of the Primary Ingredient

PRODUCT CHARACTERISTICS

Standards Testing

Do you undertake trend analysis of microbiological results? No

Is shelf life testing undertaken? No

CONFIGURATION

Case Configuration

Inner Pack Configuration

Total Quantity of Inner Components in Outer Case 24 Units

Is the Outer Case Splittable? No

PRODUCT WEIGHTS

Inner Component

Variable Weight Consumer Item No

Inner Component Weight 41.5 g

Outer Case

Outer Case Gross Weight 1.1 kg

Outer Case Net Weight 1 kg

PRODUCT DIMENSIONS

Inner Component

Inner Component Depth 10 mm

Inner Component Width 93 mm

Inner Component Height 63 mm

Outer Case

Outer Case Depth 223 mm

Outer Case Width 145 mm

Outer Case Height 94 mm

PALLET INFORMATION

Quantity of Cases Per Pallet Layer 34 Cases

Pallet Height 1.29 MTR

Quantity of Layers Per Pallet 12 Layers

Pallet Gross Weight 480 kg

Quantity of Cases Per Pallet 408 Cases

PACKAGING

Inner Component Packaging

Type	Materials	Weight	Recycled Material %	Recyclable	Returnable	Composite
Pack	Plastic	66 g				

Outer Case Packaging

Type	Materials	Weight	Recycled Material %	Recyclable	Returnable	Composite
Case	Plastic	1.75 g				
Case	Paper/Cardboard	79.7 g				

OTHER INFORMATION

CONTACT
INFORMATION

Address

Contact Us: Nestle UK Ltd
Nestle UK Ltd
PO Box 207
YO91 1WS
York
United Kingdom

0800 00 00 30

Complaints

consumer.services@uk.nestle.com
0800 00 00 30 (UK)

The information on the [Erudus System](#) has been supplied by the manufacturers of the products and, whilst the owners of the Erudus System take steps to ensure the information is regularly updated, they give no warranty and no guarantee that the information is accurate. Product information and ingredients may change, please always read product labels carefully in addition to using the information provided by Erudus.

We do not accept liability for any inaccuracies or incorrect information contained on this site.
Please visit <http://www.erudus.com/terms-and-conditions> for full terms and conditions.