

Changed Jan 27, 2026 10:51

Reviewed Jan 27, 2026 10:51

Erudus ID 206b36abde4e412193230f59aebe8409

Version 2.0

Status Published

12074

# AERO Bubbly Bar Peppermint 24x36g

Aero Bubbly Bar Peppermint 36g 24x36g

## PRODUCT DESCRIPTION

Smooth milk chocolate filled with peppermint flavoured bubbles. Milk chocolate contains cocoa solids 25% minimum, milk solids 14% minimum and vegetable fats in addition to cocoa butter.

Brand	<a href="#">Nestle UK</a>
Manufacturer Product Code	12481261
Product Type	Food
Product Category	Confectionery
Storage Type	Ambient
Erudus ID	206b36abde4e412193230f59aebe8409
Specification Type	Generic

Inner Component GTIN 7613287430946

Outer Case GTIN 7613287430953



## INGREDIENTS

### Ingredient Declaration

sugar, vegetable fats (palm, shea), whole MILK powder, cocoa butter, whey powder product (MILK), cocoa mass, skimmed MILK powder, butterfat (MILK), emulsifier (lecithins), flavourings, colours (copper complexes of chlorophyllins, curcumin).

## ALLERGENS

### Product Contains:

Celery/Celeriac	No	Mustard	No
Cereals Containing Gluten	No	Nuts (Tree)	May Contain
Barley	No	Almond nuts	May Contain
Oats	No	Brazil nuts	May Contain
Rye	No	Cashew nuts	May Contain
Wheat (including Spelt and Khorasan)	No	Hazelnuts	May Contain
Crustacea	No	Macadamia (Queensland) nuts	May Contain
Eggs	No	Pecan nuts	May Contain
Fish	No	Pistachio nuts	May Contain
Lupin	No	Walnuts	May Contain
Milk	Yes	Peanuts	May Contain
Molluscs	No	Sesame Seeds	No
		Soybeans	May Contain
		Sulphur Dioxide and Sulphites	No

Risk Source:

Tree Nuts (Risk Source)	Line	Almond nuts (Risk Source)	Line
Brazil nuts (Risk Source)	Line	Cashew nuts (Risk Source)	Line
Hazelnuts (Risk Source)	Line	Macadamia nuts (Risk Source)	Line
Pecan nuts (Risk Source)	Line	Pistachio nuts (Risk Source)	Line
Walnuts (Risk Source)	Line	Peanuts (Risk Source)	Line
Soybeans (Risk Source)	Line		

Allergen Statement On Pack

May contain PEANUTS, TREE NUTS and SOYA

Additional Allergen Information

Contains: MILK. May Contain: PEANUTS, TREE NUTS and SOYA

SUPPLEMENTARY INGREDIENT INFORMATION

Palm Oil	Yes
Hydrogenated Vegetable Oil/Fat	No
GM Protein/DNA	No

ADDITIVES

Product Contains:

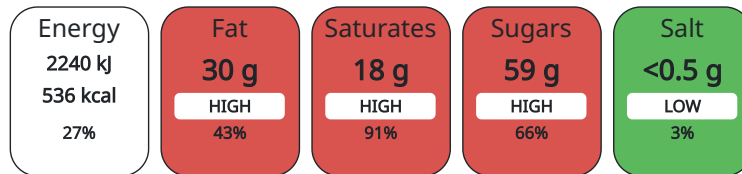
Artificial Antioxidants	No	Artificial Flavourings	No
Artificial Colours	No	Artificial Preservatives	No
Artificial Flavour Enhancers	No	Artificial Sweeteners	No

DIET SUITABILITY

Vegan Diet	No	Vegetarian Diet	Suitable for
Halal Diet	No	Kosher Diet	No

NUTRITIONAL INFORMATION AS SOLD

Each 100g/ml portion contains:



of your reference intake.

Typical values per 100g/ml : Energy 536kcal / 2240kj

Nutrient	per 100g	RI per 100g	per 36g serving	RI per 36g serving
Energy (kj)	2240 kj	27%	806.4	10%
Energy (kcal)	536 kcal	27%	192.96	10%
Fat	30.4 g	43%	10.94 g	16%
of which Saturates	18.1 g	91%	6.52 g	33%
Carbohydrate	59.7 g	23%	21.49 g	8%
of which Sugars	59.4 g	66%	21.38 g	24%
Fibre	1 g		0.36 g	
Protein	5.4 g	11%	1.94 g	4%
Salt	0.16 g	3%	0.06 g	1%

Serving Size 36 g

HFSS (HIGH IN FAT, SALT AND SUGAR)

HFSS Status Yes

HANDLING & STORAGE INFORMATION

Directions For Use

Ready to eat

Storage Instructions

Cool and dry

Shelf Life from Time of Production 274 Days

ACCREDITATIONS/ CERTIFICATIONS/ ASSURANCE SCHEMES ORIGIN

FSSC 22000

Product Country of Origin Czech Republic

Origin of the Primary Ingredient Not Applicable

PRODUCT CHARACTERISTICS

Standards Testing

Do you undertake trend analysis of microbiological results? No

Is shelf life testing undertaken? No

CONFIGURATION

Case Configuration

Inner Pack Configuration

Total Quantity of Inner Components in Outer Case 24 Units

PRODUCT WEIGHTS

Inner Component

Variable Weight Consumer Item No

Inner Component Weight 36 g

Outer Case

Outer Case Gross Weight 1 kg

Outer Case Net Weight 0.86 kg

PRODUCT DIMENSIONS

Inner Component

Inner Component Depth 15 mm

Inner Component Width 115 mm

Inner Component Height 47 mm

Outer Case

Outer Case Depth 230 mm

Outer Case Width 158 mm

Outer Case Height 95 mm

PALLET INFORMATION

Quantity of Cases Per Pallet Layer 30 Cases

Pallet Height 1.11 MTR

Quantity of Layers Per Pallet 10 Layers

Pallet Gross Weight 329 kg

Quantity of Cases Per Pallet 300 Cases

PACKAGING

Inner Component Packaging

Type	Materials	Weight	Recycled Material %	Recyclable	Returnable	Composite
Film	Plastic	0.9 g				

Outer Case Packaging

Type	Materials	Weight	Recycled Material %	Recyclable	Returnable	Composite
Case	Paper/Cardboard	109.4 g				

OTHER INFORMATION

CONTACT  
INFORMATION

**Address**

Contact Us: Nestle UK Ltd  
Nestle UK Ltd  
PO Box 207  
YO91 1WS  
York  
United Kingdom  
  
0800 00 00 30

**Complaints**

consumer.services@uk.nestle.com  
0800 00 00 30 (UK)

The information on the [Erudus System](#) has been supplied by the manufacturers of the products and, whilst the owners of the Erudus System take steps to ensure the information is regularly updated, they give no warranty and no guarantee that the information is accurate. Product information and ingredients may change, please always read product labels carefully in addition to using the information provided by Erudus.

We do not accept liability for any inaccuracies or incorrect information contained on this site.  
Please visit <http://www.erudus.com/terms-and-conditions> for full terms and conditions.