

Changed Nov 06, 2024 13:44

Reviewed Nov 06, 2024 13:44

Erudus ID 1f782818cace4517af5541369a5bf141

Version 2.1

Status Published

12085

POLO Tube 32x34.0g

Pressed Mints 32x34g

PRODUCT DESCRIPTION

Pressed mints

Brand	Nestle UK
Manufacturer Product Code	12357472
Product Type	Food
Product Category	Confectionery
Storage Type	Ambient
Erudus ID	1f782818cace4517af5541369a5bf141
Specification Type	Generic



Inner Component GTIN	50189779
Outer Case GTIN	07613036339452



INGREDIENTS

Ingredient Declaration

Sugar, Glucose Syrup, Modified starch, Stearic Acid, Mint Oils.

ALLERGENS

Product Contains:

Celery/Celeriac	No	Mustard	No
Cereals Containing Gluten	No	Nuts (Tree)	No
Barley	No	Almond nuts	No
Oats	No	Brazil nuts	No
Rye	No	Cashew nuts	No
Wheat (including Spelt and Khorasan)	No	Hazelnuts	No
Crustacea	No	Macadamia (Queensland) nuts	No
Eggs	No	Pecan nuts	No
Fish	No	Pistachio nuts	No
Lupin	No	Walnuts	No
Milk	No	Peanuts	No
Molluscs	No	Sesame Seeds	No
		Soybeans	No
		Sulphur Dioxide and Sulphites	No

SUPPLEMENTARY INGREDIENT INFORMATION

Palm Oil	No
Hydrogenated Vegetable Oil/Fat	No
GM Protein/DNA	No

ADDITIVES

Product Contains:

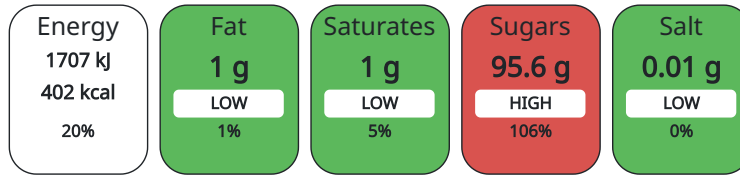
Artificial Antioxidants	No	Artificial Flavourings	No
Artificial Colours	No	Artificial Preservatives	No
Artificial Flavour Enhancers	No	Artificial Sweeteners	No

DIET SUITABILITY

Vegan Diet	Suitable for	Vegetarian Diet	Suitable for
Halal Diet	No	Kosher Diet	No

NUTRITIONAL INFORMATION AS SOLD

Each 100g/ml portion contains:



of your reference intake.

Typical values per 100g/ml : Energy 402kcal / 1707kJ

Nutrient	per 100g	RI per 100g
Energy (kJ)	1707 kJ	20%
Energy (kcal)	402 kcal	20%
Fat	1 g	1%
of which Saturates	1 g	5%
Carbohydrate	98.1 g	38%
of which Sugars	95.6 g	106%
Fibre	0 g	
Protein	< 0.5 g	1%
Salt	0.01 g	0%

Serving Size Description Per 3 pieces

HANDLING & STORAGE INFORMATION

Directions For Use

Ready to eat

Storage Instructions

Store in a cool, dry place.

Shelf Life from Time of Production 365 Days

ORIGIN

Product Country of Origin United Kingdom

Origin of the Primary Ingredient

PRODUCT CHARACTERISTICS

Standards Testing

Do you undertake trend analysis of microbiological results?	No	Is shelf life testing undertaken?	No
---	----	-----------------------------------	----

CONFIGURATION

Case Configuration Inner Pack Configuration

Total Quantity of Inner Components in Outer Case 32 Units

Outer Case

Is the Outer Case Splittable? No

PRODUCT WEIGHTS

Inner Component	
Variable Weight Consumer Item	No
Inner Component Weight	34 g
Outer Case	
Outer Case Gross Weight	1.16 kg
Outer Case Net Weight	1.09 kg

PRODUCT DIMENSIONS

Inner Component	
Inner Component Depth	19 mm
Inner Component Width	119 mm
Inner Component Height	19 mm
Outer Case	
Outer Case Depth	169 mm
Outer Case Width	122 mm
Outer Case Height	70 mm

PALLET INFORMATION

Quantity of Cases Per Pallet Layer	83 Cases	Pallet Height	1.26 MTR
Quantity of Layers Per Pallet	9 Layers	Pallet Gross Weight	901 kg
Quantity of Cases Per Pallet	747 Cases		

PACKAGING

Inner Component Packaging						
Type	Materials	Weight	Recycled Material %	Recyclable	Returnable	Composite
Paper Foil	Plastic	5.8 g				
Paper Foil	Paper/Cardboard	23.64 g				
Outer Case Packaging						
Type	Materials	Weight	Recycled Material %	Recyclable	Returnable	Composite
Case	Plastic	5.8 g				
Case	Paper/Cardboard	23.64 g				

OTHER INFORMATION

Manufacturer Comments
 Important: Young children (less than 4 years) have limited chewing ability and could choke on small sweets.

CONTACT INFORMATION

Address	Complaints
Nestle UK	consumer.services@uk.nestle.com
Nestlé UK Ltd	0800 00 00 30 (UK)
PO Box 207	
YO91 1WS	
York	
England	
helen.brewer@uk.nestle.com	
0800 00 00 30 (UK)	

The information on the [Erudus System](#) has been supplied by the manufacturers of the products and, whilst the owners of the Erudus System take steps to ensure the information is regularly updated, they give no warranty and no guarantee that the information is accurate. Product information and ingredients may change, please always read product labels carefully in addition to using the information provided by Erudus.

We do not accept liability for any inaccuracies or incorrect information contained on this site.
 Please visit <http://www.erudus.com/terms-and-conditions> for full terms and conditions.