

12086

# AERO Bubbly Bar Milk 24x36g

Aero Bubbly Bar Milk 36g 24x36g

## PRODUCT DESCRIPTION

Smooth bubbly milk chocolate. Milk chocolate contains cocoa solids 25% minimum, milk solids 14% minimum and vegetable fat in addition to cocoa butter.

Brand	<a href="#">Nestle UK</a>
Manufacturer Product Code	12351360
Product Type	Food
Product Category	Confectionery
Storage Type	Ambient
Erudus ID	c2b14ddd716f4da782a3eeb3a3aaaf32
Specification Type	Legacy

Inner Component GTIN	7613035052024
Outer Case GTIN	7613036249904



## INGREDIENTS

### Ingredient Declaration

sugar, cocoa butter, dried whole MILK, cocoa mass, butterfat (from MILK), vegetable fats (palm, shea), LACTOSE and proteins from whey (from MILK), whey powder (from MILK), skimmed MILK powder, emulsifier (lecithins).

## ALLERGENS

### Product Contains:

Celery/Celeriac	No	Mustard	No
Cereals Containing Gluten	No	Nuts (Tree)	May Contain
Barley	No	Almond nuts	May Contain
Oats	No	Brazil nuts	May Contain
Rye	No	Cashew nuts	May Contain
Wheat (including Spelt and Khorasan)	No	Hazelnuts	May Contain
Gluten content <20ppm	Yes	Macadamia (Queensland) nuts	May Contain
Crustacea	No	Pecan nuts	May Contain
Eggs	No	Pistachio nuts	May Contain
Fish	No	Walnuts	May Contain
Lupin	No	Peanuts	May Contain
Milk	Yes	Sesame Seeds	No
Molluscs	No	Soybeans	May Contain
		Sulphur Dioxide and Sulphites	No

### Risk Source:

### Additional Allergen Information

Contains: MILK. May contain PEANUTS, TREE NUTS and SOYA

SUPPLEMENTARY  
INGREDIENT  
INFORMATION

Palm Oil	Yes
Hydrogenated Vegetable Oil/Fat	No
GM Protein/DNA	No

ADDITIVES

*Product Contains:*

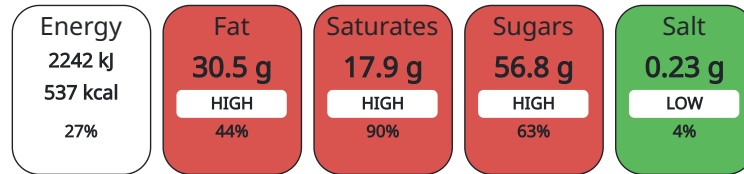
Artificial Antioxidants	No	Artificial Flavourings	No
Artificial Colours	No	Artificial Preservatives	No
Artificial Flavour Enhancers	No	Artificial Sweeteners	No

DIET SUITABILITY

Suitable for Coeliacs	Yes	Halal Diet	No
Kosher Diet	No	Vegetarian Diet	Suitable for
Vegan Diet	No		

NUTRITIONAL  
INFORMATION

Each 100g/ml portion contains:



of your reference intake.

Typical values per 100g/ml : Energy 537kcal / 2242kJ

Nutrient	per 100g/ml	RI per 100g/ml
Energy (kJ)	2242 kJ	27%
Energy (kcal)	537 kcal	27%
Fat	30.5 g	44%
of which Saturates	17.9 g	90%
Carbohydrate	57.8 g	22%
of which Sugars	56.8 g	63%
Fibre	1.9 g	
Protein	6.8 g	14%
Salt	0.23 g	4%

HFSS (HIGH IN  
FAT, SALT AND  
SUGAR)  
HANDLING &  
STORAGE  
INFORMATION

HFSS Status	Yes
Directions For Use	Ready to eat
Storage Instructions	Store cool and dry
Shelf Life from Time of Production	365 Days

ACCREDITATIONS/  
CERTIFICATIONS/  
ASSURANCE  
SCHEMES  
ORIGIN

FSSC 22000	
Product Country of Origin	United Kingdom

PRODUCT  
CHARACTERISTICS

Standards Testing			
Do you undertake trend analysis of microbiological results?	No	Is shelf life testing undertaken?	No

CONFIGURATION

Case Configuration

Inner Pack Configuration

**Total Quantity of Inner Components in Outer Case** 24 Units

PRODUCT WEIGHTS

Inner Component  
**Variable Weight Consumer Item** No  
**Inner Component Weight** 36 g  
**Weight/Volume**  
 36g net  
 Outer Case  
**Outer Case Gross Weight** 1.05 kg  
**Outer Case Net Weight** 0.86 kg

PRODUCT DIMENSIONS

Inner Component  
**Inner Component Depth** 15 mm  
**Inner Component Width** 114 mm  
**Inner Component Height** 46 mm  
 Outer Case  
**Outer Case Depth** 228 mm  
**Outer Case Width** 160 mm  
**Outer Case Height** 98 mm

PALLET INFORMATION

<b>Quantity of Cases Per Pallet Layer</b>	30 Cases	<b>Pallet Height</b>	1.34 MTR
<b>Quantity of Layers Per Pallet</b>	12 Layers	<b>Pallet Gross Weight</b>	407 kg
<b>Quantity of Cases Per Pallet</b>	360 Cases		

PACKAGING

Inner Component Packaging

Type	Materials	Weight	Recycled Material %	Recyclable	Returnable	Composite
Film	Plastic	1.54 g				

Outer Case Packaging

Type	Materials	Weight	Recycled Material %	Recyclable	Returnable	Composite
Case	Paper/Cardboard	145.44 g				

OTHER INFORMATION CONTACT INFORMATION

**Address**  
 Nestle UK  
 Nestlé UK Ltd  
 PO Box 207  
 YO91 1WS  
 York  
 England

helen.brewer@uk.nestle.com  
 0800 00 00 30 (UK)

**Complaints**  
 consumer.services@uk.nestle.com  
 0800 00 00 30 (UK)

The information on the [Erudus System](#) has been supplied by the manufacturers of the products and, whilst the owners of the Erudus System take steps to ensure the information is regularly updated, they give no warranty and no guarantee that the information is accurate. Product information and ingredients may change, please always read product labels carefully in addition to using the information provided by Erudus.

We do not accept liability for any inaccuracies or incorrect information contained on this site. Please visit <http://www.erudus.com/terms-and-conditions> for full terms and conditions.