

Changed Jan 23, 2025 12:21

Reviewed Jan 23, 2025 12:21

Erudus ID 98be4424f0ec477397358a5e49b79940

Version 1.0

Status Published

12089

MALTESERS std pouch 93g 12x1

Maltesers Std Pouch 93g 12x97.49g

PRODUCT DESCRIPTION

Bite Size Chocolate

Brand	Mars
Manufacturer Product Code	476104
Product Type	Food
Product Category	Confectionery
Storage Type	Ambient
Erudus ID	98be4424f0ec477397358a5e49b79940
Specification Type	Generic

Inner Component GTIN 5000159571401

Outer Case GTIN 5000159571418



INGREDIENTS

Ingredient Declaration

Ingredients: sugar, skimmed **milk** powder, cocoa butter, glucose syrup, **barley** malt extract, cocoa mass, palm fat, whey permeate (**milk**), **milk** fat, emulsifiers (**soya** lecithin, E492), palm kernel fat, **wheat** flour, raising agents (E341, E501, E500), **wheat** gluten, whey powder (**milk**), salt, glazing agent (pectins).

Ingredient Statements

Milk chocolate contains milk solids 14% minimum.

ALLERGENS

Product Contains:

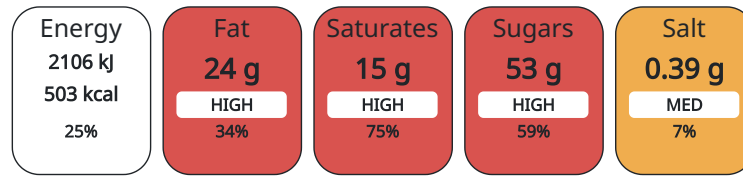
Celery/Celeriac	No	Mustard	No
Cereals Containing Gluten	Yes	Nuts (Tree)	No
Barley	Yes	Almond nuts	No
Oats	No	Brazil nuts	No
Rye	No	Cashew nuts	No
Wheat (including Spelt and Khorasan)	Yes	Hazelnuts	No
Crustacea	No	Macadamia (Queensland) nuts	No
Eggs	No	Pecan nuts	No
Fish	No	Pistachio nuts	No
Lupin	No	Walnuts	No
Milk	Yes	Peanuts	No
Molluscs	No	Sesame Seeds	No
		Soybeans	Yes
		Sulphur Dioxide and Sulphites	No

SUPPLEMENTARY
INGREDIENT
INFORMATION
ADDITIVES

GM Protein/DNA No

Product Contains:

Each 100g/ml portion contains:



of your reference intake.

Typical values per 100g/ml : Energy 503kcal / 2106kJ

Nutrient	per 100g	RI per 100g
Energy (kJ)	2106 kJ	25%
Energy (kcal)	503 kcal	25%
Fat	24 g	34%
of which Saturates	15 g	75%
Carbohydrate	62 g	24%
of which Sugars	53 g	59%
Protein	8.3 g	17%
Salt	0.39 g	7%

HANDLING &
STORAGE
INFORMATION

Directions For Use

Ready to eat

Storage Instructions

Keep cool and dry

Shelf Life from Time of Production 364 Days

ORIGIN

Product Country of Origin Great Britain

Origin of the Primary Ingredient

PRODUCT
CHARACTERISTICS
CONFIGURATION

Standards Testing

Case Configuration

Inner Pack Configuration

Total Quantity of Inner Components in 12 Units

Outer Case

PRODUCT
WEIGHTS

Inner Component

Variable Weight Consumer Item No

Inner Component Weight 97.49 g

Outer Case

Outer Case Gross Weight 1.4 kg

Outer Case Net Weight 1.12 kg

PRODUCT DIMENSIONS

Inner Component	
Inner Component Depth	48 mm
Inner Component Width	130 mm
Inner Component Height	160 mm
Outer Case	
Outer Case Depth	421 mm
Outer Case Width	141 mm
Outer Case Height	165 mm

PALLET INFORMATION

Quantity of Cases Per Pallet Layer	18 Cases	Pallet Height	1.65 MTR
Quantity of Layers Per Pallet	9 Layers	Pallet Gross Weight	256.8 kg
Quantity of Cases Per Pallet	162 Cases		

OTHER INFORMATION CONTACT INFORMATION

Address

Mars
3d Dundee Road
SL1 4LG
Slough
United Kingdom

adrian.holdstock@effem.com

Technical

Sharon Day
sharon.day@effem.com

The information on the [Erudus System](#) has been supplied by the manufacturers of the products and, whilst the owners of the Erudus System take steps to ensure the information is regularly updated, they give no warranty and no guarantee that the information is accurate. Product information and ingredients may change, please always read product labels carefully in addition to using the information provided by Erudus.

We do not accept liability for any inaccuracies or incorrect information contained on this site.
Please visit <http://www.erudus.com/terms-and-conditions> for full terms and conditions.