

Changed Apr 09, 2025 09:53

Reviewed Apr 09, 2025 09:53

Erudus ID b53d671578d64735a51c334879596819

Version 3.0

Status Published



12168

Monster Energy Lando Norris Zero Sugar 500ml x12

Monster Energy Lando Norris Zero Sugar 12x0.5kg

PRODUCT DESCRIPTION

Monster Energy Lando Norris Zero Sugar 500ml x12 Can

Brand	Coca-Cola
Manufacturer Product Code	644370
Product Type	Drink
Product Category	Drinks - General
Storage Type	Ambient
Erudus ID	b53d671578d64735a51c334879596819
Specification Type	Drinks

Inner Component GTIN	05056784906477
Outer Case GTIN	05056784906484
Pallet GTIN	05056784906491

INGREDIENTS

Ingredient Declaration

Carbonated Water, Flavour Enhancer (Erythritol), Acid (Citric Acid), Taurine (0.4%), Acidity Regulator (Sodium Citrates), Flavourings, Panax Ginseng Root Extract (0.08%), Preservatives (Potassium Sorbate, Sodium Benzoate), Caffeine (0.03%), Sweetener (Sucralose), L-Carnitine L-Tartrate (0.02%), Vitamins (B3, B6, B2, B12), Stabiliser (Glycerol Esters of Wood Rosins), Guarana Seed Extract (0.002%), Inositol.

ALLERGENS

Product Contains:

Celery/Celery	No	Mustard	No
Cereals Containing Gluten	No	Nuts (Tree)	No
Barley	No	Almond nuts	No
Oats	No	Brazil nuts	No
Rye	No	Cashew nuts	No
Wheat (including Spelt and Khorasan)	No	Hazelnuts	No
Crustacea	No	Macadamia (Queensland) nuts	No
Eggs	No	Pecan nuts	No
Fish	No	Pistachio nuts	No
Lupin	No	Walnuts	No
Milk	No	Peanuts	No
Molluscs	No	Sesame Seeds	No
		Soybeans	No
		Sulphur Dioxide and Sulphites	No

SUPPLEMENTARY INGREDIENT INFORMATION

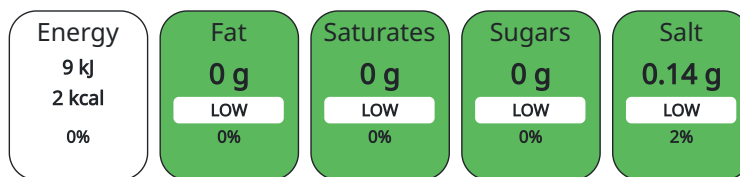
GM Protein/DNA	No
-----------------------	----

ADDITIVES

Product Contains:

NUTRITIONAL INFORMATION AS SOLD

Each 100g/ml portion contains:



of your reference intake.

Typical values per 100g/ml : Energy 2kcal / 9kJ

Nutrient	per 100ml	RI per 100ml
Energy (kJ)	9 kJ	0%
Energy (kcal)	2 kcal	0%
Fat	0 g	
of which Saturates	0 g	
Carbohydrate	0.7 g	0%
of which Sugars	0 g	
Protein	0 g	
Salt	0.14 g	2%

VITAMINS AND MINERALS AS SOLD

Nutrient	per 100ml	RI per 100ml
Riboflavin (B2)	0.7 mg	50%
Niacin (B3)	8.5 mg	53%
Vitamin B6	0.8 mg	57%
Vitamin B12	2.5 µg	100%

HFSS (HIGH IN FAT, SALT AND SUGAR)

HFSS Status	No
HFSS Score	0

HANDLING & STORAGE INFORMATION

Directions For Use
Refrigerate after opening and consume within 3 days

Storage Instructions
Store cool and dry.

Shelf Life from Time of Production 720 Days

ORIGIN

Product Country of Origin	Great Britain
Origin of the Primary Ingredient	Great Britain

PRODUCT CHARACTERISTICS CONFIGURATION

Standards Testing	
Case Configuration	Inner Pack Configuration
Total Quantity of Inner Components in Outer Case	12 Units
Is the Outer Case Splittable?	No

PRODUCT WEIGHTS

Inner Component	
Inner Component Weight	0.5 kg
Outer Case	
Outer Case Gross Weight	6.3 kg
Outer Case Net Weight	6.03 kg

PRODUCT DIMENSIONS

Inner Component	
Inner Component Depth	66.5 mm
Inner Component Width	66.5 mm
Inner Component Height	168.3 mm
Outer Case	
Outer Case Depth	271 mm
Outer Case Width	205 mm
Outer Case Height	171 mm

PALLET INFORMATION

Quantity of Cases Per Pallet Layer	8 Cases	Pallet Height	1.53 MTR
Quantity of Layers Per Pallet	22 Layers	Pallet Gross Weight	1139.17 kg
Quantity of Cases Per Pallet	176 Cases		

PACKAGING

Inner Component Packaging						
Type	Materials	Weight	Recycled Material %	Recyclable	Returnable	Composite
Can	Aluminium	30 g				
Outer Case Packaging						
Type	Materials	Weight	Recycled Material %	Recyclable	Returnable	Composite
Tray	Paper/Cardboard	55.357 g				
Tray	Plastic	15.595 g				

OTHER INFORMATION CONTACT INFORMATION

Address	Technical
Coca-Cola	Data Queries
Coca-Cola Europacific Partners Great Britain Limited	npidataexchange@ccep.com
Pemberton House, Bakers Road	
UB8 1EZ	
Uxbridge	
United Kingdom	
contact@ccep.com	
08081000000	

The information on the [Erudus System](#) has been supplied by the manufacturers of the products and, whilst the owners of the Erudus System take steps to ensure the information is regularly updated, they give no warranty and no guarantee that the information is accurate. Product information and ingredients may change, please always read product labels carefully in addition to using the information provided by Erudus.

We do not accept liability for any inaccuracies or incorrect information contained on this site. Please visit <http://www.erudus.com/terms-and-conditions> for full terms and conditions.