

Changed Mar 12, 2026 12:12

Reviewed Mar 12, 2026 12:12

Erudus ID 823e1608a8f04efaa139fbe308d1e342

Version 3.0

Status Published

12189

McVitie's Milk Chocolate Hobnobs 12 x 262g

Hobnobs Milk Chocolate 12x262g

PRODUCT DESCRIPTION

Milk Chocolate Oaty, Nobbly Biscuits.

Brand	Pladis (UK) Ltd
Manufacturer Product Code	26146
Product Type	Food
Product Category	Biscuits, Wafers and Crackers
Storage Type	Ambient
Erudus ID	823e1608a8f04efaa139fbe308d1e342
Specification Type	Bakery Products

Inner Component GTIN 5000168176833

Outer Case GTIN 5000168176826



INGREDIENTS

Ingredient Declaration

Rolled OATS (30%), MILK Chocolate (25%) [Sugar, Cocoa Butter, Cocoa Mass, Dried Skimmed MILK, Dried Whey (MILK), Butter Oil (MILK), Vegetable Fats (Palm, Shea), Emulsifiers (SOYA Lecithin, E476), Natural Flavouring], Wholemeal WHEAT Flour (16%), Sugar, Vegetable Oil (Palm), Glucose-Fructose Syrup, Raising Agents (Sodium Bicarbonate, Ammonium Bicarbonate), Salt.

ALLERGENS

Product Contains:

Celery/Celeriac	No	Mustard	No
Cereals Containing Gluten	Yes	Nuts (Tree)	No
Barley	No	Almond nuts	No
Oats	Yes	Brazil nuts	No
Rye	No	Cashew nuts	No
Wheat (including Spelt and Khorasan)	Yes	Hazelnuts	No
Crustacea	No	Macadamia (Queensland) nuts	No
Eggs	No	Pecan nuts	No
Fish	No	Pistachio nuts	No
Lupin	No	Walnuts	No
Milk	Yes	Peanuts	No
Molluscs	No	Sesame Seeds	No
		Soybeans	Yes
		Sulphur Dioxide and Sulphites	No

Additional Allergen Information

Contains: Milk, Soya, Gluten (Oats, Wheat). The additional may contain allergens (Rye, Kamut, Spelt, Barley) relate to the inherent risk in the supply chain from different cereals from field to manufacturing.

SUPPLEMENTARY
INGREDIENT
INFORMATION

Palm Oil	Yes
Hydrogenated Vegetable Oil/Fat	No
GM Protein/DNA	No

ADDITIVES

Product Contains:

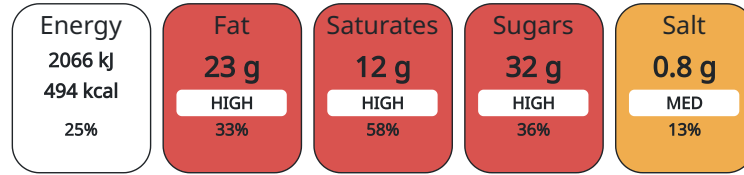
Artificial Colours	No	Artificial Flavourings	No
--------------------	----	------------------------	----

DIET SUITABILITY

Vegan Diet	No	Vegetarian Diet	Suitable for
Halal Diet	No	Kosher Diet	No

NUTRITIONAL
INFORMATION AS
SOLD

Each 100g/ml portion contains:



of your reference intake.

Typical values per 100g/ml : Energy 494kcal / 2066kJ

Nutrient	per 100g	RI per 100g
Energy (kJ)	2066 kJ	25%
Energy (kcal)	494 kcal	25%
Fat	23.3 g	33%
of which Saturates	11.5 g	58%
Carbohydrate	61.4 g	24%
of which Sugars	32.3 g	36%
Fibre	5.2 g	
Protein	7 g	14%
Salt	0.75 g	13%

HFSS (HIGH IN
FAT, SALT AND
SUGAR)
HANDLING &
STORAGE
INFORMATION

HFSS Status	Yes
-------------	-----

Directions For Use

Ready to eat

Storage Instructions

Store in a cool, dry place. Once opened store in an airtight container.

Shelf Life from Time of Production	252 Days
------------------------------------	----------

ACCREDITATIONS/
CERTIFICATIONS/
ASSURANCE
SCHEMES
ORIGIN

BRCGS Certified	Roundtable of Sustainable Palm Oil (RSPO)
-----------------	---

Product Country of Origin	United Kingdom
---------------------------	----------------

Origin of the Primary Ingredient	United Kingdom
----------------------------------	----------------

PRODUCT
CHARACTERISTICS

Standards Testing			
Do you undertake trend analysis of microbiological results?	No	Is shelf life testing undertaken?	No

CONFIGURATION

Case Configuration	Inner Pack Configuration
Total Quantity of Inner Components in Outer Case	12 Units

PRODUCT WEIGHTS

Inner Component	
Variable Weight Consumer Item	No
Inner Component Weight	262 g
Outer Case	
Outer Case Gross Weight	3.5 kg
Outer Case Net Weight	3.14 kg

PRODUCT DIMENSIONS

Inner Component	
Inner Component Depth	67 mm
Inner Component Width	143 mm
Inner Component Height	67 mm
Outer Case	
Outer Case Depth	278 mm
Outer Case Width	158 mm
Outer Case Height	213 mm

PALLET INFORMATION

Quantity of Cases Per Pallet Layer	24 Cases	Pallet Height	1.23 MTR
Quantity of Layers Per Pallet	5 Layers	Pallet Gross Weight	450 kg
Quantity of Cases Per Pallet	120 Cases		

PACKAGING

Inner Component Packaging						
Type	Materials	Weight	Recycled Material %	Recyclable	Returnable	Composite
Film	Plastic	2.27 g				
Outer Case Packaging						
Type	Materials	Weight	Recycled Material %	Recyclable	Returnable	Composite
Case	Plastic	27.24 g				
Case	Paper/Cardboard	143 g				

OTHER INFORMATION CONTACT INFORMATION

Address
 Pladis (UK) Ltd
 pladis, Building 3, Chiswick Park
 566 Chiswick High Road
 W4 5YA
 Chiswick
 London
 England

Anna.Stachniak@pladisglobal.com

The information on the [Erudus System](#) has been supplied by the manufacturers of the products and, whilst the owners of the Erudus System take steps to ensure the information is regularly updated, they give no warranty and no guarantee that the information is accurate. Product information and ingredients may change, please always read product labels carefully in addition to using the information provided by Erudus.

We do not accept liability for any inaccuracies or incorrect information contained on this site.
 Please visit <http://www.erudus.com/terms-and-conditions> for full terms and conditions.