

Changed Aug 08, 2025 13:05

Reviewed Aug 08, 2025 13:05

Erudus ID 31751df6dfd34bce894195ed1fc8941b

Version 1.0

Status Published

12213

# McVitie's Jaffa Cakes Snackpack CDU 20 x 4

McVitie's Jaffa Cakes 20x4

## PRODUCT DESCRIPTION

Light Sponge Cakes with Dark Crackly Chocolate and a Tangy Orangey Centre.

Brand	<a href="#">Pladis (UK) Ltd</a>
Manufacturer Product Code	35031
Product Type	Food
Product Category	Biscuits, Wafers and Crackers
Storage Type	Ambient
Erudus ID	31751df6dfd34bce894195ed1fc8941b
Specification Type	Bakery Products

Inner Component GTIN	50168750
Outer Case GTIN	05000168200958



## INGREDIENTS

### Ingredient Declaration

Glucose-Fructose Syrup, Dark Chocolate (19%) [Sugar, Cocoa Mass, Vegetable Fats (Palm, Shea), Butter Oil (MILK), Cocoa Butter, Emulsifiers (SOYA Lecithin, E476), Natural Flavouring], Sugar, Flour (WHEAT Flour, Calcium, Iron, Niacin, Thiamin), Whole EGG, Water, Dextrose, Concentrated Orange Juice, Glucose Syrup, Vegetable Oils (Sunflower, Palm), Humectant (Glycerine), Gelling Agent (Pectin), Acid (Citric Acid), Raising Agents (Ammonium Bicarbonate, Disodium Diphosphate, Sodium Bicarbonate), Dried Whole EGG, Acidity Regulator (Sodium Citrates), Natural Orange Flavouring, Colour (Curcumin), Emulsifier (SOYA Lecithin).

## ALLERGENS

### Product Contains:

Celery/Celeriac	No	Mustard	No
Cereals Containing Gluten	Yes	Nuts (Tree)	No
Barley	May Contain	Almond nuts	No
Oats	May Contain	Brazil nuts	No
Rye	May Contain	Cashew nuts	No
Wheat (including Spelt and Khorasan)	Yes	Hazelnuts	No
Crustacea	No	Macadamia (Queensland) nuts	No
Eggs	Yes	Pecan nuts	No
Fish	No	Pistachio nuts	No
Lupin	No	Walnuts	No
Milk	Yes	Peanuts	No
Molluscs	No	Sesame Seeds	No
		Soybeans	Yes
		Sulphur Dioxide and Sulphites	No

### Risk Source:

**Additional Allergen Information**

Contains: Milk, Egg, Soya, Gluten (Wheat).

**SUPPLEMENTARY  
INGREDIENT  
INFORMATION**

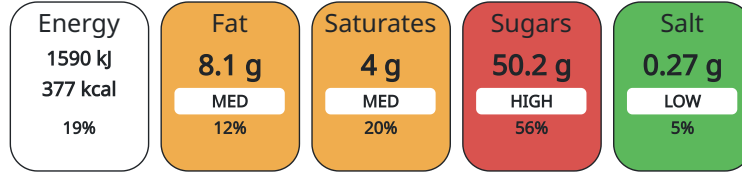
<b>Palm Oil</b>	Yes
<b>Hydrogenated Vegetable Oil/Fat</b>	No
<b>GM Protein/DNA</b>	No

**ADDITIVES***Product Contains:***DIET SUITABILITY**

<b>Vegan Diet</b>	No	<b>Vegetarian Diet</b>	Suitable for
<b>Halal Diet</b>	No	<b>Kosher Diet</b>	No

**NUTRITIONAL  
INFORMATION AS  
SOLD**

Each 100g/ml portion contains:



of your reference intake.

Typical values per 100g/ml : Energy 377kcal / 1590kJ

Nutrient	per 100g	RI per 100g
Energy (kJ)	1590 kJ	19%
Energy (kcal)	377 kcal	19%
Fat	8.1 g	12%
of which Saturates	4 g	20%
Carbohydrate	69.8 g	27%
of which Sugars	50.2 g	56%
Fibre	2.1 g	
Protein	5 g	10%
Salt	0.27 g	5%

**HFSS (HIGH IN  
FAT, SALT AND  
SUGAR)  
HANDLING &  
STORAGE  
INFORMATION**

<b>HFSS Status</b>	Yes
--------------------	-----

**Directions For Use**

Ready to Eat.

**Storage Instructions**

Store in a cool, dry place.

<b>Shelf Life from Time of Production</b>	126 Days
---	----------

**ACCREDITATIONS/  
CERTIFICATIONS/  
ASSURANCE  
SCHEMES  
ORIGIN**

<b>BRCGS Certified</b>	<b>Roundtable of Sustainable Palm Oil (RSPO)</b>
------------------------	--

<b>Product Country of Origin</b>	United Kingdom
----------------------------------	----------------

<b>Origin of the Primary Ingredient</b>	United Kingdom
---	----------------

**PRODUCT  
CHARACTERISTICS****Standards Testing**

<b>Do you undertake trend analysis of microbiological results?</b>	No	<b>Is shelf life testing undertaken?</b>	No
--	----	--	----

CONFIGURATION	Case Configuration			Inner Pack Configuration				
	<b>Total Quantity of Inner Components in</b>	20 Units		<b>Count per Inner Component</b>	4			
	<b>Outer Case</b>							
	<b>Is the Outer Case Splittable?</b>	Yes						
PRODUCT WEIGHTS	Inner Component							
	<b>Variable Weight Consumer Item</b>	No						
	Outer Case							
	<b>Outer Case Gross Weight</b>	1.12 kg						
	<b>Outer Case Net Weight</b>	0.98 kg						
PRODUCT DIMENSIONS	Inner Component							
	<b>Inner Component Depth</b>	130 mm						
	<b>Inner Component Width</b>	28 mm						
	<b>Inner Component Height</b>	58 mm						
	Outer Case							
	<b>Outer Case Depth</b>	248 mm						
	<b>Outer Case Width</b>	148 mm						
	<b>Outer Case Height</b>	152 mm						
PALLET INFORMATION	<b>Quantity of Cases Per Pallet Layer</b>	29 Cases	<b>Pallet Height</b>	1.3 MTR				
	<b>Quantity of Layers Per Pallet</b>	7 Layers						
	<b>Quantity of Cases Per Pallet</b>	203 Cases						
PACKAGING	Inner Component Packaging							
	<b>Type</b>	<b>Materials</b>	<b>Weight</b>	<b>Recycled Material %</b>	<b>Recyclable</b>	<b>Returnable</b>	<b>Composite</b>	
	Film	Plastic	1.17 g					
	Outer Case Packaging							
	<b>Type</b>	<b>Materials</b>	<b>Weight</b>	<b>Recycled Material %</b>	<b>Recyclable</b>	<b>Returnable</b>	<b>Composite</b>	
	Case	Plastic	23.4 g					
	Case	Paper/Cardboard	114 g					
	OTHER INFORMATION CONTACT INFORMATION	<b>Address</b>						
		Pladis (UK) Ltd						
		pladis, Building 3, Chiswick Park						
566 Chiswick High Road								
W4 5YA								
Chiswick								
London England								
Anna.Stachniak@pladisglobal.com								

The information on the [Erudus System](#) has been supplied by the manufacturers of the products and, whilst the owners of the Erudus System take steps to ensure the information is regularly updated, they give no warranty and no guarantee that the information is accurate. Product information and ingredients may change, please always read product labels carefully in addition to using the information provided by Erudus.

We do not accept liability for any inaccuracies or incorrect information contained on this site.  
Please visit <http://www.erudus.com/terms-and-conditions> for full terms and conditions.