

12222

# VIT HIT Detox - Mandarin & Orange

Vit Hit Detox - Mandarin & Orange 12x

## PRODUCT DESCRIPTION

Non carbonated soft drink, Mandarin Juice with Orange and Green Tea, Water and a blend of Vitamins

Brand	<a href="#">Vit Hit</a>
Manufacturer Product Code	VIT3D
Product Type	Drink
Product Category	Juices and Cordials
Storage Type	Ambient
Erudus ID	f59fed0bacf74291866757e0f7b94985
Specification Type	Legacy



Inner Component GTIN 5034033000497

Outer Case GTIN 05034033000640



## INGREDIENTS

### Ingredient Declaration

water, mandarin juice from concentrate (8%), orange juice from concentrate (4%), flavourings, green tea extract, vitamin blend (vitamin C, niacin, pantothenic acid, vitamin B6, vitamin B1, folic acid, biotin, vitamin B12), antioxidant (ascorbic acid), sweetener sucralose, citric acid, stabilisers (pectin, locust bean gum), colour (beta carotene), natural citrus flavouring

## ALLERGENS

Product Contains:

Celery/Celery	No	Mustard	No
Cereals Containing Gluten	No	Nuts (Tree)	No
Barley	No	Almond nuts	No
Oats	No	Brazil nuts	No
Rye	No	Cashew nuts	No
Wheat (including Spelt and Khorasan)	No	Hazelnuts	No
Gluten content <20ppm	Yes	Macadamia (Queensland) nuts	No
Crustacea	No	Pecan nuts	No
Eggs	No	Pistachio nuts	No
Fish	No	Walnuts	No
Lupin	No	Peanuts	No
Milk	No	Sesame Seeds	No
Molluscs	No	Soybeans	No
		Sulphur Dioxide and Sulphites	No

SUPPLEMENTARY  
INGREDIENT  
INFORMATION

Palm Oil	No
Hydrogenated Vegetable Oil/Fat	No
GM Protein/DNA	No

ADDITIVES

Product Contains:

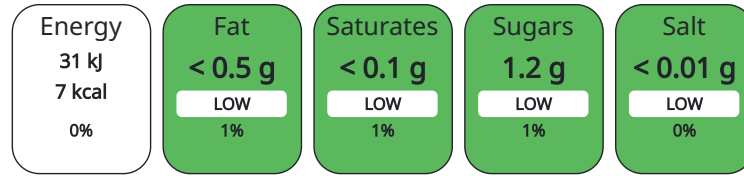
Artificial Sweeteners	Yes
-----------------------	-----

DIET SUITABILITY

Suitable for Coeliacs	Yes	Halal Diet	No
Kosher Diet	No	Vegetarian Diet	Suitable for
Vegan Diet	Suitable for		

NUTRITIONAL  
INFORMATION

Each 100g/ml portion contains:



of your reference intake.

Typical values per 100g/ml : Energy 7kcal / 31kj

Nutrient	per 100g/ml	RI per 100g/ml	per 500g/ml serving	RI per 500g/ml serving
Energy (kJ)	31 kJ	0%	155	2%
Energy (kcal)	7 kcal	0%	35	2%
Fat	< 0.5 g	1%	2.5 g	4%
of which Saturates	< 0.1 g	1%	0.5 g	3%
of which Mono-unsaturates	< 0.1 g		0.5 g	
of which Polyunsaturates	< 0.1 g		0.5 g	
Carbohydrate	1.2 g	0%	6 g	2%
of which Sugars	1.2 g	1%	6 g	7%
Fibre	< 0.5 g		2.5 g	
Protein	< 0.5 g	1%	2.5 g	5%
Salt	< 0.01 g	0%	0.05 g	1%
Sodium	< 0.01 mg		0.05 mg	

Serving Size 500 g

VITAMINS AND  
MINERALS

Nutrient	per 100g/ml	RI per 100g/ml	per 500g/ml serving	RI per 500g/ml serving
Vitamin C	43.6 mg	55%	218 mg	273%
Folate/Folic Acid	40 µg	20%	200 µg	100%

HANDLING &  
STORAGE  
INFORMATION

Directions For Use

Best served chilled. Keep cool and out of direct sunlight. Once open keep refrigerated and consume within 3 days and by date shown

Storage Instructions

Keep cool and out of direct sunlight. Once open keep refrigerated and consume within 3 days and by date shown

Shelf Life from Time of Production 240 Days

ACCREDITATIONS/  
CERTIFICATIONS/  
ASSURANCE  
SCHEMES

BRCGS Certified

ORIGIN	Product Country of Origin	United Kingdom					
PRODUCT CHARACTERISTICS	Standards Testing						
	Do you undertake trend analysis of microbiological results?	No	Is shelf life testing undertaken?	Yes			
CONFIGURATION	Case Configuration	Inner Pack Configuration					
	Total Quantity of Inner Components in Outer Case	12 Units					
PRODUCT WEIGHTS	Inner Component						
	Variable Weight Consumer Item	No					
	Weight/Volume	500ml 526g					
	Outer Case						
	Outer Case Gross Weight	6.38 kg					
	Outer Case Net Weight	6 kg					
PRODUCT DIMENSIONS	Inner Component						
	Inner Component Depth	66 mm					
	Inner Component Width	66 mm					
	Inner Component Height	198 mm					
	Outer Case						
	Outer Case Depth	266 mm					
	Outer Case Width	200 mm					
	Outer Case Height	199 mm					
	PALLET INFORMATION	Quantity of Cases Per Pallet Layer	22 Cases	Pallet Height	1.57 MTR		
		Quantity of Layers Per Pallet	7 Layers	Pallet Gross Weight	1015 kg		
Quantity of Cases Per Pallet		154 Cases					
PACKAGING	Inner Component Packaging						
	<b>Type</b>	<b>Materials</b>	<b>Weight</b>	<b>Recycled Material %</b>	<b>Recyclable</b>	<b>Returnable</b>	<b>Composite</b>
	Pack	Plastic	16 g				
	Pack	Paper/Cardboard	32 g				
	Outer Case Packaging						
	<b>Type</b>	<b>Materials</b>	<b>Weight</b>	<b>Recycled Material %</b>	<b>Recyclable</b>	<b>Returnable</b>	<b>Composite</b>
	Case	Plastic	50 g				
	Case	Paper/Cardboard	150 g				
	OTHER INFORMATION CONTACT INFORMATION	<b>Address</b>	<b>Technical</b>				
		Vit Hit Studio LU.403, The Lightbulb 1 Filament Walk SW18 4GQ Wandsworth London United Kingdom  ryan@vithit.com 07731400101	Calum Walker calum@vithit.com UK Supply Chain Manager  <b>Commercial</b> Orders Team ukorders@vithit.com Vit Hit Team				

The information on the [Erudus System](#) has been supplied by the manufacturers of the products and, whilst the owners of the Erudus System take steps to ensure the information is regularly updated, they give no warranty and no guarantee that the information is accurate. Product information and ingredients may change, please always read product labels carefully in addition to using the information provided by Erudus.

We do not accept liability for any inaccuracies or incorrect information contained on this site.  
Please visit <http://www.erudus.com/terms-and-conditions> for full terms and conditions.