

12223

VIT HIT Lean & Green - Apple & Elderflower

Vit Hit Lean & Green - Apple & Elderflower 12x

PRODUCT DESCRIPTION

Non carbonated soft drink, Green Apple Juice with Elderflower & Mate Tea, Water and a blend of Vitamins

Brand	Vit Hit
Manufacturer Product Code	VIT4D
Product Type	Drink
Product Category	Juices and Cordials
Storage Type	Ambient
Erudus ID	bcaadbe587ca467e9437e3039fe20009
Specification Type	Legacy

STILL DRINK WITH APPLE JUICE FROM CONCENTRATE, ELDERFLOWER FLAVOUR WITH ADDED VITAMINS AND SWEETENER. Ingredients: water; apple juice from concentrate (12.0%), elderflower flavouring (0.17%), acid: citric acid, mate extract (0.09%), vitamin blend: vitamin C, niacin, pantothenic acid, vitamin B6, vitamin B1, folic acid, biotin, vitamin B12, L-carnitine (0.022%), antioxidant: ascorbic acid; stabilisers: gum arabic and glycerol esters of wood rosin; sweetener: sucralose; colours: copper complexes of chlorophylls and chlorophyllins and sulphite ammonia caramel.

GREEN APPLE JUICE DRINK WITH ADDED VITAMINS			TYPICAL NUTRITIONAL INFO / 100ml	
VITAMINS	Per 100 ml/100g	RI/Bottle	Energy per 100ml	g/L / 100ml
Vitamin C	10 mg / 20%	100%	Energy	45J
Vitamin B1 (Thiamine)	0.22 mg / 20%	100%	Fat	0.1g
Niacin	3.2 mg / 20%	100%	of which saturates	0.1g
Vitamin B6	0.28 mg / 20%	100%	Carbohydrate	1.1g
Folate	40 µg / 20%	100%	of which sugars*	1.1g
Vitamin B12	0.5 µg / 20%	100%	Fibre	0.5g
Biotin	10 µg / 20%	100%	Protein	0.1g
Pantothenic acid	1.2 mg / 20%	100%	Salt	0.1g

* Contains naturally occurring sugars. Contains 1mg of sucralose per 100ml.
Storage instructions: Keep cool & out of direct sunlight. Once open keep refrigerated and consume within 7 days and by date shown. Shake well before consuming. See pack for best before end date. Packed for VIT HIT Ltd., 1 Filament Walk, Unit 11/12, Watlington, OX11 6GL, UK and Vit Hit Ltd., Kinnegar Pkwy, 8 Kinnegar Park, Dublin 2, Ireland.

Inner Component GTIN	5034033000220
Outer Case GTIN	05034033000688



INGREDIENTS

Ingredient Declaration

water, apple juice from concentrate (12%) flavouring (natural elderflower and other flavours), antioxidant (ascorbic acid, stabilisers gum arabic and glycerol esters of wood rosin), sweetener sucralose, vitamin blend (vitamin C, niacin, pantothenic acid, vitamin B6, vitamin B1, folic acid, biotin, vitamin B12), natural colours (copper complexes of chlorophylls, copper complexes of chlorophyllins and sulphite ammonia caramel), Maté tea, L-Carnitine and citric acid.

ALLERGENS

Product Contains:

Celery/Celeriac	No	Mustard	No
Cereals Containing Gluten	No	Nuts (Tree)	No
Barley	No	Almond nuts	No
Oats	No	Brazil nuts	No
Rye	No	Cashew nuts	No
Wheat (including Spelt and Khorasan)	No	Hazelnuts	No
Gluten content <20ppm	Yes	Macadamia (Queensland) nuts	No
Crustacea	No	Pecan nuts	No
Eggs	No	Pistachio nuts	No
Fish	No	Walnuts	No
Lupin	No	Peanuts	No
Milk	No	Sesame Seeds	No
Molluscs	No	Soybeans	No
		Sulphur Dioxide and Sulphites	No

SUPPLEMENTARY
INGREDIENT
INFORMATION

Palm Oil	No
Hydrogenated Vegetable Oil/Fat	No
GM Protein/DNA	No

ADDITIVES

Product Contains:

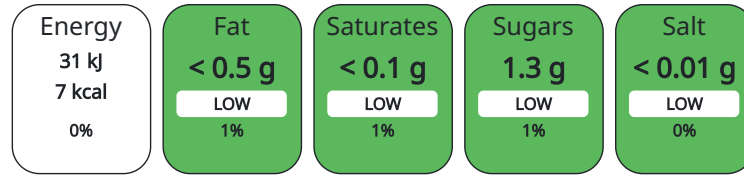
Artificial Sweeteners	Yes
-----------------------	-----

DIET SUITABILITY

Suitable for Coeliacs	Yes	Halal Diet	No
Kosher Diet	No	Vegetarian Diet	Suitable for
Vegan Diet	Suitable for		

NUTRITIONAL
INFORMATION

Each 100g/ml portion contains:



of your reference intake.

Typical values per 100g/ml : Energy 7kcal / 31kj

Nutrient	per 100g/ml	RI per 100g/ml	per 500g/ml serving	RI per 500g/ml serving
Energy (kJ)	31 kJ	0%	155	2%
Energy (kcal)	7 kcal	0%	35	2%
Fat	< 0.5 g	1%	2.5 g	4%
of which Saturates	< 0.1 g	1%	0.5 g	3%
of which Mono-unsaturates	< 0.1 g		0.5 g	
of which Polyunsaturates	< 0.1 g		0.5 g	
Carbohydrate	1.4 g	1%	7 g	3%
of which Sugars	1.3 g	1%	6.5 g	7%
Fibre	< 0.5 g		2.5 g	
Protein	< 0.5 g	1%	2.5 g	5%
Salt	< 0.01 g	0%	0.05 g	1%
Sodium	< 0.01 mg		0.05 mg	

Serving Size 500 g

VITAMINS AND
MINERALS

Nutrient	per 100g/ml	RI per 100g/ml	per 500g/ml serving	RI per 500g/ml serving
Vitamin C	16 mg	20%	80 mg	100%
Folate/Folic Acid	40 µg	20%	200 µg	100%

HANDLING &
STORAGE
INFORMATION

Directions For Use

Best served chilled. Keep cool and out of direct sunlight. Once open keep refrigerated and consume within 3 days and by date shown

Storage Instructions

Keep cool and out of direct sunlight. Once open keep refrigerated and consume within 3 days and by date shown

Shelf Life from Time of Production 240 Days

ACCREDITATIONS/
CERTIFICATIONS/
ASSURANCE
SCHEMES

BRCGS Certified

ORIGIN	Product Country of Origin		United Kingdom				
PRODUCT CHARACTERISTICS	Standards Testing						
	Do you undertake trend analysis of microbiological results?		No	Is shelf life testing undertaken?		Yes	
CONFIGURATION	Case Configuration			Inner Pack Configuration			
	Total Quantity of Inner Components in Outer Case		12 Units				
PRODUCT WEIGHTS	Inner Component						
	Variable Weight Consumer Item		No				
	Weight/Volume						
	500ml 526g						
	Outer Case						
PRODUCT DIMENSIONS	Outer Case Gross Weight		6.38 kg				
	Outer Case Net Weight		6 kg				
	Inner Component						
	Inner Component Depth		66 mm				
	Inner Component Width		66 mm				
	Inner Component Height		198 mm				
	Outer Case						
	Outer Case Depth		266 mm				
	Outer Case Width		200 mm				
	Outer Case Height		199 mm				
PALLET INFORMATION	Quantity of Cases Per Pallet Layer		22 Cases	Pallet Height		1.57 MTR	
	Quantity of Layers Per Pallet		7 Layers	Pallet Gross Weight		1015 kg	
	Quantity of Cases Per Pallet		154 Cases				
PACKAGING	Inner Component Packaging						
	Type	Materials	Weight	Recycled Material %	Recyclable	Returnable	Composite
	Pack	Plastic	16 g				
	Pack	Paper/Cardboard	32 g				
	Outer Case Packaging						
	Type	Materials	Weight	Recycled Material %	Recyclable	Returnable	Composite
	Case	Plastic	50 g				
	Case	Paper/Cardboard	150 g				
	OTHER INFORMATION CONTACT INFORMATION	Address			Technical		
		Vit Hit Studio LU.403, The Lightbulb 1 Filament Walk SW18 4GQ Wandsworth London United Kingdom ryan@vithit.com 07731400101			Calum Walker calum@vithit.com UK Supply Chain Manager Commercial Orders Team ukorders@vithit.com Vit Hit Team		

The information on the [Erudus System](#) has been supplied by the manufacturers of the products and, whilst the owners of the Erudus System take steps to ensure the information is regularly updated, they give no warranty and no guarantee that the information is accurate. Product information and ingredients may change, please always read product labels carefully in addition to using the information provided by Erudus.

We do not accept liability for any inaccuracies or incorrect information contained on this site.
Please visit <http://www.erudus.com/terms-and-conditions> for full terms and conditions.