

Changed Aug 30, 2024 10:30

Reviewed Aug 30, 2024 10:30

Erudus ID 23bc411991d04d4086a16f3bf483e544

Version 1.0

Status Published

12255

ROBINSONS READY TO DRINK RASPBERRY & APPLE JUICE DRINK 24 X 500ML

Still No Added Sugar Apple And Raspberry Juice Drink With Sweeteners 24x

PRODUCT DESCRIPTION

Contains Artificial Sweetener(s) Contains Natural Flavouring(s) Contains Preservatives Suitable for vegetarians and vegans

| | |
|---------------------------|---|
| Brand | Britvic Soft Drinks Limited |
| Manufacturer Product Code | 250783 |
| Manufacturer Version | v1 |
| Number | |
| Product Type | Drink |
| Product Category | Carbonated & Soft Drinks |
| Storage Type | Ambient |
| Erudus ID | 23bc411991d04d4086a16f3bf483e544 |
| Specification Type | Drinks |



Inner Component GTIN 5010102243705

Outer Case GTIN 05010102233560



INGREDIENTS

Ingredient Declaration

Water, Fruit Juices from Concentrate (Apple 19%, Raspberry 1%), Acid (Citric Acid), Natural Colour (Anthocyanins), Acidity Regulator (Sodium Citrate), Stabiliser (Cellulose Gum), Sweeteners (Acesulfame K, Sucralose), Natural Flavouring.

ALLERGENS

Product Contains:

| | | | |
|--------------------------------------|----|-------------------------------|----|
| Celery/Celery | No | Mustard | No |
| Cereals Containing Gluten | No | Nuts (Tree) | No |
| Barley | No | Almond nuts | No |
| Oats | No | Brazil nuts | No |
| Rye | No | Cashew nuts | No |
| Wheat (including Spelt and Khorasan) | No | Hazelnuts | No |
| Crustacea | No | Macadamia (Queensland) nuts | No |
| Eggs | No | Pecan nuts | No |
| Fish | No | Pistachio nuts | No |
| Lupin | No | Walnuts | No |
| Milk | No | Peanuts | No |
| Molluscs | No | Sesame Seeds | No |
| | | Soybeans | No |
| | | Sulphur Dioxide and Sulphites | No |

SUPPLEMENTARY INGREDIENT INFORMATION

| | | | |
|--------------------------------|----|----------------------------|------|
| Palm Oil | No | CBD Concentration per Unit | 0 mg |
| Hydrogenated Vegetable Oil/Fat | No | | |
| GM Protein/DNA | No | | |

ADDITIVES

Product Contains:

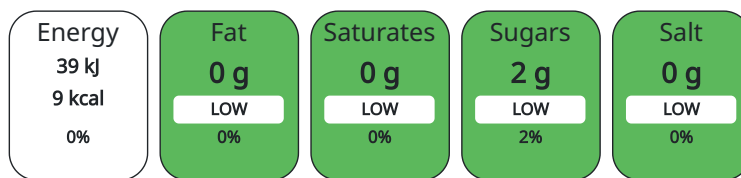
| | | | |
|------------------------------|----|--------------------------|-----|
| Artificial Antioxidants | No | Artificial Flavourings | No |
| Artificial Colours | No | Artificial Preservatives | No |
| Artificial Flavour Enhancers | No | Artificial Sweeteners | Yes |

DIET SUITABILITY

| | | | |
|------------|--------------|-----------------|--------------|
| Vegan Diet | Suitable for | Vegetarian Diet | Suitable for |
| Halal Diet | Suitable for | Kosher Diet | Suitable for |

NUTRITIONAL INFORMATION AS SOLD

Each 100g/ml portion contains:



of your reference intake.

Typical values per 100g/ml : Energy 9kcal / 39kJ

| Nutrient | per 100ml | RI per 100ml |
|---------------------------|-----------|--------------|
| Energy (kJ) | 39 kJ | 0% |
| Energy (kcal) | 9 kcal | 0% |
| Fat | 0 g | |
| of which Saturates | 0 g | |
| of which Mono-unsaturates | 0 g | |
| of which Polyunsaturates | 0 g | |
| Carbohydrate | 2 g | 1% |
| of which Sugars | 2 g | 2% |
| Protein | 0 g | |
| Salt | 0 g | |
| Sodium | 0 mg | |

| NUTRITIONAL INFORMATION AS PREPARED | Nutrient | per 100g/ml prepared | RI per 100g/ml prepared | |
|---------------------------------------|---|---|-----------------------------------|---------------------------------------|
| | | Energy (kcal) | | |
| | of which Sugars | | | |
| HFSS (HIGH IN FAT, SALT AND SUGAR) | HFSS Status | No | | |
| | HFSS Score | 0 | | |
| HANDLING & STORAGE INFORMATION | Directions For Use | Ready to drink | | |
| | Storage Instructions | Store in a cool and dry place | | |
| | Shelf Life from Time of Production | 244 Days | | |
| | Shelf Life From Opening | 0 Days | | |
| | Product Country of Origin | United Kingdom | | |
| ORIGIN | Origin of the Primary Ingredient | | | |
| PRODUCT CHARACTERISTICS CONFIGURATION | Standards Testing | | | |
| | Case Configuration | | Inner Pack Configuration | |
| | Variable Inner Components in Outer Case | No | | |
| | Total Quantity of Inner Components in Outer Case | 24 Units | | |
| | Is the Outer Case Splittable? | Yes | | |
| PRODUCT WEIGHTS | Inner Component | | | |
| | Outer Case | | | |
| | Outer Case Gross Weight | 12.1 kg | | |
| | Outer Case Net Weight | 12 kg | | |
| | Inner Component | | | |
| PRODUCT DIMENSIONS | Inner Component Depth | 0 mm | | |
| | Inner Component Width | 0 mm | | |
| | Inner Component Height | 118 mm | | |
| | Inner Component Diameter | 68 mm | | |
| | Outer Case | | | |
| | Outer Case Depth | 419 mm | | |
| | Outer Case Width | 277 mm | | |
| | Outer Case Height | 192 mm | | |
| | PALLET INFORMATION | Quantity of Cases Per Pallet Layer | 9 Cases | Pallet Type UK Standard Pallet |
| | | Quantity of Layers Per Pallet | 7 Layers | Pallet Height 1.52 MTR |
| Quantity of Cases Per Pallet | | 63 Cases | Pallet Gross Weight 829 kg | |
| MARKETING INFORMATION | Marketing Description | Still No Added Sugar Apple and Raspberry Juice Drink with Sweeteners. | | |
| OTHER INFORMATION | | | | |

CONTACT
INFORMATION

Address

Britvic Soft Drinks Limited
Breakspear Park
Breakspear Way
HP2 4TZ
Hemel Hempstead
Hertfordshire
United Kingdom

Graham.Townes@britvic.com

Technical

Nikki Burton
TechnicalInformationRequests@britvic.com
+44 (0) 7736747481
Technical Specifications Manager

The information on the [Erudus System](#) has been supplied by the manufacturers of the products and, whilst the owners of the Erudus System take steps to ensure the information is regularly updated, they give no warranty and no guarantee that the information is accurate. Product information and ingredients may change, please always read product labels carefully in addition to using the information provided by Erudus.

We do not accept liability for any inaccuracies or incorrect information contained on this site.
Please visit <http://www.erudus.com/terms-and-conditions> for full terms and conditions.