

12271

Popworks Sweet & Salty Popped Crisps 28g x 18

Popworks Sweet & Salty Popped Crisps 18x28g

PRODUCT DESCRIPTION

Popworks Sweet & Salty Popped Crisps 28g

Brand	Walkers Snacks Limited (PepsiCo)
Manufacturer Product Code	300003014
Product Type	Food
Product Category	Crisps & Snacks
Storage Type	Ambient
Erudus ID	ff7b8d6ca09644319c1d259eb3f46325
Specification Type	Legacy



Inner Component GTIN 05000328015583

Outer Case GTIN 05000328015590



INGREDIENTS

Ingredient Declaration

Corn (74%), Sunflower Oil, Sugar, Pea Fibre, Sea Salt

ALLERGENS

Product Contains:

Celery/Celeriac	No
Cereals Containing Gluten	No
Barley	No
Oats	No
Rye	No
Wheat (including Spelt and Khorasan)	No
Crustacea	No
Eggs	No
Fish	No
Lupin	No
Milk	May Contain
Molluscs	No

Mustard	No
Nuts (Tree)	No
Almond nuts	No
Brazil nuts	No
Cashew nuts	No
Hazelnuts	No
Macadamia (Queensland) nuts	No
Pecan nuts	No
Pistachio nuts	No
Walnuts	No
Peanuts	No
Sesame Seeds	No
Soybeans	May Contain
Sulphur Dioxide and Sulphites	No

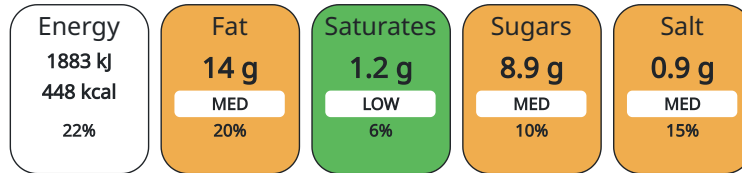
Risk Source:

SUPPLEMENTARY
INGREDIENT
INFORMATION
ADDITIVES

GM Protein/DNA	No		
<i>Product Contains:</i>			
Artificial Antioxidants	No	Artificial Preservatives	No
Artificial Colours	No		
DIET SUITABILITY			
Suitable for Coeliacs	No	Halal Diet	No
Kosher Diet	No	Vegetarian Diet	Suitable for
Vegan Diet	Suitable for		

NUTRITIONAL
INFORMATION

Each 100g/ml portion contains:



of your reference intake.

Typical values per 100g/ml : Energy 448kcal / 1883kj

Nutrient	per 100g/ml	RI per 100g/ml
Energy (kJ)	1883 kJ	22%
Energy (kcal)	448 kcal	22%
Fat	14 g	20%
of which Saturates	1.2 g	6%
Carbohydrate	72 g	28%
of which Sugars	8.9 g	10%
Fibre	4.6 g	
Protein	6.7 g	13%
Salt	0.9 g	15%

HFSS (HIGH IN
FAT, SALT AND
SUGAR)
HANDLING &
STORAGE
INFORMATION

HFSS Status	No
Directions For Use	
This pack contains 1 serving	
Storage Instructions	
Store in cool, dry place	
Shelf Life from Time of Production	301 Days

ORIGIN

Product Country of Origin	United Kingdom
----------------------------------	----------------

PRODUCT
CHARACTERISTICS
CONFIGURATION

Standards Testing	
Case Configuration	Inner Pack Configuration
Total Quantity of Inner Components in Outer Case	18 Units

PRODUCT
WEIGHTS

Inner Component	
Variable Weight Consumer Item	No
Inner Component Weight	28 g
Outer Case	
Outer Case Gross Weight	0.82 kg
Outer Case Net Weight	0.5 kg

PRODUCT DIMENSIONS

Inner Component	
Inner Component Depth	4 mm
Inner Component Width	140 mm
Inner Component Height	230 mm
Outer Case	
Outer Case Depth	401 mm
Outer Case Width	257 mm
Outer Case Height	189 mm

PALLET INFORMATION

Quantity of Cases Per Pallet Layer	9 Cases	Pallet Height	2.22 MTR
Quantity of Layers Per Pallet	11 Layers		
Quantity of Cases Per Pallet	99 Cases		

OTHER INFORMATION CONTACT INFORMATION

Address
Walkers Snacks Limited (PepsiCo)
450 South Oak Way
Green Park
RG2 6UW
Reading
United Kingdom

karthick.s@pepsico.com
07824608485

Commercial
Olivia.Greenaway@pepsico.com
olivia.greenaway@pepsico.com

The information on the [Erudus System](#) has been supplied by the manufacturers of the products and, whilst the owners of the Erudus System take steps to ensure the information is regularly updated, they give no warranty and no guarantee that the information is accurate. Product information and ingredients may change, please always read product labels carefully in addition to using the information provided by Erudus.

We do not accept liability for any inaccuracies or incorrect information contained on this site.
Please visit <http://www.erudus.com/terms-and-conditions> for full terms and conditions.