

Changed Nov 12, 2024 17:10

Reviewed Nov 12, 2024 17:10

Erudus ID 1316d69ca5d648f0b0b75551fb802827

Version 1.0

Status Published



12289

Skittles Fruits Sweets Pouch 136g

Skittles Fruits Sweets Pouch 136g 15x0.14kg

PRODUCT DESCRIPTION

Chewy / Toffee Candy

Brand	Mars
Manufacturer Product Code	456361
Product Type	Food
Product Category	Confectionery
Storage Type	Ambient
Erudus ID	1316d69ca5d648f0b0b75551fb802827
Specification Type	Generic

Inner Component GTIN	4009900546089
Outer Case GTIN	4009900546096

INGREDIENTS

Ingredient Declaration

Sugar, Glucose Syrup, Palm Fat, Acids (Citric Acid, Malic Acid), Dextrin, Maltodextrin, Flavourings, Modified Starch, Colours (E162, E163, E170, E160a, E100, E132, E133), Acidity Regulator (Trisodium Citrate), Glazing Agent (Carnauba Wax)

ALLERGENS

Product Contains:

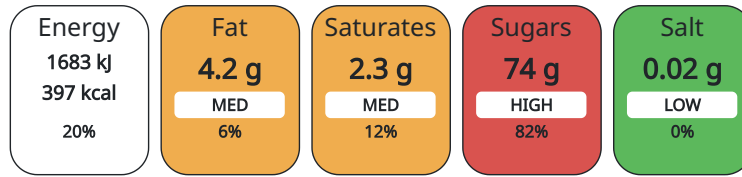
Celery/Celeriac	No	Mustard	No
Cereals Containing Gluten	No	Nuts (Tree)	No
Barley	No	Almond nuts	No
Oats	No	Brazil nuts	No
Rye	No	Cashew nuts	No
Wheat (including Spelt and Khorasan)	No	Hazelnuts	No
Crustacea	No	Macadamia (Queensland) nuts	No
Eggs	No	Pecan nuts	No
Fish	No	Pistachio nuts	No
Lupin	No	Walnuts	No
Milk	No	Peanuts	No
Molluscs	No	Sesame Seeds	No
		Soybeans	No
		Sulphur Dioxide and Sulphites	No

SUPPLEMENTARY INGREDIENT INFORMATION ADDITIVES

GM Protein/DNA	No
-----------------------	----

Product Contains:

Each 100g/ml portion contains:



of your reference intake.

Typical values per 100g/ml : Energy 397kcal / 1683kJ

Nutrient	per 100g	RI per 100g
Energy (kJ)	1683 kJ	20%
Energy (kcal)	397 kcal	20%
Fat	4.2 g	6%
of which Saturates	2.3 g	12%
Carbohydrate	89 g	34%
of which Sugars	74 g	82%
Protein	0 g	
Salt	0.02 g	0%

HANDLING &
STORAGE
INFORMATION

Directions For Use

Ready to eat

Storage Instructions

Keep cool and dry

Shelf Life from Time of Production 730 Days

ORIGIN

Product Country of Origin Czech Republic

Origin of the Primary Ingredient

PRODUCT
CHARACTERISTICS
CONFIGURATION

Standards Testing

Case Configuration

Inner Pack Configuration

Total Quantity of Inner Components in 15 Units

Outer Case

PRODUCT
WEIGHTS

Inner Component

Variable Weight Consumer Item No

Inner Component Weight 0.14 kg

Outer Case

Outer Case Gross Weight 2.35 kg

Outer Case Net Weight 2.04 kg

PRODUCT
DIMENSIONS

Inner Component

Inner Component Depth 0 mm

Inner Component Width 0 mm

Inner Component Height 0 mm

Outer Case

Outer Case Depth 454 mm

Outer Case Width 125 mm

Outer Case Height 183 mm

PALLET
INFORMATION

Quantity of Cases Per Pallet Layer	19 Cases
Quantity of Layers Per Pallet	8 Layers
Quantity of Cases Per Pallet	152 Cases

Pallet Height	1.63 MTR
Pallet Gross Weight	390.59 kg

OTHER
INFORMATION
CONTACT
INFORMATION

Address

Mars
3d Dundee Road
SL1 4LG
Slough
United Kingdom

adrian.holdstock@effem.com

Technical

Sharon Day
sharon.day@effem.com

The information on the [Erudus System](#) has been supplied by the manufacturers of the products and, whilst the owners of the Erudus System take steps to ensure the information is regularly updated, they give no warranty and no guarantee that the information is accurate. Product information and ingredients may change, please always read product labels carefully in addition to using the information provided by Erudus.

We do not accept liability for any inaccuracies or incorrect information contained on this site.
Please visit <http://www.erudus.com/terms-and-conditions> for full terms and conditions.