

Changed Dec 19, 2025 00:00

Reviewed Dec 18, 2025 14:12

Erudus ID d80485721b4149ff88768004625d3be6

Version 3.0

Status Published

12295

HFSS PROPERCORN Sweet & Salty Popcorn 30g

Propercorn Sweet & Salty Popcorn 24x30g

PRODUCT DESCRIPTION

Caramelised popcorn seasoned with sea salt

Brand	Propercorn
Manufacturer Product Code	HFSS S&S3072
Effective Date	Dec 18, 2025
Product Type	Food
Product Category	Nuts and Seeds
Storage Type	Ambient
Erudus ID	d80485721b4149ff88768004625d3be6
Specification Type	Generic



Inner Component GTIN 5060283760034

Outer Case GTIN 15060283760031



INGREDIENTS

Ingredient Declaration

Wholegrain corn (63%), rapeseed oil, demerara sugar, glazing agent (isomalt), sea salt.

ALLERGENS

Product Contains:

Celery/Celeriac	No	Mustard	No
Cereals Containing Gluten	No	Nuts (Tree)	No
Barley	No	Almond nuts	No
Oats	No	Brazil nuts	No
Rye	No	Cashew nuts	No
Wheat (including Spelt and Khorasan)	No	Hazelnuts	No
Crustacea	No	Macadamia (Queensland) nuts	No
Eggs	No	Pecan nuts	No
Fish	No	Pistachio nuts	No
Lupin	No	Walnuts	No
Milk	No	Peanuts	No
Molluscs	No	Sesame Seeds	No
		Soybeans	No
		Sulphur Dioxide and Sulphites	No

SUPPLEMENTARY
INGREDIENT
INFORMATION

Palm Oil	No
Hydrogenated Vegetable Oil/Fat	No
GM Protein/DNA	No

ADDITIVES

Product Contains:

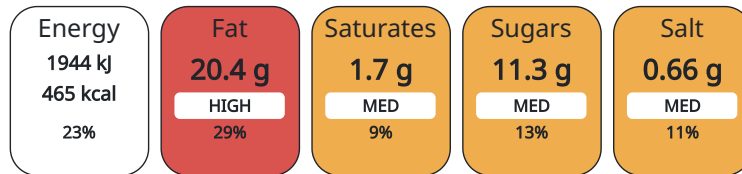
Artificial Antioxidants	No	Artificial Flavourings	No
Artificial Colours	No	Artificial Preservatives	No
Artificial Flavour Enhancers	No	Artificial Sweeteners	No

DIET SUITABILITY

Vegan Diet	Suitable for	Vegetarian Diet	Suitable for
Halal Diet	No	Kosher Diet	Suitable for

NUTRITIONAL
INFORMATION AS
SOLD

Each 100g/ml portion contains:



of your reference intake.

Typical values per 100g/ml : Energy 465kcal / 1944kj

Nutrient	per 100g	RI per 100g	per 30g serving	RI per 30g serving
Energy (kJ)	1944 kJ	23%	583.2	7%
Energy (kcal)	465 kcal	23%	139.5	7%
Fat	20.4 g	29%	6.12 g	9%
of which Saturates	1.7 g	9%	0.51 g	3%
Carbohydrate	56.5 g	22%	16.95 g	7%
of which Sugars	11.3 g	13%	3.39 g	4%
Fibre	12.6 g		3.78 g	
Protein	7.6 g	15%	2.28 g	5%
Salt	0.66 g	11%	0.2 g	3%

Serving Size 30 g

HANDLING &
STORAGE
INFORMATION

Directions For Use
N/A

Storage Instructions
N/A

Shelf Life from Time of Production 180 Days

ACCREDITATIONS/
CERTIFICATIONS/
ASSURANCE
SCHEMES
ORIGIN

BRCGS Certified

Product Country of Origin United Kingdom

Origin of the Primary Ingredient Italy

PRODUCT
CHARACTERISTICS

Standards Testing

Do you undertake trend analysis of microbiological results?	No	Is shelf life testing undertaken?	Yes
---	----	-----------------------------------	-----

Microbiological Standards

Organism	Description	Frequency	Target	Maximum	Sample (g or ml)
Bacillus Cereus (cfu/g or ml)		Annually	<10	10	10
E. Coli (cfu/g or ml)		Annually	<10	10	10
Enterobacteriaceae (cfu/g or ml)		Annually	<100	100	10
Listeria SPP (cfu/g or ml)		Annually	<0	0	25
Staphylococcus Aureus (cfu/g or ml)		Annually	<20	20	10
Total Viable Count (TVC) (cfu/g or ml)		Annually	<10000	10000	10
Salmonella (cfu/g or ml)		Annually	<0	0	25
Yeast (cfu/g or ml)		Annually	<1000	1000	10

CONFIGURATION

Case Configuration

Inner Pack Configuration

Total Quantity of Inner Components in Outer Case 24 Units

Is the Outer Case Splittable? No

PRODUCT WEIGHTS

Inner Component

Variable Weight Consumer Item No

Inner Component Weight 30 g

Outer Case

Outer Case Gross Weight 1.1 kg

Outer Case Net Weight 0.72 kg

PRODUCT DIMENSIONS

Inner Component

Inner Component Depth 0 mm

Inner Component Width 140 mm

Inner Component Height 245 mm

Outer Case

Outer Case Depth 499 mm

Outer Case Width 260 mm

Outer Case Height 199 mm

PALLET INFORMATION

Quantity of Cases Per Pallet Layer 12 Cases

Pallet Height 1.75 MTR

Quantity of Layers Per Pallet 6 Layers

Pallet Gross Weight 1.06 kg

Quantity of Cases Per Pallet 72 Cases

PACKAGING

Inner Component Packaging

Type	Materials	Weight	Recycled Material %	Recyclable	Returnable	Composite
Film	Other	4 g				

Outer Case Packaging

Type	Materials	Weight	Recycled Material %	Recyclable	Returnable	Composite
Case	Paper/Cardboard	290 g				

Transport Packaging

Type	Materials	Weight	Recycled Material %	Recyclable	Returnable	Composite
Other	Wood	280 g				

OTHER
INFORMATION

Manufacturer Comments

GTIN Barcode is 15060283760031, but unable to enter as same as old recipe.

CONTACT
INFORMATION

Address

Propercorn
WARP Snacks, We are real & Proper
184 Drummond Street
NW1 3HP
London
London
England

paul@propersnacks.com
N/A

Technical

Jill Hutton
jill@propersnacks.com
07586128156
Technical Manager

Commercial

Paul Wheeldon
paul@propersnacks.com
07392 198392
Head of Wholesale

Complaints

Technical Department
propersnacksqa@warpsnacks.com
07586128156
Technical Manager

The information on the [Erudus System](#) has been supplied by the manufacturers of the products and, whilst the owners of the Erudus System take steps to ensure the information is regularly updated, they give no warranty and no guarantee that the information is accurate. Product information and ingredients may change, please always read product labels carefully in addition to using the information provided by Erudus.

We do not accept liability for any inaccuracies or incorrect information contained on this site.
Please visit <http://www.erudus.com/terms-and-conditions> for full terms and conditions.