

Changed Apr 16, 2026 00:00

Reviewed Apr 15, 2026 09:22

Erudus ID d4c573fd2fc44c8fbb2899185a465619

Version 3.0

Status Published

12296

# PROPERCHIPS BBQ Lentil Chips 20g

50651 Properchips Bbq Lentil Chips 20g 24x20g

## PRODUCT DESCRIPTION

Lentil flour (28%), potato starch, vegetable oils (sunflower, rapeseed, coconut), corn flour, sugar, salt, natural flavourings, onion, garlic, rice flour, smoked chipotle pepper, tomato, spices.

Brand	<a href="#">Propercorn</a>
Manufacturer Product Code	CHBBQ20/50651
Effective Date	Apr 15, 2026
Product Type	Food
Product Category	Crisps & Snacks
Storage Type	Ambient
Erudus ID	d4c573fd2fc44c8fbb2899185a465619
Specification Type	Generic



Inner Component GTIN	5060283762250
Outer Case GTIN	15060283762257



## INGREDIENTS

### Ingredient Declaration

Lentil flour (28%), potato starch, vegetable oils (sunflower, rapeseed, coconut), corn flour, sugar, salt, natural flavourings, onion, garlic, rice flour, smoked chipotle pepper, tomato, spices.

## ALLERGENS

### Product Contains:

Celery/Celeriac	No	Mustard	No
Cereals Containing Gluten	No	Nuts (Tree)	No
Barley	No	Almond nuts	No
Oats	No	Brazil nuts	No
Rye	No	Cashew nuts	No
Wheat (including Spelt and Khorasan)	No	Hazelnuts	No
Crustacea	No	Macadamia (Queensland) nuts	No
Eggs	No	Pecan nuts	No
Fish	No	Pistachio nuts	No
Lupin	No	Walnuts	No
Milk	No	Peanuts	No
Molluscs	No	Sesame Seeds	No
		Soybeans	May Contain
		Sulphur Dioxide and Sulphites	No

Risk Source:

**Additional Allergen Information**

Allergen info: May contain Soya

**SUPPLEMENTARY  
INGREDIENT  
INFORMATION**

<b>Palm Oil</b>	No
<b>Hydrogenated Vegetable Oil/Fat</b>	No
<b>GM Protein/DNA</b>	No

**ADDITIVES**

*Product Contains:*

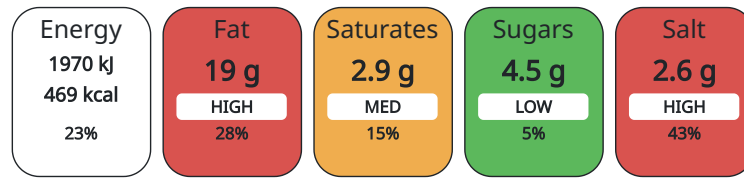
<b>Artificial Antioxidants</b>	No	<b>Artificial Flavourings</b>	No
<b>Artificial Colours</b>	No	<b>Artificial Preservatives</b>	No
<b>Artificial Flavour Enhancers</b>	No	<b>Artificial Sweeteners</b>	No

**DIET SUITABILITY**

<b>Vegan Diet</b>	Suitable for	<b>Vegetarian Diet</b>	Suitable for
<b>Halal Diet</b>	No	<b>Kosher Diet</b>	No

**NUTRITIONAL  
INFORMATION AS  
SOLD**

Each 100g/ml portion contains:



of your reference intake.

Typical values per 100g/ml : Energy 469kcal / 1970kJ

Nutrient	per 100g	RI per 100g
Energy (kJ)	1970 kJ	23%
Energy (kcal)	469 kcal	23%
Fat	19.4 g	28%
of which Saturates	2.9 g	15%
Carbohydrate	63.6 g	24%
of which Sugars	4.5 g	5%
Fibre	0.9 g	
Protein	9.5 g	19%
Salt	2.55 g	43%

**HANDLING &  
STORAGE  
INFORMATION**

**Directions For Use**

Ready to eat

**Storage Instructions**

Store in a cool, dry place

<b>Shelf Life from Time of Production</b>	180 Days
---	----------

**ORIGIN**

<b>Product Country of Origin</b>	United Kingdom
<b>Origin of the Primary Ingredient</b>	Canada

**PRODUCT  
CHARACTERISTICS**

Standards Testing

<b>Do you undertake trend analysis of microbiological results?</b>	No	<b>Is shelf life testing undertaken?</b>	Yes
--	----	--	-----

Microbiological Standards

Organism	Description	Frequency	Target	Maximum	Sample (g or ml)
Bacillus Cereus (cfu/g or ml)		Annually	<10	10	10

Organism	Description	Frequency	Target	Maximum	Sample (g or ml)
E. Coli (cfu/g or ml)		Annually	<10	10	10
Enterobacteriaceae (cfu/g or ml)		Annually	<10	10	10
Listeria SPP (cfu/g or ml)		Annually	<0	0	25
Staphylococcus Aureus (cfu/g or ml)		Annually	<20	20	10
Total Viable Count (TVC) (cfu/g or ml)		Annually	<1000	1000	10
Salmonella (cfu/g or ml)		Annually	<0	0	25
Yeast (cfu/g or ml)		Annually	<10000	10000	10

CONFIGURATION

Case Configuration		Inner Pack Configuration	
<b>Total Quantity of Inner Components in Outer Case</b>	24 Units		
<b>Is the Outer Case Splittable?</b>	No		

PRODUCT WEIGHTS

Inner Component	
<b>Variable Weight Consumer Item</b>	No
<b>Inner Component Weight</b>	20 g
Outer Case	
<b>Outer Case Gross Weight</b>	0.79 kg
<b>Outer Case Net Weight</b>	0.48 kg

PRODUCT DIMENSIONS

Inner Component	
<b>Inner Component Depth</b>	55 mm
<b>Inner Component Width</b>	139 mm
<b>Inner Component Height</b>	303 mm
Outer Case	
<b>Outer Case Depth</b>	496 mm
<b>Outer Case Width</b>	238 mm
<b>Outer Case Height</b>	166 mm

PALLET INFORMATION

<b>Quantity of Cases Per Pallet Layer</b>	10 Cases	<b>Pallet Height</b>	1.7 MTR
<b>Quantity of Layers Per Pallet</b>	9 Layers	<b>Pallet Gross Weight</b>	77.8 kg
<b>Quantity of Cases Per Pallet</b>	90 Cases		

PACKAGING

Inner Component Packaging						
Type	Materials	Weight	Recycled Material %	Recyclable	Returnable	Composite
Film	Plastic	3 g				
Outer Case Packaging						
Type	Materials	Weight	Recycled Material %	Recyclable	Returnable	Composite
Case	Paper/Cardboard	238 g				

OTHER INFORMATION

CONTACT  
INFORMATION

**Address**

Propercorn  
PROPER Snacks  
Townsend Drive  
CV11 6TJ  
Nuneaton  
England

paul@propersnacks.com  
N/A

**Technical**

Jill Hutton  
jill@propersnacks.com  
07586128156  
Technical Manager

**Commercial**

Paul Wheeldon  
paul@propersnacks.com  
07392 198392  
Head of Wholesale

**Complaints**

Technical Department  
propersnacksqa@warpsnacks.com  
07586128156  
Technical Manager

The information on the [Erudus System](#) has been supplied by the manufacturers of the products and, whilst the owners of the Erudus System take steps to ensure the information is regularly updated, they give no warranty and no guarantee that the information is accurate. Product information and ingredients may change, please always read product labels carefully in addition to using the information provided by Erudus.

We do not accept liability for any inaccuracies or incorrect information contained on this site.  
Please visit <http://www.erudus.com/terms-and-conditions> for full terms and conditions.