

Changed Apr 06, 2026 14:18

Reviewed Apr 06, 2026 14:18

Erudus ID 13b8cf980a624f1daeb5acedb3f79d7e

Version 1.1

Status Published

12368

# Rubicon Spring Spk Pink Grapefruit Blood Orange 500ml (12x500ml)

Spring Spk Pink Grapefruit Blood Orange 12x500ml

## PRODUCT DESCRIPTION

Sparkling Pink Grapefruit and Blood Orange Flavoured Spring Water Drink with Fruit Juice, Sweetener and Vitamins

Brand	<a href="#">A.G. Barr P.L.C</a>
Manufacturer Product Code	3436108
Product Type	Drink
Product Category	Carbonated & Soft Drinks
Storage Type	Ambient
Erudus ID	13b8cf980a624f1daeb5acedb3f79d7e
Specification Type	Drinks



Inner Component GTIN 5000382122333

Outer Case GTIN 05000382122326



## INGREDIENTS

### Ingredient Declaration

Spring Water (96%), Fruit Juices from Concentrate (Orange 2.6%, Pink Grapefruit 0.4%), Acid (Citric Acid), Natural Blood Orange Flavouring, Natural Pink Grapefruit Flavouring with other Natural Flavourings, Acidity Regulators (Trisodium Citrate), Preservative (Potassium Sorbate), Sweetener (Sucralose), Green Tea Extract, Colour (Anthocyanins), Vitamins (Niacin, B6, B12).

ALLERGENS

Product Contains:

Celery/Celery	No	Mustard	No
Cereals Containing Gluten	No	Nuts (Tree)	No
Barley	No	Almond nuts	No
Oats	No	Brazil nuts	No
Rye	No	Cashew nuts	No
Wheat (including Spelt and Khorasan)	No	Hazelnuts	No
Crustacea	No	Macadamia (Queensland) nuts	No
Eggs	No	Pecan nuts	No
Fish	No	Pistachio nuts	No
Lupin	No	Walnuts	No
Milk	No	Peanuts	No
Molluscs	No	Sesame Seeds	No
		Soybeans	No
		Sulphur Dioxide and Sulphites	No

SUPPLEMENTARY INGREDIENT INFORMATION

Palm Oil	No
Hydrogenated Vegetable Oil/Fat	No
GM Protein/DNA	No

ADDITIVES

Product Contains:

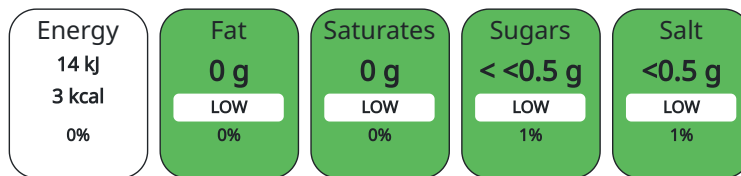
Artificial Antioxidants	No	Artificial Flavourings	No
Artificial Colours	No	Artificial Preservatives	Yes
Artificial Flavour Enhancers	No	Artificial Sweeteners	Yes

DIET SUITABILITY

Vegan Diet	Suitable for	Vegetarian Diet	Suitable for
Halal Diet	Suitable for	Kosher Diet	No

NUTRITIONAL INFORMATION AS SOLD

Each 100g/ml portion contains:



of your reference intake.

Typical values per 100g/ml : Energy 3kcal / 14kJ

Nutrient	per 100ml	RI per 100ml	per 250ml serving	RI per 250ml serving
Energy (kJ)	14 kJ	0%	35	0%
Energy (kcal)	3 kcal	0%	7.5	0%
Fat	0 g		0 g	
of which Saturates	0 g		0 g	
Carbohydrate	< 0.5 g	0%	1.25 g	0%
of which Sugars	< 0.5 g	1%	1.25 g	1%
Protein	0 g		0 g	
Salt	0.06 g	1%	0.15 g	3%
Serving Size	250 ml			

VITAMINS AND MINERALS AS SOLD

Nutrient	per 100ml	RI per 100ml	per 250ml serving	RI per 250ml serving
Niacin (B3)	1.2 mg	8%	3 mg	19%
Vitamin B6	0.11 mg	8%	0.28 mg	20%
Vitamin B12	0.19 µg	8%	0.48 µg	19%

HFSS (HIGH IN FAT, SALT AND SUGAR) HANDLING & STORAGE INFORMATION

HFSS Status	No
-------------	----

Directions For Use

Once opened, keep refrigerated and consume within 3 days.

Storage Instructions

Store in a cool, dry place away from direct sunlight

Shelf Life from Time of Production	270 Days	Exempt From Shelf Life Labelling	Yes
------------------------------------	----------	----------------------------------	-----

ACCREDITATIONS/ CERTIFICATIONS/ ASSURANCE SCHEMES ORIGIN

BRCGS Certified	ISO 14001 (Environmental Management)
-----------------	--------------------------------------

Product Country of Origin	United Kingdom
---------------------------	----------------

Additional Origin Details

Produced in the UK

Origin of the Primary Ingredient	United Kingdom
----------------------------------	----------------

PRODUCT CHARACTERISTICS

Standards Testing			
Do you undertake trend analysis of microbiological results?	Yes	Is shelf life testing undertaken?	Yes

CONFIGURATION

Case Configuration	Inner Pack Configuration
Total Quantity of Inner Components in Outer Case	12 Units
Is the Outer Case Splittable?	Yes

PRODUCT WEIGHTS

Inner Component	
Inner Component Volume	500 ml
Outer Case	
Outer Case Gross Weight	6.3 kg
Outer Case Net Weight	6.24 kg

PRODUCT DIMENSIONS

Inner Component	
Inner Component Depth	60 mm
Inner Component Width	60 mm
Inner Component Height	236 mm
Outer Case	
Outer Case Depth	240 mm
Outer Case Width	180 mm
Outer Case Height	236 mm

PALLET INFORMATION

Quantity of Cases Per Pallet Layer	28 Cases	Pallet Height	1.59 MTR
Quantity of Layers Per Pallet	6 Layers	Pallet Gross Weight	1084 kg
Quantity of Cases Per Pallet	168 Cases		

PACKAGING

Inner Component Packaging						
Type	Materials	Weight	Recycled Material %	Recyclable	Returnable	Composite
Bottle	Plastic	22.76 g				

#### Outer Case Packaging

Type	Materials	Weight	Recycled Material %	Recyclable	Returnable	Composite
Case	Plastic	16.65 g				
Case	Paper/Cardboard	0.61 g				

#### Transport Packaging

Type	Materials	Weight	Recycled Material %	Recyclable	Returnable	Composite
Other	Plastic	187 g			Yes	
Other	Paper/Cardboard	1739.14 g			Yes	

#### OTHER INFORMATION CONTACT INFORMATION

**Commodity Code** 22021000

#### Address

A.G. Barr P.L.C  
Westfield House  
4 Mollins Road  
G68 9HD  
Cumbernauld  
Scotland

debbiewinrow@agbarr.co.uk  
01236 852400

The information on the [Erudus System](#) has been supplied by the manufacturers of the products and, whilst the owners of the Erudus System take steps to ensure the information is regularly updated, they give no warranty and no guarantee that the information is accurate. Product information and ingredients may change, please always read product labels carefully in addition to using the information provided by Erudus.

We do not accept liability for any inaccuracies or incorrect information contained on this site.  
Please visit <http://www.erudus.com/terms-and-conditions> for full terms and conditions.