

Changed Jul 18, 2025 14:08

Reviewed Jul 18, 2025 14:08

Erudus ID 97493bbd543049fe87e9a610af5835b6

Version 2.0

Status Published

12410

# CADBURY 40G MINI FINGERS 16CA

Cadbury 40g Mini Fingers 16x40g

## PRODUCT DESCRIPTION

Crisp mini biscuits coated with milk chocolate (48%).

Brand	<a href="#">Mondelez UK Ltd</a>
Manufacturer Product Code	4248722
Product Type	Food
Product Category	Confectionery
Storage Type	Ambient
Erudus ID	97493bbd543049fe87e9a610af5835b6
Specification Type	Generic

Inner Component GTIN 07622210805027

Outer Case GTIN 07622210805287



## INGREDIENTS

### Ingredient Declaration

Ingredients: WHEAT flour, sugar, vegetable oils (palm, rapeseed), cocoa butter, cocoa mass, skimmed MILK powder, whey permeate (from MILK), MILK fat, inverted sugar syrup, emulsifiers (E 442, E 476), salt, raising agents (ammonium hydrogen carbonate, sodium hydrogen carbonate), flavourings.

## ALLERGENS

### Product Contains:

Celery/Celeriac	No	Mustard	No
Cereals Containing Gluten	Yes	Nuts (Tree)	May Contain
Barley	No	Almond nuts	No
Oats	No	Brazil nuts	No
Rye	No	Cashew nuts	No
Wheat (including Spelt and Khorasan)	Yes	Hazelnuts	May Contain
Crustacea	No	Macadamia (Queensland) nuts	No
Eggs	No	Pecan nuts	No
Fish	No	Pistachio nuts	No
Lupin	No	Walnuts	No
Milk	Yes	Peanuts	No
Molluscs	No	Sesame Seeds	No
		Soybeans	No
		Sulphur Dioxide and Sulphites	No

### Risk Source:

### Additional Allergen Information

MAY CONTAINS NUTS.

SUPPLEMENTARY  
INGREDIENT  
INFORMATION

<b>Palm Oil</b>	Yes
<b>Hydrogenated Vegetable Oil/Fat</b>	No
<b>GM Protein/DNA</b>	No

ADDITIVES

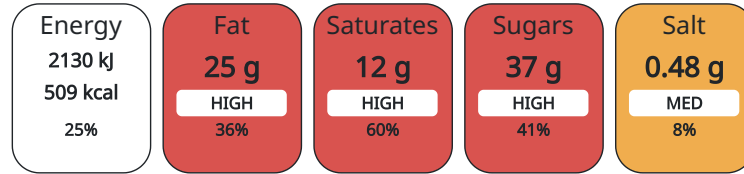
*Product Contains:*

DIET SUITABILITY

<b>Vegan Diet</b>	No	<b>Vegetarian Diet</b>	Suitable for
<b>Halal Diet</b>	No	<b>Kosher Diet</b>	No

NUTRITIONAL  
INFORMATION AS  
SOLD

Each 100g/ml portion contains:



of your reference intake.

Typical values per 100g/ml : Energy 509kcal / 2130kj

Nutrient	per 100g	RI per 100g	per 40g serving	RI per 40g serving
<b>Energy (kJ)</b>	2130 kJ	25%	852	10%
<b>Energy (kcal)</b>	509 kcal	25%	203.6	10%
<b>Fat</b>	25 g	36%	10 g	14%
<b>of which Saturates</b>	12 g	60%	4.8 g	24%
<b>Carbohydrate</b>	64 g	25%	25.6 g	10%
<b>of which Sugars</b>	37 g	41%	14.8 g	16%
<b>Fibre</b>	2.1 g		0.84 g	
<b>Protein</b>	6.4 g	13%	2.56 g	5%
<b>Salt</b>	0.48 g	8%	0.19 g	3%

<b>Serving Size</b>	40 g
<b>Serving Size Description</b>	40 g = 1 bag. Contains 1 portion per bag.
<b>Number of Servings</b>	1 Servings

HANDLING &  
STORAGE  
INFORMATION

**Directions For Use**

Ready To Eat

**Storage Instructions**

STORE IN A DRY PLACE. PROTECT FROM HEAT.

<b>Shelf Life from Time of Production</b>	275 Days
---	----------

ORIGIN

<b>Product Country of Origin</b>	Poland
<b>Origin of the Primary Ingredient</b>	Not Applicable

PRODUCT  
CHARACTERISTICS  
CONFIGURATION

<b>Standards Testing</b>	
<b>Case Configuration</b>	Inner Pack Configuration
<b>Total Quantity of Inner Components in Outer Case</b>	16 Units

PRODUCT WEIGHTS

Inner Component	
<b>Variable Weight Consumer Item</b>	No
<b>Inner Component Weight</b>	40 g
Outer Case	
<b>Outer Case Gross Weight</b>	0.75 kg
<b>Outer Case Net Weight</b>	0.64 kg

PRODUCT DIMENSIONS

Inner Component	
<b>Inner Component Depth</b>	22 mm
<b>Inner Component Width</b>	100 mm
<b>Inner Component Height</b>	80 mm
Outer Case	
<b>Outer Case Depth</b>	200 mm
<b>Outer Case Width</b>	110 mm
<b>Outer Case Height</b>	173 mm

PALLET INFORMATION

<b>Quantity of Cases Per Pallet Layer</b>	54 Cases	<b>Pallet Type</b>	Euro Pallet
<b>Quantity of Layers Per Pallet</b>	12 Layers	<b>Pallet Height</b>	1.55 MTR
<b>Quantity of Cases Per Pallet</b>	648 Cases	<b>Pallet Gross Weight</b>	471.01 kg

PACKAGING

Inner Component Packaging						
Type	Materials	Weight	Recycled Material %	Recyclable	Returnable	Composite
Bag	Plastic	13.6 g				
Outer Case Packaging						
Type	Materials	Weight	Recycled Material %	Recyclable	Returnable	Composite
Case	Paper/Cardboard	60 g				

OTHER INFORMATION CONTACT INFORMATION

**Address**

Mondelez UK Ltd  
 PO Box 12  
 Bournville Lane  
 B30 2LU  
 Bournville  
 Birmingham  
 England

thomas.brooks@mdlz.com  
 +44 1214 582 000

**Technical**

Tomas Sakalik  
 tomas.sakalik@mdlz.com  
 Publication Expert

The information on the [Erudus System](#) has been supplied by the manufacturers of the products and, whilst the owners of the Erudus System take steps to ensure the information is regularly updated, they give no warranty and no guarantee that the information is accurate. Product information and ingredients may change, please always read product labels carefully in addition to using the information provided by Erudus.

We do not accept liability for any inaccuracies or incorrect information contained on this site. Please visit <http://www.erudus.com/terms-and-conditions> for full terms and conditions.