

Changed Aug 12, 2024 15:41

Reviewed Aug 12, 2024 15:41

Erudus ID 1e55532ba92a4f72bb4778828f0f58de

Version 3.0

Status Published

12456

# Grace Sayaloe Strawberry SRP 12x500ml

Sayaloe Strawberry 12x

## PRODUCT DESCRIPTION

A fresh and thirst-quenching drink with pieces of Aloe Vera gel.

Please keep in dry and cool place. Once open must keep in 4 degree C fridge and consumed within 4 days.

Brand	<a href="#">Grace Foods UK Limited</a>
Manufacturer Product Code	431690
Product Type	Drink
Product Category	Tea & Coffee
Storage Type	Ambient
Erudus ID	1e55532ba92a4f72bb4778828f0f58de
Specification Type	Drinks

Inner Component GTIN	5035139217611
Outer Case GTIN	05035139377643



## INGREDIENTS

### Ingredient Declaration

Water, Aloe Vera (20%), Cane Sugar, Strawberry Flavour, Acidity Regulator E296, Stabilizer E327, Antioxidant E300, Trehalose, Stabilizer E418, Sweetener E955, Colours (Anthocyanin, Beta-Carotene).

## ALLERGENS

### Product Contains:

Celery/Celeriac	No	Mustard	No
Cereals Containing Gluten	No	Nuts (Tree)	No
Barley	No	Almond nuts	No
Oats	No	Brazil nuts	No
Rye	No	Cashew nuts	No
Wheat (including Spelt and Khorasan)	No	Hazelnuts	No
Crustacea	No	Macadamia (Queensland) nuts	No
Eggs	No	Pecan nuts	No
Fish	No	Pistachio nuts	No
Lupin	No	Walnuts	No
Milk	No	Peanuts	No
Molluscs	No	Sesame Seeds	No
		Soybeans	No
		Sulphur Dioxide and Sulphites	No

SUPPLEMENTARY  
INGREDIENT  
INFORMATION

Palm Oil	No
Hydrogenated Vegetable Oil/Fat	No
GM Protein/DNA	No

ADDITIVES

*Product Contains:*

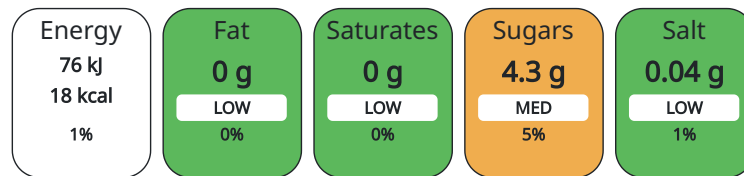
Artificial Antioxidants	Yes	Artificial Flavourings	No
Artificial Colours	No	Artificial Preservatives	No
Artificial Flavour Enhancers	No	Artificial Sweeteners	Yes

DIET SUITABILITY

Vegan Diet	Suitable for	Vegetarian Diet	Suitable for
Halal Diet	No	Kosher Diet	No

NUTRITIONAL  
INFORMATION AS  
SOLD

Each 100g/ml portion contains:



of your reference intake.

Typical values per 100g/ml : Energy 18kcal / 76kJ

Nutrient	per 100ml	RI per 100ml
Energy (kJ)	75.6 kJ	1%
Energy (kcal)	18 kcal	1%
Fat	0 g	
of which Saturates	0 g	
Carbohydrate	4.5 g	2%
of which Sugars	4.3 g	5%
Fibre	0.03 g	
Protein	0 g	
Salt	0.04 g	1%

VITAMINS AND  
MINERALS AS  
SOLD

Nutrient	per 100ml	RI per 100ml
Vitamin C	24 mg	30%

HANDLING &  
STORAGE  
INFORMATION

**Directions For Use**

Shake well before use.

**Storage Instructions**

Store at a cool, dark end dry place. Need refrigerated after opening.

Shelf Life from Time of Production	547 Days
------------------------------------	----------

ACCREDITATIONS/  
CERTIFICATIONS/  
ASSURANCE  
SCHEMES  
ORIGIN

**BRCGS Certified**

Product Country of Origin	Taiwan (Province of China)
---------------------------	----------------------------

**Origin of the Primary Ingredient**

PRODUCT  
CHARACTERISTICS

Standards Testing			
Do you undertake trend analysis of microbiological results?	No	Is shelf life testing undertaken?	No

Microbiological Standards

Organism	Description	Frequency	Target	Maximum	Sample (g or ml)
Coliforms (cfu/g or ml)	Negative	Every Batch	=0	0	1
E. Coli (cfu/g or ml)	Negative	Every Batch	=0	0	1
Moulds (cfu/g or ml)		Every Batch	<0	1	1
Aerobic Colony Count (ACC) (cfu/g or ml)	Total Plate count	Every Batch	<10	10	1

Analytical Standards

Test	Description	Frequency	Target	Range	Sample (g or ml)
Acidity (%)		Every Batch	=0.19	0.17 to 0.21	100
pH		Every Batch	=3.3	3 to 3.6	100

Physical Standards

Test	Description	Frequency	Target	Range	Sample (g or ml)
Weight (g)		Every Batch	=500	490 to 510	495

CONFIGURATION

Case Configuration Inner Pack Configuration

**Total Quantity of Inner Components in Outer Case** 12 Units

PRODUCT WEIGHTS

Inner Component

Outer Case

**Outer Case Gross Weight** 6.65 kg

**Outer Case Net Weight** 6 kg

PRODUCT DIMENSIONS

Inner Component

**Inner Component Depth** 60 mm

**Inner Component Width** 60 mm

**Inner Component Height** 207 mm

Outer Case

**Outer Case Depth** 0 mm

**Outer Case Width** 184 mm

**Outer Case Height** 218 mm

PALLET INFORMATION

**Quantity of Cases Per Pallet Layer** 25 Cases

**Pallet Type** UK Standard Pallet

**Quantity of Layers Per Pallet** 6 Layers

**Pallet Height** 1.43 MTR

**Quantity of Cases Per Pallet** 150 Cases

PACKAGING

Inner Component Packaging

Type	Materials	Weight	Recycled Material %	Recyclable	Returnable	Composite
Bottle	Plastic	30 g				

Outer Case Packaging

Type	Materials	Weight	Recycled Material %	Recyclable	Returnable	Composite
Case	Paper/Cardboard	42.8 g				

OTHER INFORMATION

CONTACT  
INFORMATION

**Address**

Grace Foods UK Limited  
Grace House  
Bessemer Road  
AL7 1HW  
Welwyn Garden City  
England

david.j.robinson@gkcoi.com  
01707 322332

**Technical**

David Robinson  
david.j.robinson@gkco.com  
01707382930  
Quality Technologist

**Commercial**

Jim Tyler  
jim.tyler@gkco.com  
07594 520794  
Food Service Controller

**Complaints**

Kekee Triveda  
Kekee.Trivedi@gkco.com  
01707382953  
Quality Technologists - Complaints

The information on the [Erudus System](#) has been supplied by the manufacturers of the products and, whilst the owners of the Erudus System take steps to ensure the information is regularly updated, they give no warranty and no guarantee that the information is accurate. Product information and ingredients may change, please always read product labels carefully in addition to using the information provided by Erudus.

We do not accept liability for any inaccuracies or incorrect information contained on this site.  
Please visit <http://www.erudus.com/terms-and-conditions> for full terms and conditions.