

12460

# KIT KAT Chunky Milk Duo 24x64g

Kit Kat Chunky Milk Duo 64g 24x

## PRODUCT DESCRIPTION

Crispy wafer finger covered with thick milk chocolate (68%).

Brand	<a href="#">Nestle UK</a>
Manufacturer Product Code	12447938
Product Type	Food
Product Category	Confectionery
Storage Type	Ambient
Erudus ID	a8c95848fd2745ebaf287618d79a8294
Specification Type	Legacy

Inner Component GTIN	3800020418697
Outer Case GTIN	3800020448694



## INGREDIENTS

### Ingredient Declaration

Ingredients: Sugar, **WHEAT** flour, Skimmed **MILK** powder, Cocoa mass, Cocoa butter, Vegetable fats (Palm, Shea), Butterfat (from **MILK**), Emulsifier (Sunflower lecithin), Raising agent (Sodium bicarbonate).

## ALLERGENS

*Product Contains:*

<b>Celery/Celery</b>	No	<b>Mustard</b>	No
<b>Cereals Containing Gluten</b>	Yes	<b>Nuts (Tree)</b>	May Contain
<b>Barley</b>	No	<b>Almond nuts</b>	May Contain
<b>Oats</b>	No	<b>Brazil nuts</b>	May Contain
<b>Rye</b>	No	<b>Cashew nuts</b>	May Contain
<b>Wheat (including Spelt and Khorasan)</b>	Yes	<b>Hazelnuts</b>	May Contain
<b>Gluten content &lt;20ppm</b>	No	<b>Macadamia (Queensland) nuts</b>	May Contain
<b>Crustacea</b>	No	<b>Pecan nuts</b>	May Contain
<b>Eggs</b>	No	<b>Pistachio nuts</b>	May Contain
<b>Fish</b>	No	<b>Walnuts</b>	May Contain
<b>Lupin</b>	No	<b>Peanuts</b>	May Contain
<b>Milk</b>	Yes	<b>Sesame Seeds</b>	No
<b>Molluscs</b>	No	<b>Soybeans</b>	No
		<b>Sulphur Dioxide and Sulphites</b>	No

*Risk Source:*

### Additional Allergen Information

May contain PEANUTS and TREE NUTS.

SUPPLEMENTARY  
INGREDIENT  
INFORMATION

Palm Oil	Yes
Hydrogenated Vegetable Oil/Fat	No
GM Protein/DNA	No

ADDITIVES

*Product Contains:*

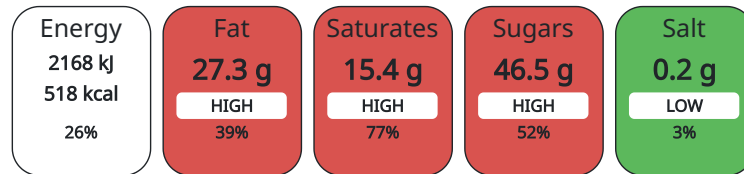
Artificial Colours	No	Artificial Flavourings	No
		Artificial Preservatives	No

DIET SUITABILITY

Suitable for Coeliacs	No	Halal Diet	No
Kosher Diet	No	Vegetarian Diet	No
Vegan Diet	No		

NUTRITIONAL  
INFORMATION

Each 100g/ml portion contains:



of your reference intake.

Typical values per 100g/ml : Energy 518kcal / 2168kJ

Nutrient	per 100g/ml	RI per 100g/ml
Energy (kJ)	2168 kJ	26%
Energy (kcal)	518 kcal	26%
Fat	27.3 g	39%
of which Saturates	15.4 g	77%
Carbohydrate	58.6 g	23%
of which Sugars	46.5 g	52%
Fibre	2.3 g	
Protein	8.2 g	16%
Salt	0.2 g	3%

HFSS (HIGH IN  
FAT, SALT AND  
SUGAR)

HFSS Status	Yes
-------------	-----

HANDLING &  
STORAGE  
INFORMATION

<b>Directions For Use</b>	
Ready to eat	
<b>Storage Instructions</b>	
Store cool and dry	
<b>Shelf Life from Time of Production</b>	330 Days

ACCREDITATIONS/  
CERTIFICATIONS/  
ASSURANCE  
SCHEMES  
ORIGIN

<b>FSSC 22000</b>	
<b>Product Country of Origin</b>	Bulgaria

PRODUCT  
CHARACTERISTICS

Standards Testing			
Do you undertake trend analysis of microbiological results?	No	Is shelf life testing undertaken?	No

CONFIGURATION

Case Configuration	Inner Pack Configuration
<b>Total Quantity of Inner Components in Outer Case</b>	24 Units

PRODUCT WEIGHTS

Inner Component	
<b>Variable Weight Consumer Item</b>	No
<b>Weight/Volume</b>	
64g net weight	
Outer Case	
<b>Outer Case Gross Weight</b>	1.65 kg
<b>Outer Case Net Weight</b>	1.5 kg

PRODUCT DIMENSIONS

Inner Component	
<b>Inner Component Depth</b>	30 mm
<b>Inner Component Width</b>	190 mm
<b>Inner Component Height</b>	18 mm
Outer Case	
<b>Outer Case Depth</b>	212 mm
<b>Outer Case Width</b>	208 mm
<b>Outer Case Height</b>	80 mm

PALLET INFORMATION

<b>Quantity of Cases Per Pallet Layer</b>	20 Cases	<b>Pallet Height</b>	1.12 MTR
<b>Quantity of Layers Per Pallet</b>	12 Layers	<b>Pallet Gross Weight</b>	425 kg
<b>Quantity of Cases Per Pallet</b>	240 Cases		

PACKAGING

Inner Component Packaging							
Type	Materials	Weight	Recycled Material %	Recyclable	Returnable	Composite	
Paper Foil	Plastic	1 g					
Paper Foil	Paper/Cardboard	118 g					
Outer Case Packaging							
Type	Materials	Weight	Recycled Material %	Recyclable	Returnable	Composite	
Case	Plastic	670 g					
Case	Paper/Cardboard	800 g					

OTHER INFORMATION CONTACT INFORMATION

**Address**

Nestle UK  
 Nestlé UK Ltd  
 PO Box 207  
 YO91 1WS  
 York  
 England

helen.brewer@uk.nestle.com  
 0800 00 00 30 (UK)

**Complaints**

consumer.services@uk.nestle.com  
 0800 00 00 30 (UK)

The information on the [Erudus System](#) has been supplied by the manufacturers of the products and, whilst the owners of the Erudus System take steps to ensure the information is regularly updated, they give no warranty and no guarantee that the information is accurate. Product information and ingredients may change, please always read product labels carefully in addition to using the information provided by Erudus.

We do not accept liability for any inaccuracies or incorrect information contained on this site. Please visit <http://www.erudus.com/terms-and-conditions> for full terms and conditions.