

SUPPLEMENTARY
INGREDIENT
INFORMATION

Palm Oil	No
Hydrogenated Vegetable Oil/Fat	No
GM Protein/DNA	No

ADDITIVES

Product Contains:

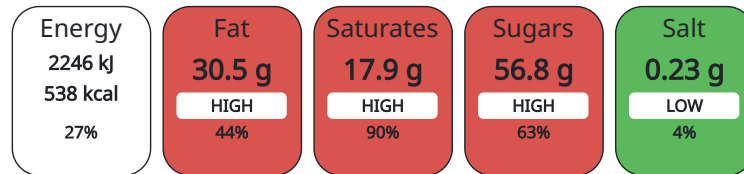
Artificial Colours	No	Artificial Flavourings	No
		Artificial Preservatives	No

DIET SUITABILITY

Suitable for Coeliacs	No	Halal Diet	No
Kosher Diet	No	Vegetarian Diet	Suitable for
Vegan Diet	No		

NUTRITIONAL
INFORMATION

Each 100g/ml portion contains:



of your reference intake.

Typical values per 100g/ml : Energy 538kcal / 2246kJ

Nutrient	per 100g/ml	RI per 100g/ml
Energy (kJ)	2246 kJ	27%
Energy (kcal)	538 kcal	27%
Fat	30.5 g	44%
of which Saturates	17.9 g	90%
Carbohydrate	57.8 g	22%
of which Sugars	56.8 g	63%
Fibre	1.9 g	
Protein	6.8 g	14%
Salt	0.23 g	4%

HFSS (HIGH IN
FAT, SALT AND
SUGAR)

HFSS Status	Yes
-------------	-----

HANDLING &
STORAGE
INFORMATION

Directions For Use	Ready to eat
Storage Instructions	Store cool and dry
Shelf Life from Time of Production	365 Days

ACCREDITATIONS/
CERTIFICATIONS/
ASSURANCE
SCHEMES
ORIGIN

FSSC 22000	Rainforest Alliance
Product Country of Origin	United Kingdom

PRODUCT
CHARACTERISTICS

Standards Testing			
Do you undertake trend analysis of microbiological results?	No	Is shelf life testing undertaken?	No

CONFIGURATION

Case Configuration	Inner Pack Configuration
Total Quantity of Inner Components in Outer Case	24 Units

PRODUCT WEIGHTS

Inner Component	
Variable Weight Consumer Item	No
Weight/Volume	
72g net weight	
Outer Case	
Outer Case Gross Weight	1.91 kg
Outer Case Net Weight	1.73 kg

PRODUCT DIMENSIONS

Inner Component	
Inner Component Depth	73 mm
Inner Component Width	155 mm
Inner Component Height	35 mm
Outer Case	
Outer Case Depth	231 mm
Outer Case Width	182 mm
Outer Case Height	78 mm

PALLET INFORMATION

Quantity of Cases Per Pallet Layer	25 Cases	Pallet Height	1.33 MTR
Quantity of Layers Per Pallet	15 Layers	Pallet Gross Weight	747 kg
Quantity of Cases Per Pallet	375 Cases		

PACKAGING

Inner Component Packaging						
Type	Materials	Weight	Recycled Material %	Recyclable	Returnable	Composite
Foil	Plastic	1 g				
Outer Case Packaging						
Type	Materials	Weight	Recycled Material %	Recyclable	Returnable	Composite
Case	Plastic	2 g				
Case	Paper/Cardboard	159 g				

OTHER INFORMATION CONTACT INFORMATION

Address

Nestle UK
 Nestlé UK Ltd
 PO Box 207
 YO91 1WS
 York
 England

helen.brewer@uk.nestle.com
 0800 00 00 30 (UK)

Complaints

consumer.services@uk.nestle.com
 0800 00 00 30 (UK)

The information on the [Erudus System](#) has been supplied by the manufacturers of the products and, whilst the owners of the Erudus System take steps to ensure the information is regularly updated, they give no warranty and no guarantee that the information is accurate. Product information and ingredients may change, please always read product labels carefully in addition to using the information provided by Erudus.

We do not accept liability for any inaccuracies or incorrect information contained on this site. Please visit <http://www.erudus.com/terms-and-conditions> for full terms and conditions.