

Changed Jan 23, 2025 09:17

Reviewed Jan 23, 2025 09:17

Erudus ID 8bb86d76549c4f31bbf74c75dcfebf52

Version 1.0

Status Published

12478

# Rubicon Spring Still Vits Black Cherry Pomegranate (12x500ml)

Vits Black Cherry Pomegranate 12x500ml

## PRODUCT DESCRIPTION

Still Black Cherry and Pomegranate Flavoured Spring Water Drink with Fruit Juice, Vitamins and Sweetener

Brand	Rubicon Spring
Manufacturer	<a href="#">A.G. Barr P.L.C</a>
Manufacturer Product Code	3482400
Product Type	Drink
Product Category	Carbonated & Soft Drinks
Storage Type	Ambient
Erudus ID	8bb86d76549c4f31bbf74c75dcfebf52
Specification Type	Drinks



Inner Component GTIN 5000382123781

Outer Case GTIN 05000382123798



## INGREDIENTS

### Ingredient Declaration

Spring Water, Fruit Juices from Concentrate (Black Cherry 1.5%, Pomegranate 1.5%), Acid (Citric Acid), Natural Flavourings, Black Carrot Concentrate, Preservative (Sodium Benzoate), Vitamins (Niacin, B6, B12), Sweetener (Sucralose)

### Ingredient Statements

Vitamins B3 (Niacin), B6, B12 contribute to normal energy-yielding metabolism, normal function of the immune system and the reduction of tiredness and fatigue. A varied and balanced diet and a healthy lifestyle are recommended.

ALLERGENS

Product Contains:

Celery/Celery	No	Mustard	No
Cereals Containing Gluten	No	Nuts (Tree)	No
Barley	No	Almond nuts	No
Oats	No	Brazil nuts	No
Rye	No	Cashew nuts	No
Wheat (including Spelt and Khorasan)	No	Hazelnuts	No
Crustacea	No	Macadamia (Queensland) nuts	No
Eggs	No	Pecan nuts	No
Fish	No	Pistachio nuts	No
Lupin	No	Walnuts	No
Milk	No	Peanuts	No
Molluscs	No	Sesame Seeds	No
		Soybeans	No
		Sulphur Dioxide and Sulphites	No

SUPPLEMENTARY INGREDIENT INFORMATION

Palm Oil	No
Hydrogenated Vegetable Oil/Fat	No
GM Protein/DNA	No

ADDITIVES

Product Contains:

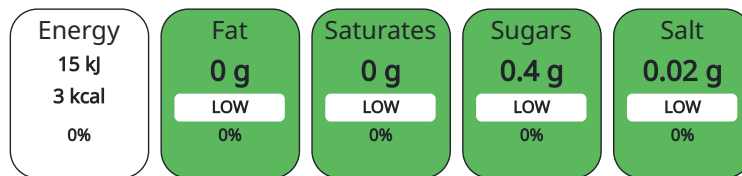
Artificial Antioxidants	No	Artificial Flavourings	No
Artificial Colours	No	Artificial Preservatives	Yes
Artificial Flavour Enhancers	No	Artificial Sweeteners	Yes

DIET SUITABILITY

Vegan Diet	Suitable for	Vegetarian Diet	Suitable for
Halal Diet	Suitable for	Kosher Diet	No

NUTRITIONAL INFORMATION AS SOLD

Each 100g/ml portion contains:



of your reference intake.

Typical values per 100g/ml : Energy 3kcal / 15kJ

Nutrient	per 100ml	RI per 100ml	per 500ml serving	RI per 500ml serving
Energy (kJ)	15 kJ	0%	75	1%
Energy (kcal)	3 kcal	0%	15	1%
Fat	0 g		0 g	
of which Saturates	0 g		0 g	
Carbohydrate	0.6 g	0%	3 g	1%
of which Sugars	0.4 g	0%	2 g	2%
Protein	0 g		0 g	
Salt	0.02 g	0%	0.1 g	2%
Serving Size		500 ml		

VITAMINS AND MINERALS AS SOLD

Nutrient	per 100ml	RI per 100ml	per 500ml serving	RI per 500ml serving
Niacin (B3)	3.2 mg	20%	16 mg	100%
Vitamin B6	0.28 mg	20%	1.4 mg	100%
Vitamin B12	0.5 µg	20%	2.5 µg	100%

HFSS (HIGH IN FAT, SALT AND SUGAR)  
HANDLING & STORAGE INFORMATION

<b>HFSS Status</b>	No
<b>Directions For Use</b>	
Once opened, keep refrigerated and consume within 3 days.	
<b>Storage Instructions</b>	
Store in a cool, dry place away from direct sunlight	
<b>Shelf Life from Time of Production</b>	270 Days

ACCREDITATIONS/ CERTIFICATIONS/ ASSURANCE SCHEMES ORIGIN

<b>BRCGS Certified</b>	<b>ISO 14001 (Environmental Management)</b>
<b>Product Country of Origin</b>	United Kingdom
<b>Origin of the Primary Ingredient</b>	

PRODUCT CHARACTERISTICS

Standards Testing	
<b>Do you undertake trend analysis of microbiological results?</b>	Yes
<b>Is shelf life testing undertaken?</b>	Yes

CONFIGURATION

Case Configuration	Inner Pack Configuration
<b>Total Quantity of Inner Components in Outer Case</b>	12 Units
<b>Is the Outer Case Splittable?</b>	Yes

PRODUCT WEIGHTS

Inner Component	
<b>Inner Component Volume</b>	500 ml
<b>e mark</b>	Yes
Outer Case	
<b>Outer Case Gross Weight</b>	6.3 kg
<b>Outer Case Net Weight</b>	6.24 kg

PRODUCT DIMENSIONS

Inner Component	
<b>Inner Component Depth</b>	65.5 mm
<b>Inner Component Width</b>	65.5 mm
<b>Inner Component Height</b>	201 mm
Outer Case	
<b>Outer Case Depth</b>	262 mm
<b>Outer Case Width</b>	197 mm
<b>Outer Case Height</b>	202 mm

PALLET INFORMATION

<b>Quantity of Cases Per Pallet Layer</b>	22 Cases	<b>Pallet Type</b>	UK Standard Pallet
<b>Quantity of Layers Per Pallet</b>	7 Layers	<b>Pallet Height</b>	1.56 MTR
<b>Quantity of Cases Per Pallet</b>	154 Cases	<b>Pallet Gross Weight</b>	1005 kg

PACKAGING

Inner Component Packaging						
Type	Materials	Weight	Recycled Material %	Recyclable	Returnable	Composite
Bottle	Plastic	22.76 g				

#### Outer Case Packaging

Type	Materials	Weight	Recycled Material %	Recyclable	Returnable	Composite
Case	Plastic	16.65 g	100.00 %			
Case	Paper/Cardboard	0.61 g				

#### Transport Packaging

Type	Materials	Weight	Recycled Material %	Recyclable	Returnable	Composite
Other	Plastic	187 g			Yes	
Other	Paper/Cardboard	1739.14 g			Yes	

#### OTHER INFORMATION CONTACT INFORMATION

**Commodity Code** 22021000

#### Address

A.G. Barr P.L.C  
Westfield House  
4 Mollins Road  
G68 9HD  
Cumbernauld  
Scotland

gracemejabi@agbarr.co.uk  
01236 852400

The information on the [Erudus System](#) has been supplied by the manufacturers of the products and, whilst the owners of the Erudus System take steps to ensure the information is regularly updated, they give no warranty and no guarantee that the information is accurate. Product information and ingredients may change, please always read product labels carefully in addition to using the information provided by Erudus.

We do not accept liability for any inaccuracies or incorrect information contained on this site.  
Please visit <http://www.erudus.com/terms-and-conditions> for full terms and conditions.