

Changed Apr 02, 2025 00:00

Reviewed Apr 01, 2025 13:59

Erudus ID a72e15608197432ea67981ffdcb298e7

Version 2.0

Status Published

12486

Pepsi Cream Soda Zero Sugar CANS 24 X 330ml

Carbonated Low Calorie Vanilla Cola Flavoured Soft Drink With Sweeteners 24x330.59g

PRODUCT DESCRIPTION

Suitable for vegetarians and vegans

Brand	Britvic Soft Drinks Limited
Manufacturer Product Code	290323
Manufacturer Version	v1
Number	
Effective Date	Apr 1, 2025
Product Type	Drink
Product Category	Carbonated & Soft Drinks
Storage Type	Ambient
Erudus ID	a72e15608197432ea67981ffdcb298e7
Specification Type	Drinks

Inner Component GTIN	4062139018352
Outer Case GTIN	04062139018345



INGREDIENTS

Ingredient Declaration

Carbonated Water, Colour (E150d), Flavourings (including Caffeine), Acid (Phosphoric Acid), Sweeteners (Aspartame, Acesulfame K, Sucralose), Thickener (Pectin), Acidity Regulator (Sodium Citrate), Preservative (Potassium Sorbate). **Contains a Source of Phenylalanine.**

ALLERGENS

Product Contains:

Celery/Celeriac	No	Mustard	No
Cereals Containing Gluten	No	Nuts (Tree)	No
Barley	No	Almond nuts	No
Oats	No	Brazil nuts	No
Rye	No	Cashew nuts	No
Wheat (including Spelt and Khorasan)	No	Hazelnuts	No
Crustacea	No	Macadamia (Queensland) nuts	No
Eggs	No	Pecan nuts	No
Fish	No	Pistachio nuts	No
Lupin	No	Walnuts	No
Milk	No	Peanuts	No
Molluscs	No	Sesame Seeds	No
		Soybeans	No
		Sulphur Dioxide and Sulphites	No

SUPPLEMENTARY
INGREDIENT
INFORMATION

Palm Oil	No	CBD Concentration per Unit	0 mg
Hydrogenated Vegetable Oil/Fat	No		
GM Protein/DNA	No		

ADDITIVES

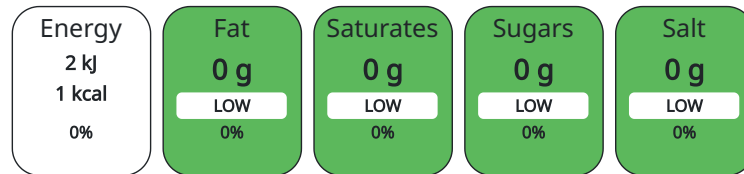
<i>Product Contains:</i>			
Artificial Antioxidants	No	Artificial Flavourings	Yes
Artificial Colours	Yes	Artificial Preservatives	Yes
Artificial Flavour Enhancers	No	Artificial Sweeteners	Yes

DIET SUITABILITY

Vegan Diet	Suitable for	Vegetarian Diet	Suitable for
Halal Diet	No	Kosher Diet	No

NUTRITIONAL
INFORMATION AS
SOLD

Each 100g/ml portion contains:



of your reference intake.

Typical values per 100g/ml : Energy 1kcal / 2kJ

Nutrient	per 100ml	RI per 100ml
Energy (kJ)	2 kJ	0%
Energy (kcal)	0.5 kcal	0%
Fat	0 g	
of which Saturates	0 g	
of which Mono-unsaturates	0 g	
of which Polyunsaturates	0 g	
Carbohydrate	0 g	
of which Sugars	0 g	
Protein	0 g	
Salt	0 g	
Sodium	0 mg	

NUTRITIONAL
INFORMATION AS
PREPARED

Nutrient	per 100g/ml prepared	RI per 100g/ml prepared
Energy (kcal)		

HFSS (HIGH IN
FAT, SALT AND
SUGAR)

HFSS Status	No
HFSS Score	0

HANDLING &
STORAGE
INFORMATION

Directions For Use

Ready to drink

Storage Instructions

Store in a cool and dry place

Shelf Life from Time of Production	240 Days
Shelf Life From Opening	0 Days

ORIGIN

Product Country of Origin	United Kingdom
Origin of the Primary Ingredient	United Kingdom

PRODUCT CHARACTERISTICS CONFIGURATION

Standards Testing

Case Configuration

Variable Inner Components in Outer Case	No
Total Quantity of Inner Components in Outer Case	24 Units
Is the Outer Case Splittable?	Yes

Inner Pack Configuration

Count per Inner Component	24
----------------------------------	----

PRODUCT WEIGHTS

Inner Component

Inner Component Weight	330.59 g
Inner Component Volume	330 ml

Outer Case

Outer Case Gross Weight	8.35 kg
Outer Case Net Weight	8.05 kg

PRODUCT DIMENSIONS

Inner Component

Inner Component Depth	66.3 mm
Inner Component Width	66.3 mm
Inner Component Height	118 mm
Inner Component Diameter	66 mm

Outer Case

Outer Case Depth	402 mm
Outer Case Width	268 mm
Outer Case Height	118 mm

PALLET INFORMATION

Quantity of Cases Per Pallet Layer	10 Cases
Quantity of Layers Per Pallet	12 Layers
Quantity of Cases Per Pallet	120 Cases

Pallet Type	UK Standard Pallet
Pallet Height	1.58 MTR
Pallet Gross Weight	1041 kg

SAFETY & WARNINGS

Product Health Warning

Contains caffeine

OTHER INFORMATION CONTACT INFORMATION

Address

Britvic Soft Drinks Limited
 Breakspear Park
 Breakspear Way
 HP2 4TZ
 Hemel Hempstead
 Hertfordshire
 United Kingdom

Graham.Townes@britvic.com

Technical

Nikki Burton
 TechnicalInformationRequests@britvic.com
 +44 (0) 7736747481
 Technical Specifications Manager

The information on the [Erudus System](#) has been supplied by the manufacturers of the products and, whilst the owners of the Erudus System take steps to ensure the information is regularly updated, they give no warranty and no guarantee that the information is accurate. Product information and ingredients may change, please always read product labels carefully in addition to using the information provided by Erudus.

We do not accept liability for any inaccuracies or incorrect information contained on this site. Please visit <http://www.erudus.com/terms-and-conditions> for full terms and conditions.