

Changed Mar 28, 2025 10:08

Reviewed Mar 28, 2025 10:08

Erudus ID e029bbe0877043eca72553cea587761e

Version 2.0

Status Published

12488

Munchies Milk Chocolate & Caramel Sharing Bag 8x104g

Milk Chocolates With Soft Caramel (30%) And A Crisp Biscuit Centre (5%) 8x104g

PRODUCT DESCRIPTION

Milk chocolates with soft caramel (30%) and crisp biscuit centre (5%). Milk chocolate contains milk solids 14% minimum and vegetable fats in addition to cocoa butter.

Brand	Nestle UK
Manufacturer Product Code	12465769
Product Type	Food
Product Category	Confectionery
Storage Type	Ambient
Erudus ID	e029bbe0877043eca72553cea587761e
Specification Type	Generic

Inner Component GTIN	7613036241755
Outer Case GTIN	07613036241755



INGREDIENTS

Ingredient Declaration

Sugar, Glucose Syrup, Cocoa Butter, Vegetable Fats (Palm, Palm Kernel, Shea/ Illipe/ Mango Kernel/ Kokum Gurgi/ Sal), Invert Sugar Syrup, MILK Powders (Whole and Skimmed), Sweetened Condensed Skimmed MILK (MILK, Sugar), Cocoa Mass, Lactose and Proteins from Whey (from MILK), Whey Powder (from MILK), WHEAT Flour (contains Calcium, Iron, Thiamin and Niacin), Butterfat (from MILK), Emulsifier (Lecithins), BARLEY Malt Extract, Raising Agents (Sodium Bicarbonate, Ammonium Bicarbonate), Salt

ALLERGENS

Product Contains:

Celery/Celeryac	No	Mustard	No
Cereals Containing Gluten	Yes	Nuts (Tree)	No
Barley	Yes	Almond nuts	No
Oats	No	Brazil nuts	No
Rye	No	Cashew nuts	No
Wheat (including Spelt and Khorasan)	Yes	Hazelnuts	No
Crustacea	No	Macadamia (Queensland) nuts	No
Eggs	No	Pecan nuts	No
Fish	No	Pistachio nuts	No
Lupin	No	Walnuts	No
Milk	Yes	Peanuts	No
Molluscs	No	Sesame Seeds	No
		Soybeans	No
		Sulphur Dioxide and Sulphites	No

Additional Allergen Information

Important: Young children (less than 4 years) have limited chewing ability and could choke on small sweets.

SUPPLEMENTARY INGREDIENT INFORMATION

Palm Oil	Yes
Hydrogenated Vegetable Oil/Fat	No
GM Protein/DNA	No

ADDITIVES

Product Contains:

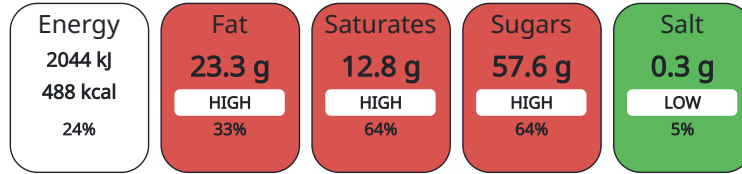
Artificial Colours	No	Artificial Flavourings	No
		Artificial Preservatives	No

DIET SUITABILITY

Vegan Diet	No	Vegetarian Diet	Suitable for
Halal Diet	No	Kosher Diet	No

NUTRITIONAL INFORMATION AS SOLD

Each 100g/ml portion contains:



of your reference intake.

Typical values per 100g/ml : Energy 488kcal / 2044kj

Nutrient	per 100g	RI per 100g
Energy (kj)	2044 kj	24%
Energy (kcal)	488 kcal	24%
Fat	23.3 g	33%
of which Saturates	12.8 g	64%
Carbohydrate	64.9 g	25%
of which Sugars	57.6 g	64%
Fibre	1.1 g	
Protein	4.1 g	8%
Salt	0.3 g	5%

HANDLING & STORAGE INFORMATION

Directions For Use

Ready to eat

Storage Instructions

Store cool and dry

Shelf Life from Time of Production 240 Days

ACCREDITATIONS/ CERTIFICATIONS/ ASSURANCE SCHEMES ORIGIN

FSSC 22000 Rainforest Alliance

Product Country of Origin United Kingdom

Origin of the Primary Ingredient United Kingdom

PRODUCT CHARACTERISTICS

Standards Testing

Do you undertake trend analysis of microbiological results?	No	Is shelf life testing undertaken?	No
---	----	-----------------------------------	----

CONFIGURATION	Case Configuration			Inner Pack Configuration			
	Total Quantity of Inner Components in Outer Case	8 Units					
	Is the Outer Case Splittable?	No					
PRODUCT WEIGHTS	Inner Component						
	Variable Weight Consumer Item	No					
	Inner Component Weight	104 g					
	Outer Case						
	Outer Case Gross Weight	0.98 kg					
	Outer Case Net Weight	0.83 kg					
PRODUCT DIMENSIONS	Inner Component						
	Inner Component Depth	45 mm					
	Inner Component Width	120 mm					
	Inner Component Height	160 mm					
	Outer Case						
	Outer Case Depth	285 mm					
	Outer Case Width	119 mm					
	Outer Case Height	168 mm					
PALLET INFORMATION	Quantity of Cases Per Pallet Layer	34 Cases		Pallet Height	1.34 MTR		
	Quantity of Layers Per Pallet	7 Layers		Pallet Gross Weight	264 kg		
	Quantity of Cases Per Pallet	238 Cases					
PACKAGING	Inner Component Packaging						
	Type	Materials	Weight	Recycled Material %	Recyclable	Returnable	Composite
	Pack	Plastic	4.5 g				
	Outer Case Packaging						
	Type	Materials	Weight	Recycled Material %	Recyclable	Returnable	Composite
	Case	Paper/Cardboard	145 g				
	MARKETING INFORMATION						
	Marketing Description						
	Creamy milk chocolate cubes encasing a soft caramel & crunchy biscuit centre No artificial colours, flavours & preservatives						
	Perfect for sharing with family and friends. Rainforest Alliance Certified cocoa						
OTHER INFORMATION CONTACT INFORMATION	Address			Complaints			
	Nestle UK			consumer.services@uk.nestle.com			
	Nestlé UK Ltd			0800 00 00 30 (UK)			
	PO Box 207						
	YO91 1WS						
	York England						
helen.brewer@uk.nestle.com							
0800 00 00 30 (UK)							

The information on the [Erudus System](#) has been supplied by the manufacturers of the products and, whilst the owners of the Erudus System take steps to ensure the information is regularly updated, they give no warranty and no guarantee that the information is accurate. Product information and ingredients may change, please always read product labels carefully in addition to using the information provided by Erudus.

We do not accept liability for any inaccuracies or incorrect information contained on this site.
Please visit <http://www.erudus.com/terms-and-conditions> for full terms and conditions.