

Changed Dec 13, 2024 15:56

Reviewed Dec 13, 2024 15:56

Erudus ID 915bcfe0f80d45cdaf2b533ad8f493e2

Version 1.0

Status Published

12492

PEPSI CREAM SODA 500ML PET X12

Carbonated Low Calorie Vanilla Cola Flavoured Soft Drink With Sweeteners 12x

PRODUCT DESCRIPTION

Enjoy the great taste of Pepsi Cream Soda with zero sugar, zero carbs and only 0.5 calories per bottle. A bold and refreshing fizzy drink suitable for vegans and vegetarians. Best served chilled 0.5 kcals per bottle Zero Sugar Zero Carbs Perfect choice as a mixer in cocktails and mocktails

Brand	Britvic Soft Drinks Limited
Manufacturer Product Code	290324
Manufacturer Version	v1
Number	
Effective Date	Dec 13, 2024
Product Type	Drink
Product Category	Carbonated & Soft Drinks
Storage Type	Ambient
Erudus ID	915bcfe0f80d45cdaf2b533ad8f493e2
Specification Type	Drinks

Inner Component GTIN	4062139018383
Outer Case GTIN	04062139018376



INGREDIENTS

Ingredient Declaration

Carbonated Water, Colour (E150d), Flavourings (including Caffeine), Acid (Phosphoric Acid), Sweeteners (Aspartame, Acesulfame K, Sucralose), Thickener (Pectin), Acidity Regulator (Sodium Citrate), Preservative (Potassium Sorbate). Contains a Source of Phenylalanine.

ALLERGENS

Product Contains:

Celery/Celery	No	Mustard	No
Cereals Containing Gluten	No	Nuts (Tree)	No
Barley	No	Almond nuts	No
Oats	No	Brazil nuts	No
Rye	No	Cashew nuts	No
Wheat (including Spelt and Khorasan)	No	Hazelnuts	No
Crustacea	No	Macadamia (Queensland) nuts	No
Eggs	No	Pecan nuts	No
Fish	No	Pistachio nuts	No
Lupin	No	Walnuts	No
Milk	No	Peanuts	No
Molluscs	No	Sesame Seeds	No
		Soybeans	No
		Sulphur Dioxide and Sulphites	No

SUPPLEMENTARY INGREDIENT INFORMATION

Palm Oil	No	CBD Concentration per Unit	0 mg
Hydrogenated Vegetable Oil/Fat	No		
GM Protein/DNA	No		

ADDITIVES

Product Contains:

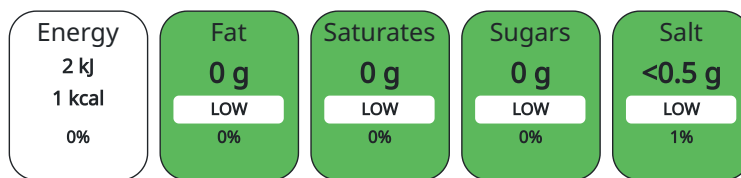
Artificial Antioxidants	No	Artificial Flavourings	Yes
Artificial Colours	Yes	Artificial Preservatives	No
Artificial Flavour Enhancers	No	Artificial Sweeteners	Yes

DIET SUITABILITY

Vegan Diet	Suitable for	Vegetarian Diet	Suitable for
Halal Diet	No	Kosher Diet	No

NUTRITIONAL INFORMATION AS SOLD

Each 100g/ml portion contains:



of your reference intake.

Typical values per 100g/ml : Energy 1kcal / 2kJ

Nutrient	per 100ml	RI per 100ml
Energy (kJ)	2 kJ	0%
Energy (kcal)	0.5 kcal	0%
Fat	0 g	
of which Saturates	0 g	
of which Mono-unsaturates	0 g	
of which Polyunsaturates	0 g	
Carbohydrate	0 g	
of which Sugars	0 g	
Protein	0 g	
Salt	0.03 g	1%

HFSS (HIGH IN FAT, SALT AND SUGAR)	HFSS Status	No	
	HFSS Score	0	
HANDLING & STORAGE INFORMATION	Directions For Use	Ready to drink	
	Storage Instructions	Store in a cool and dry place	
	Storage Instructions After Opening	Store in a cool and dry place	
	Shelf Life from Time of Production	180 Days	
	Shelf Life From Opening	3 Days	
ORIGIN	Product Country of Origin	United Kingdom	
	Origin of the Primary Ingredient		
PRODUCT CHARACTERISTICS CONFIGURATION	Standards Testing		
	Case Configuration		Inner Pack Configuration
	Variable Inner Components in Outer Case	No	
	Total Quantity of Inner Components in Outer Case	12 Units	
	Is the Outer Case Splittable?	Yes	
PRODUCT WEIGHTS	Inner Component		
	Outer Case		
	Outer Case Gross Weight	6.3 kg	
	Outer Case Net Weight	6.01 kg	
PRODUCT DIMENSIONS	Inner Component		
	Inner Component Depth	65.5 mm	
	Inner Component Width	65.5 mm	
	Inner Component Height	221 mm	
	Inner Component Diameter	66 mm	
	Outer Case		
	Outer Case Depth	262 mm	
	Outer Case Width	197 mm	
	Outer Case Height	222 mm	
	PALLET INFORMATION	Quantity of Cases Per Pallet Layer	22 Cases
Quantity of Layers Per Pallet		6 Layers	Pallet Height 1.58 MTR
Quantity of Cases Per Pallet		132 Cases	Pallet Gross Weight 861 kg
MARKETING INFORMATION	Marketing Description	<p>MAXIMUM MANGO, NO SUGAR a bold fizzy drink with a cream soda twist; Zero Sugar, Zero Carbs LOW CALORIE carbonated cola that has just 0.5 calories in each bottle SUITABLE FOR VEGANS, VEGETARIANS a sparkling low calorie soft drink BEST SERVED chilled or over ice. Perfect for parties, meals, and celebrations big and small REMEMBER TO RECYCLE - Our cans and bottles can be recycled. Packaging may vary.</p>	
SAFETY & WARNINGS	Product Health Warning	Contains caffeine	

CONTACT
INFORMATION

Address

Britvic Soft Drinks Limited
Breakspear Park
Breakspear Way
HP2 4TZ
Hemel Hempstead
Hertfordshire
United Kingdom

Graham.Townes@britvic.com

Technical

Nikki Burton
UKSMTechnicalInformationRequests@CarlsbergBritvic.co.uk
+44 (0) 7736747481
Technical Specifications Manager

The information on the [Erudus System](#) has been supplied by the manufacturers of the products and, whilst the owners of the Erudus System take steps to ensure the information is regularly updated, they give no warranty and no guarantee that the information is accurate. Product information and ingredients may change, please always read product labels carefully in addition to using the information provided by Erudus.

We do not accept liability for any inaccuracies or incorrect information contained on this site.
Please visit <http://www.erudus.com/terms-and-conditions> for full terms and conditions.