

Changed Sep 05, 2024 10:51

Reviewed Sep 05, 2024 10:51

Erudus ID c31bc8025e2644c6a01ec1361fd5824a

Version 1.0

Status Published

12497

# KETTLE® Chips Sweet Chilli & Sour Cream 40gx54

Sweet Chilli & Sour Cream 40gx54 54x40g

## PRODUCT DESCRIPTION

Hand Cooked Potato Chips with Sweet Chilli and Sour Cream Seasoning.

|                           |   |
|---------------------------|---|
| Brand                     | <a href="#">Kettle Foods Ltd (Valeo Snackfoods)</a> |
| Manufacturer Product Code | FG001878  |
| Product Type              | Food  |
| Product Category          | Crisps & Snacks                                     |
| Storage Type              | Ambient   |
| Erudus ID                 | c31bc8025e2644c6a01ec1361fd5824a                    |
| Specification Type        | Generic   |

Inner Component GTIN 5017764112691

Outer Case GTIN 05017764113186



## INGREDIENTS

### Ingredient Declaration

Select Potatoes, Vegetable Oils (Rapeseed Oil, Sunflower Oil)\*, Sweet Chilli and Sour Cream Seasoning (Sugar, Dried Sour Cream (Milk), Dried Skimmed Milk, Dried Yoghurt (Milk), Sea Salt, Dried Onion, Yeast Extract, Dried Chilli, Dried Red Pepper, Ground Paprika, Acidity Regulator: Citric Acid; Natural Flavouring, Dried Garlic, Dried Lemon).

### Ingredient Statements

\*In varying proportions. Note: product may be fried in either of the oils listed or a blend may be used dependant on availability

## ALLERGENS

### Product Contains:

|                                      |     |                               |    |
|--------------------------------------|-----|-------------------------------|----|
| Celery/Celeriac                      | No  | Mustard                       | No |
| Cereals Containing Gluten            | No  | Nuts (Tree)                   | No |
| Barley                               | No  | Almond nuts                   | No |
| Oats                                 | No  | Brazil nuts                   | No |
| Rye                                  | No  | Cashew nuts                   | No |
| Wheat (including Spelt and Khorasan) | No  | Hazelnuts                     | No |
| Crustacea                            | No  | Macadamia (Queensland) nuts   | No |
| Eggs                                 | No  | Pecan nuts                    | No |
| Fish                                 | No  | Pistachio nuts                | No |
| Lupin                                | No  | Walnuts                       | No |
| Milk                                 | Yes | Peanuts                       | No |
| Molluscs                             | No  | Sesame Seeds                  | No |
|                                      |     | Soybeans                      | No |
|                                      |     | Sulphur Dioxide and Sulphites | No |

### Allergen Statement On Pack

For allergens see ingredients in bold.

#### FREE FROM CLAIMS

**Gluten-Free** Yes

#### SUPPLEMENTARY INGREDIENT INFORMATION

**Palm Oil** No  
**Hydrogenated Vegetable Oil/Fat** No  
**GM Protein/DNA** No

#### ADDITIVES

*Product Contains:*

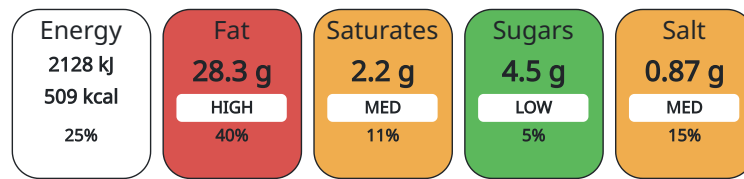
|                                     |    |                                 |    |
|-------------------------------------|----|---------------------------------|----|
| <b>Artificial Antioxidants</b>      | No | <b>Artificial Flavourings</b>   | No |
| <b>Artificial Colours</b>           | No | <b>Artificial Preservatives</b> | No |
| <b>Artificial Flavour Enhancers</b> | No | <b>Artificial Sweeteners</b>    | No |

#### DIET SUITABILITY

|                   |    |                        |              |
|-------------------|----|------------------------|--------------|
| <b>Vegan Diet</b> | No | <b>Vegetarian Diet</b> | Suitable for |
| <b>Halal Diet</b> | No | <b>Kosher Diet</b>     | No           |

#### NUTRITIONAL INFORMATION AS SOLD

Each 100g/ml portion contains:



of your reference intake.

Typical values per 100g/ml : Energy 509kcal / 2128kJ

| Nutrient             | per 100g | RI per 100g | per 40g serving | RI per 40g serving |
|----------------------|----------|-------------|-----------------|--------------------|
| <b>Energy (kJ)</b>   | 2128 kJ  | 25%         | 851.2           | 10%                |
| <b>Energy (kcal)</b> | 509 kcal | 25%         | 203.6           | 10%                |
| <b>Fat</b>           | 28.3 g   | 40%         | 11.32 g         | 16%                |
| of which Saturates   | 2.2 g    | 11%         | 0.88 g          | 4%                 |
| <b>Carbohydrate</b>  | 53.9 g   | 21%         | 21.56 g         | 8%                 |
| of which Sugars      | 4.5 g    | 5%          | 1.8 g           | 2%                 |
| <b>Fibre</b>         | 4.7 g    |             | 1.88 g          |                    |
| <b>Protein</b>       | 7.5 g    | 15%         | 3 g             | 6%                 |
| <b>Salt</b>          | 0.87 g   | 15%         | 0.35 g          | 6%                 |
| <b>Sodium</b>        | 348 mg   |             | 139.2 mg        |                    |

**Serving Size** 40 g  
**Serving Size Description** per 40g pack  
**Number of Servings** 1 Servings

**Source of Nutritional Information** Manufacturers analysis

#### SUPPLEMENTARY NUTRITIONAL INFORMATION

**Fibre Type** Fibre AOAC

#### HFSS (HIGH IN FAT, SALT AND SUGAR)

**HFSS Status** No  
**HFSS Score** 7

HANDLING & STORAGE INFORMATION

Directions For Use

n/a

Storage Instructions

Store in a cool, dry place away from bright light.

Storage Instructions After Opening

Store in an airtight container

Shelf Life from Time of Production 168 Days

Shelf Life From Opening 1 Days

ACCREDITATIONS/ CERTIFICATIONS/ ASSURANCE SCHEMES ORIGIN

BRCGS Certified

BRCGS Food Safety

Product Country of Origin United Kingdom

Origin of the Primary Ingredient

PRODUCT CHARACTERISTICS

Standards Testing

Do you undertake trend analysis of microbiological results? Yes

Is shelf life testing undertaken? Yes

Commercially Sterile No

CONFIGURATION

Case Configuration

Inner Pack Configuration

Total Quantity of Inner Components in Outer Case 54 Units

Count per Inner Component 1

PRODUCT WEIGHTS

Inner Component

Variable Weight Consumer Item No

Inner Component Weight 40 g

e mark Yes

Outer Case

Outer Case Gross Weight 2.66 kg

Outer Case Net Weight 2.16 kg

PRODUCT DIMENSIONS

Inner Component

Inner Component Depth 30 mm

Inner Component Width 135 mm

Inner Component Height 180 mm

Outer Case

Outer Case Depth 330 mm

Outer Case Width 499 mm

Outer Case Height 291 mm

PALLET INFORMATION

Quantity of Cases Per Pallet Layer 7 Cases

Pallet Type UK Standard Pallet

Quantity of Layers Per Pallet 6 Layers

Pallet Height 1.58 MTR

Quantity of Cases Per Pallet 42 Cases

PACKAGING

Inner Component Packaging

| Type     | Materials | Weight | Recycled Material % | Recyclable | Returnable | Composite |
|----------|-----------|--------|---------------------|------------|------------|-----------|
| Overwrap | Plastic   | 2.5 g  |                     |            |            |           |

Outer Case Packaging

| Type | Materials       | Weight | Recycled Material % | Recyclable | Returnable | Composite |
|------|-----------------|--------|---------------------|------------|------------|-----------|
| Case | Paper/Cardboard | 216 g  |                     |            |            |           |

Transport Packaging

| Type  | Materials | Weight  | Recycled Material % | Recyclable | Returnable | Composite |
|-------|-----------|---------|---------------------|------------|------------|-----------|
| Other | Wood      | 20000 g |                     |            | Yes        |           |

OTHER  
INFORMATION  
CONTACT  
INFORMATION

**Address**

Kettle Foods Ltd (Valeo Snackfoods)  
Barnard Road,  
Bowthorpe  
NR5 9JP  
Norwich  
Norfolk  
United Kingdom

Sharon.laws@valeosnackfoods.com  
+44 1 491 827 400

**Technical**

Rebecca Cave  
rebecca.cave@valeofoods.co.uk  
07359773190  
Technical Manager

**Commercial**

Mike Burnett  
mike.burnett@valeofoods.co.uk  
07917 797484  
National Account Manager

**Complaints**

Rebecca Cave  
rebecca.cave@valeofoods.co.uk  
07359773190  
Technical Manager

The information on the [Erudus System](#) has been supplied by the manufacturers of the products and, whilst the owners of the Erudus System take steps to ensure the information is regularly updated, they give no warranty and no guarantee that the information is accurate. Product information and ingredients may change, please always read product labels carefully in addition to using the information provided by Erudus.

We do not accept liability for any inaccuracies or incorrect information contained on this site.  
Please visit <http://www.erudus.com/terms-and-conditions> for full terms and conditions.